



PLEISTOCENE COALITION NEWS

VOLUME 4, ISSUE 3

MAY - JUNE 2012

Inside

PAGE 2

Calico, Pt.1

Fred E. Budinger

PAGE 4

Australian rock art Wanjina/Bradshaws

Vesna Tenodi

PAGE 7

Some thoughts on evolution

Rockey Whipkey

PAGE 10

Keeping an open mind

Helen Banks

PAGE 12

Bilzingsleben series, Pt. 6: Mathematics

John Feliks

PAGE 15

Calico Pt.2, Inter- view transcript

Fred E. Budinger

PAGE 18

EARLY early man in Colorado

Virginia Steen-McIntyre

PAGE 19

The 4% Universe

Virginia Steen-McIntyre

PAGE 20

4 arguments elimi- nation of television

John Feliks

PAGE 21

Avocational Ar- chaeology: Arti- facts w/matrix

Virginia Steen-McIntyre

- Challenging the tenets of mainstream scientific agendas -

IN THIS ISSUE

Fighting against science that eliminates data

Among other topics in this issue, you will learn how the science community actually *destroys data* and promotes a false impression of human ancestors to the public through concealing evidence (Law: spoliation). PCN is in its 3rd year of bringing you in-depth stories about the improper manipulation of scientific data.

Page 4: Pleistocene art is becoming increasingly difficult to explain in mainstream terms, e.g., 17,000-70,000-year old Australian rock art has been compared to Matisse, Dali, Durer, and Picasso. [Click to read more »](#)

Pages 7-11: As we have reported in earlier issues, an increasingly Internet-savvy general public is no longer taking science authorities at their word—and for good reason. [Click to read more »](#)

Page 12: The Lower Paleolithic origins of advanced mathematics. [Click to read more »](#)



Protecting Calico

By Fred E. Budinger, Jr.

Archaeologist

I have been asked by PCN to comment on the recent history and current status of Calico Early Man Site in southern California (Fig. 1). In short, the site is "Threatened and Endangered." If Calico were a small, furry vertebrate, and not an archaeological site, it would be on everybody's T & E list.

My allotted word count allows only a synoptic outline (followed in Part 2 by an illuminating in-

terview with the new director of Calico):

visitation and excavation on the basis that they were OSHA-

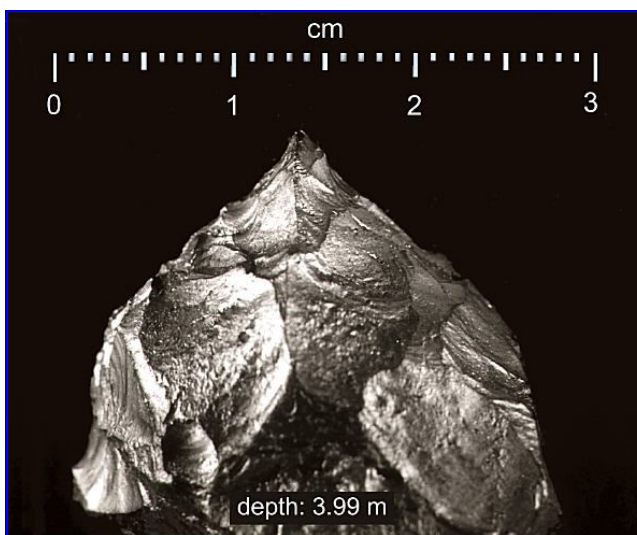


Fig.1. A small, finely-worked, symmetrical, black chert graver from Calico Early Man Site (c. 200,000 years old) near Barstow in southern California, created by the sequential removal of dozens of flakes in a patterned manner. There is no possibility that this object could be a "geofact" produced by natural geological processes. Coated with powdered aluminum (www.calicodig.org). Photo: D. Griffin.

defined "confined spaces." One of our *Friends of Calico* (F/C) members approached the then-new BLM Area Manager and indicated the pits were unsafe because they were not properly shored. This was done despite the fact that BLM Barstow had on file a signed and certified inspection by both a civil engineer and a geologist indicating that sediments at Calico were *indurated* (well-cemented) and deep pits did not require extensive shoring.

Volunteer excavation had to be moved from Master Pit III to

- In spring 2006, the BLM (Bureau of Land Management) closed all three Master Pits to

> [Cont. on page 2](#)

Calico (cont.)

"[Dr. Schroth] and her crew ... have eliminated 30-40 per-



Fig. 2. The author, Fred E. Budinger, Project Director of Calico Early Man Site (1981-2008), measuring objects exposed in the wall of Master Pit I. Photo: T. Oberlander; Inset photo: Tom Baldwin.

cent of the more than 60,000 Calico artifacts."

"Any and all mention of my work and the work of the various scientists who have worked on site dating has also been eliminated."

the very shallow Rock Wren Test Pit where the artifacts date to only 14.4 ± 2.2 ka. The Calico artifacts from the deep pits are at least 200ka as determined by U-series dating and surface Be10 dating.

- The legally responsible party on all federal excavation permits, etc., is a California not-for-profit organization known as "The Friends of Calico Early Man Site, Inc" (F/C). F/C has an IRS 501(c)(3) tax-exempt status such that grants and donations can be solicited. I was instrumental in organizing F/C in 1981. It was the only way to keep the project going. The Bylaws allowed for the hiring of a site curator/manager, but not for the hiring of a Calico Project Director. The selection of the (unpaid) project director is by the F/C Board of Directors (**Fig. 2; See also Fig. 3**).

- During the summer of 2008, I was deposed as Calico Project Director. In my stead, Dr. Adella "Dee" Schroth was selected as the new director. Dr. Schroth is not a believer in "Early Man in America." In the last couple of years, she and her crew of volunteers have eliminated 30-40 percent of the more than 60,000 Calico artifacts (see interview transcript in *Part 2*). Note that the eliminated pieces had already been accepted and cataloged as *bona fide* artifacts in a federally recognized curation facility. They had already been reviewed and accepted by my paid third-party lithic analyst, Christopher Hardaker (MA,

archaeology) of Tucson, Arizona (**Figs. 4 and 5**).

- One might hypothesize that both the unwarranted closure of the pits and the elimination of 30-40 percent of the Calico artifacts constitute "adverse impacts" to a Section 106 Historic Property as it is listed in the National Register of Historic Places.

- All interpretive materials I had installed in the on-site Visitor Center have been removed. In large part, these were portions of the large poster I prepared for the *Clovis and Beyond* conference in Santa Fe, New Mexico in 1999. Any and all mention of my work and the work of the various scientists who have worked on site dating has also been eliminated. When asked today how old the Calico Site is, Dr. Schroth will answer that the cultural material has never been adequately dated. She



Fig. 3. Famed anthropologist, Dr. Louis Leakey, Project Director of Calico Early Man Site from 1963 until his death in 1972. Calico was the only site in the Western Hemisphere excavated by Leakey.

will not accept the U-series dates of at least 200ka for the cultural material. Neither does Dr. Schroth accept the surface beryllium-10 age of 198ka by Teresa Davis and Dr. Lewis Owen (University of Cincinnati)

and others; the sediment TL dating by Dr. Nick Debenham; nor the soil profile analyses by Dr. Roy Shlemon (Newport Beach, CA).

- In earlier times, Dr. Schroth, when asked the age of the artifacts from the deep pits, often answered "no older than 30,000 years." She views Calico as a very early Paleoindian Site, not an Early Man Site. The artifacts in Master Pit I and Master Pit II have to be greater than 100,000 years old because of the state of decomposition of nearby *in situ* andesite boulders. There is no way the fanglomerate or the artifacts could be only 30ka.

- When I was unceremoniously asked to leave the site in 2008, I was advised not to show my face there again (for my own "health and safety"). I've been back only twice, once in the company of my professor Dr. Lewis Owen a couple of years ago and again for "National Archaeology Day" in October 2011. While I was not hassled or harmed *per se*, it was obvious that F/C personnel were uncomfortable with my presence. The special tour in October 2011 was skimpy, disappointing, and in many ways, downright wrong. The guide sheet was full of errors. When I commented to one of the F/C members that I was disappointed that dating was not covered in either the tour or through interpretive displays, I was told: "Fred, the dating's not important. What's important is getting money for the education program."

These days the education pro-

> [Cont. on page 3](#)

Calico (cont.)

"When I was unceremoniously asked to leave the site in 2008, I was advised not to show my face there again—for my own health and safety."

"When I commented to one of the F/C members that I was disappointed that dating was not covered in either the tour or through interpretive displays, I was told: 'Fred, the dating's not important.'"

gram features three "sandbox" digs with phony artifacts set up for elementary school kids. In my day, we interpreted all that

we were learning about the real site—even the controversial 200,000-year old dates. I geared my tours appropriately to my audiences whether they were full PhDs or school kids. I didn't pussyfoot around. Calico was and is controversial. Nobody knows that better than I do. I always presented both sides and refused to engage in "magical thinking" just because it might be politically expedient.

- What to do? First keep in mind that the legally responsible party is the Friends of Calico, the incorporated non-profit organization. What I will be doing (and what I might suggest others do, if they are so inclined) is contacting F/C

through the person of its current president, Mr. Richard Cerreto (cerreto@vvc.edu). I will suggest that F/C refrain from tossing out any more artifacts. I will suggest that F/C accept the U-series and Be-10 dating. (Note: no one has pub-

lished anything in a referred journal that the dating is in error). I will ask him to fix the interpretive material in the

(cahunter@blm.gov)

To date, I have not contacted the California SHPO or the Advisory Council on Historic Preservation.

- In Part 2 (starting on page 14) is a transcript of my February 18, 2012 interview with Dr. Adella Schroth—current Director of Calico Early Man Site. It includes the portions relevant to the fate of Calico's artifacts and the integrity of the site's meticulously cata-

logged scientific materials. The transcript documents some of the above observations.

Editor's note: This article was originally submitted with the title, *The Calico Early Man Site, San Bernardino County, California: Current Status and Recent History.*



FRED E. BUDINGER, JR. is Senior Archaeologist at *Budinger & Associates*. Budinger is also a PhD candidate, [ABD] in Geology, at the University of Cincinnati.

Mailing address:

Fred E. Budinger, Jr.
7010 Barton Street
San Bernardino, California 92404

E-mail:

fbudinger@aol.com

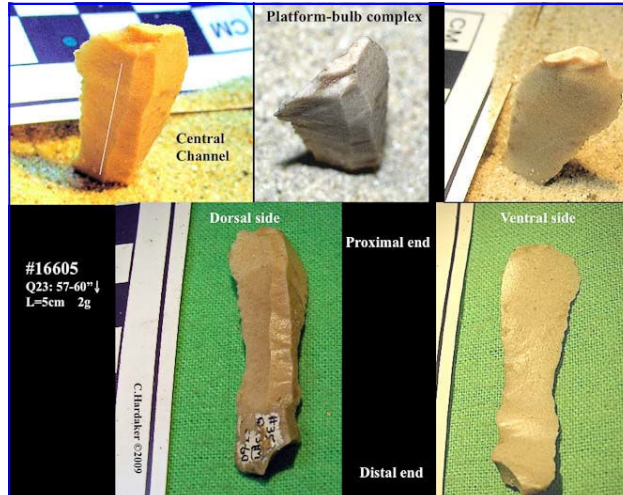


Fig. 4. Artifact #16605 from Calico Early Man Site, an impressive blade catalogued and photographed by archaeologist, Chris Hardaker. Photo compilation courtesy of Chris Hardaker.

Visitor Center, along the trail and at SBCM in time for the Project's 50th year anniversary on November 1st, 2014. No

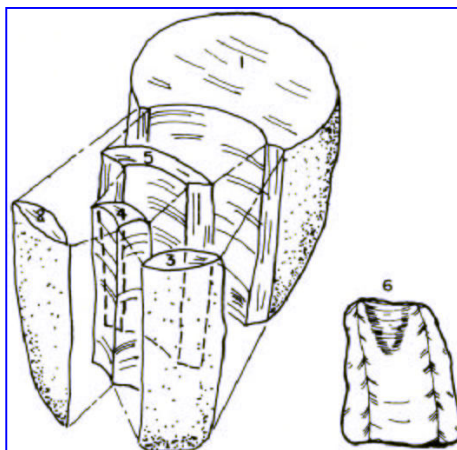


Fig. 5. The 200,000-year old Calico artifact known as "Whitie" (lower right) and the six steps showing how it was produced. From George Carter's, *Earlier Than You Think*.

more magical thinking. The Calico Site is truly old, and the artifacts are real. If you would like to read the details go to

www.calicodig.org

Regarding BLM related issue, I am informing and seeking advice from the BLM State Office Archaeologist, Dr. Charlotte Hunter

Pre-Aboriginal Australian rock art: Wanjina and Bradshaw figures

By Vesna Tenodi MA, archaeology; artist and writer

"The most intriguing anthropomorphic imagery, such as Wanjina and Bradshaw, were created by pre-Aboriginal people. Some were conservatively dated to more than 17,000 years old."



Australian prehistory—the context and background in a nutshell

Who created the ancient Australian cave art? Especially those mysterious anthropomorphic Wanjina and Bradshaw figures?

Over the last two hundred years, Aboriginal informants have repeatedly claimed they did not create the paintings, nor did they have any knowledge of their

origin or meaning. They said "people who were here before us left them, and we found them when we arrived."

Most of Aboriginal cave art belongs to what is commonly known as primitive art, also called ethnographic art or tribal art, and the motifs are often

the same as found in other ancient cultures all over the world. The most intriguing anthropomorphic

imagery, such as Wanjina and Bradshaw, were created by

pre-Aboriginal people. Some were conservatively dated to more than 17,000 years old which more likely applies to later versions of earlier paintings.

Over time, some Aboriginal tribes got into a habit of painting over the existing paintings, covering the ancient art with newly adopted themes such

as sailing ships when they saw the colonists arriving. Some tribes started 'refreshing' the

Wanjina paintings, superimposing layer upon layer of ochre over the original. In more recent times, the Aboriginal tribes started reproducing these images on canvas and turning them into what has become a lucrative commercial art industry.

Wanjina rock art

European exploration of Australia started with the Dutch



Fig. 2. Some of the first Wanjina paintings seen by non-Aboriginals. These were discovered by Lieutenant George Grey during an expedition supported by the Royal Geographical Society. Grey made sketches of the artwork in his journal, *Journal of Two Expeditions of Discovery in North West and Western Australia*, published in 1841.

and Portuguese explorers in the early 17th century, with the colonization of the continent attributed to the English settlers after James Cook's arrival in 1770.

In 1837 Lisbon-born British soldier and explorer George Grey (later governor of South Australia; New Zealand; and Cape Colony,

South Africa), stumbled upon Wanjina paintings in the rugged terrain of North-West Australia. He drew and recorded them in his journal and account of his travels, *Journal of Two Expeditions of Discovery in North West and Western Australia*, published in 1841 (**Figs. 1 and 2**).

Aboriginal informants of that time said that Aborigines never painted these original cave paintings and had no knowledge of their meaning.

Grey's most intriguing find was the fully-clothed Wanjina, its head surrounded by a halo with strange writing on it (**Fig. 3**), as well as

> [Cont. on page 5](#)



Fig. 1. Most ancient Wanjina paintings are in the Kimberley District in the northern part of Western Australia.

Pre-Aboriginal rock art (cont.)

"In 1947, Howard Coate followed George Grey's recorded information [1841] and researched the North-West area, where he re-discovered and re-recorded the clothed Wanjina with inscription on its halo."



Fig. 3. Another Wanjina painting as depicted in George Grey's *Journal of Two Expeditions of Discovery in North West and Western Australia*, 1841. This one was not only fully-clothed but also featured strange writing in its halo. The figure was rediscovered over 100 years later in 1947.

other groups of partly clothed Wanjina figures both male and female, often with a deep-blue halo. The habit-like long robe and footwear were inexplicable, as Aborigines wore no clothes and had no knowledge of such garments.

A hundred years passed before more comprehensive research was conducted by German researchers Andreas Lommel and Helmut Petri.

In 1938, Lommel and Petri explored North-West Australian cave art. Due

to erosion and deterioration of the rock surface, and the flooding of some areas, a lot of cave art has crumbled and disappeared over time.

One of Lommel's main informants was Charlie Numbulmoore (1907-1971), a respected Aboriginal elder from the Worora tribe in the Kimberley region of Western Australia. In his book, *The Unambal* (Lommel, 1952), Lommel described the Wanjina figures as "anthropomorphic figures drawn in rough outline, some very crude and clumsy, but some executed with a consid-

erable measure of primitive refinement, painted in red and yellow ochre." He was intrigued by that group of images, which were far superior to the cave art usually found in native caves (Lommel, *Prehistoric and primitive art*, 1969). Only the eyes and nose are painted, he noted, while the mouth is missing (See **Fig. 4**). However, he did come across one Wanjina image named Janmaramara, a white Wanjina which does have a mouth, contrary to the tribal elders who claimed they "never had a mouth."

Lommel also researched clashes between the old Aboriginal culture and modern civilization which ended with the complete psychic decay and destruction of the old Aboriginal culture as it used to be (Lommel, *Progress into the void: the modernisation of Australia's primitive people*, 1969), in contrast to what passes for Aboriginal culture today.

In 1947, Howard Coate followed George Grey's recorded information and researched the North-West area, where he re-discovered and re-recorded the clothed Wanjina with inscription on its halo or halo-like headdress.

Archaeologist Ian Crawford (*The Art of the Wanjina*, 1968) researched the Kimberley in Western Australia for 30 years, and noted that his Aboriginal informants claimed that their culture, with all its standards and moral values had died, and that the spirit of the Wanjina imagery was gone.

One of Crawford's main guides was also Charlie Numbulmoore, the elder from Worora tribe. That same Kimberley tribe today insists that Wanjina has never had and should never be depicted with a mouth and should never be painted 'outside of the Kimberley.' Today they have forgotten even the most recent past, and no longer remember either Janmaramara or the fact that, until his death in 1971, Charlie kept painting Wanjinias with a mouth.

Despite the claims of contemporary tribes, Wanjina-like images were found in other parts of Australia, and known by different names, such as Quinkan in Queensland, Lightning Brothers in Northern Territory, and Biame in New South Wales, all associated with creation and forces of nature.

In the 1990's, when asked about the meaning of the Wanjina spirit, the Kimberley elder Banggal summed it up by saying: "it's beyond our knowledge."

In December 2010, Margo Neale, a director of the Australian Museum, at the opening of Aboriginal art exhibition at the Vatican, confirmed that Aborigines did

not paint the original Wanjinias, and that they regard them as spirits that emerged from the sea and sky, and started copying the images on bark and small stones.

Bradshaw rock art

In the 1890's: Joseph Bradshaw,

> [Cont. on page 6](#)



Fig. 4. Wanjina rock art from the Kimberley district of Australia (Wikimedia Commons).

Pre-aboriginal rock art (cont.)

"The most comprehensive research into Bradshaw cave art was conducted by Grahame L. Walsh (1932-2007).

...He concluded that they were painted by an unknown race before the last ice age.

Bradshaw paintings were dated—by luminescence technique... to 17,000 years..."

an Englishman, discovered other distinct imagery while traveling in the North-West Australia. He documented these newly-found elongated and dynamic figures, recorded and sketched them

and was fascinated by their aesthetic sophistication (Fig. 5).

His Aboriginal informants told him that these were "rubbish" paintings, that someone left them there, and they often painted over them in front of Joseph Bradshaw, while repeating "it's just rubbish, as if

birds pecked on the rock, so we call them Gwion Gwion, a bird with a long beak."

The most comprehensive research into Bradshaw cave art was conducted by Grahame L. Walsh (1932-2007). Until his death in 2007, he amassed 1.2 million photographs he took over 31 years while traveling around the North-West Australia.

Walsh established that Wanjinina and Bradshaw cave paintings were not created by modern Aborigines, as was confirmed by all of his Aboriginal contacts. He concluded that they were painted by an unknown race before the last ice age.

Bradshaw paintings were dated—by a luminescence technique applied to a fossil wasp-nest fortuitously found on top of a Bradshaw image, indicating that the painting underneath the nest must be

older than the nest itself—to 17,000 years, predating more recent and far less sophisticated Wanjinina imagery by thousands of years.

Even though Walsh was the undisputed expert on the paintings, and his books *Australia's greatest rock art* (1988) and *Bradshaws ancient rock art of North-West Australia* (1994, 2000) were the best compilations of cave paintings ever published, his conclusions upset the Australian Archaeological Association, which was trying to "prove" that present day Aborigines of the North-West had had an unbroken cultural association with the cave paintings since 1788, as is required for Aboriginal Native Title Land claims (see Mabo vs. Queensland court case 1992).

Consequently, on 18 December 1995 the Australian Archaeological Association issued a media statement declaring that Walsh's interpretations were "based on and encourage racist stereotypes." The media statement was signed by Australia's leading archaeologists of the time.

Revolted by being labeled a racist by proponents of the new ideology, Walsh refused to divulge the exact location of most of the Bradshaw paintings he recorded. He also gave instructions for his unique collection of over one million photographs to be destroyed within twenty-four hours of his death.

The paintings, who made them?

According to the literature, the indigenous Aborigines did not paint them; they were there when these folk arrived on the Australian continent (in three waves between

about 50,000 and 10,000 years ago). And how does Mungo Man fit into this puzzle? He was a hominid who is estimated to have died between 62,000 and 68,000 years ago, and was ritually buried. Anatomically, Mungo Man's bones are distinctly different from other human skeletons unearthed in Australia. The elegant crania and gracile skeletal remains were much older than the robust skulls with rugged morphology found at other sites such as Kow Swamp, dated to 10-15,000 years ago. Adding to the mystery, Mungo Man's DNA bares no similarity to the other ancient skeletons, nor to modern Aborigines and modern Europeans. Furthermore, his mitochondrial DNA had become extinct.

Wanjininas. Bradshaws. These masterpieces of pre-Aboriginal people—whoever made them—are beautiful to modern eyes.

VESNA TENODI is an archaeologist, artist, and writer based in Sydney, Australia. She received her Master's Degree in Archaeology from the University of Zagreb, Croatia. She also has a diploma in Fine Arts from the School of Applied Arts in Zagreb. Her Degree Thesis was focused on the spirituality of Neolithic man in Central Europe as evidenced in iconography and symbols in pre-historic cave art and pottery. After migrating to Sydney, she worked for 25 years for the Australian Government, and ran her own business. Today she is an independent researcher and spiritual archaeologist, concentrating on the origins and meaning of pre-Aboriginal Australian rock art. She is also developing a theory of the pre-Aboriginal races which she calls Rajanes and Abrajanes. In 2009, Tenodi established the DreamRaiser project, with a group of artists who explore iconography and ideas contained in ancient art and mythology.

Email: ves@theplanet.net.au

Website: www.modrogorje.com



Fig. 5. Ancient Bradshaw figures from North-West Australia.

In my opinion...

Some thoughts on the mainstream evolution story

By Rockey Whipkey



"Are we thousands of years old or hundreds of thousands? Are we millions of years old?"

Is evolution a farce? Are we being sold a story of evolution to detract us from reality?

Anthropology, archeology, my research in these areas was discouraged a long time ago when I realized that what I was being trained for was to promote an idea of history someone else had decided was the truth. I did not like the idea then and I still don't.

Their idea was that we as humans developed over time to become who we are today. But it was clear to me even then that the evidence they appealed to had been specially selected to point in that direction. Other evidence had been avoided, covered up, or even lost to time, since it didn't fall into their ideals or paradigm.

Today we see many scientists trying to speak out on this but academia has been doing a good job squelching those that speak out. The way academia is set up, it prevents them as well as others such as me from reaching our own conclusions other than what the mainstream professes.

The Pleistocene Coalition is providing new thoughts on

history. They are pressing the need for more open and accurate world-wide dissemination of evidence regarding our prehistory as humans.

The information presented to the public has gotten many of these scientists into hot water today and even over their lifetimes. In some cases such as with Dr. Virginia Steen-McIntyre, going up against the mainstream has taken their careers away and pushed them into the background, with academia doing everything in its power to smash any of these ideas as they create problems for the paradigm of evolution or other scenarios completely controlled by them.

To clarify, I myself am a practicing evolutionary-creationist and happen also to be an ordained non-denominational minister. By evolutionary, I mean that I believe we are evolving *creatively*. In my own personal research, I take in as much information as possible and put it to the test with the available research which does include mainstream science but also includes alternative evidence such as we learn about from the Pleistocene Coalition and in its newsletter.

Some of the discoveries published by the Pleistocene Coalition are not actually

new because in some cases such as in the work of Michael Cremo they are bringing to public attention evidence that had been discovered and even published long ago but was ignored by mainstream scientists who attempted to push a certain perception of reality down our throats. We must all continue to be creative thinkers and open-minded researchers and scientists in order to break away from this kind of control.

From my own research (which includes reading materials that are regarded fringe not only by mainstream scientists but even by many at the Pleistocene Coalition), I am convinced that we on this planet have in the past been much more advanced than the controllers of mainstream science want us to believe. They have in the past and will continue to prevent the truth from reaching our ears and eyes, if we let them.

There are living cultures in the world that have unique perspectives on history that predate our own. While not the same kind of evidence one typically reads in popular science writing they do lead one to wonder just how old we really are. Are we thousands of years old or

> [Cont. on page 8](#)

Thoughts on evolution (cont.)

"Steen-McIntyre's story is also a very strong indication that our science is backwards. It is a sign that science is being manipulated."

"If science works like it is supposed to, it doesn't matter if these dates fall outside the ranges of the popularly-perceived timeline."

"Yes, wealth and worldwide domination may have been the motivation by which today's evolutionary theory was developed, yet that paradigm has never been proven."

hundreds of thousands? Are we millions of years old?

Upright walking apes are always the pretext to the mainstream explanation of humans and part of the single-minded notion that we evolved from monkeys. And this is always proposed with only a few millions of years of natural selection to bring us to where we are today. And with a little bit of chance thrown in for good measure we are told that just thousands of years ago we developed a critical thinking brain. In my opinion, to think humans came from apes especially in so short a time is unfounded or even impossible.

Scientists and researchers of the Pleistocene Coalition have evidence suggesting that man on the American continent predates the mainstream story of his occupation here by hundreds of thousands of years. However, the mainstream story is still believed worldwide. We are told that no one was on the American continent before 12-30,000 years ago. Are we that naive?

I agree with the dates that Steen-McIntyre and her colleagues presented way back in the late 60's and early 70's, and more recently in the past ten years (diatoms, etc.) not only here but to our government at their request. That dating is what got her to this place of fighting for her integrity as a scientist and the unjust suppression of her entire life's work.

Steen-McIntyre's story is also a very strong indication that our science is back-

wards. It is a sign that science is being manipulated.

If science works like it is supposed to, it doesn't matter if these dates fall outside the ranges of the popularly-perceived timeline.

However, qualified scientists such as Dr. Steen-McIntyre must be careful not to question a paradigm created by the elite because in so doing they are going up against the driving force in the accumulation of wealth and human domination. The average reader may not know this but Darwin was part of an upper middle-class elite. What elite actually involves is a small group that controls a disproportionately large amount of the money. We tend to hear more about this in the context of Social Darwinism but the concept is the same in any application.

Yes, wealth and worldwide domination may have been the motivation by which today's evolutionary theory was developed, yet that paradigm has never been proven, and is still in question today. But despite that it has never been proven it is still used as fact to train new minds in the belief.

I have read many of the plausible findings that have begun to appear and at this time I now know that much of what I was trained to think prior is questionable.

To "un-think" that training has become easy since seeing the developments of scientists within the pages of this website alone. And not only here, but information like this is beginning to show

up elsewhere on the Internet as well, and in books and other publications. I marvel at the discoveries within this site, and when I do, things begin to fall into place much more clearly than with the mainstream story. I find we are so much older, perhaps older even than this site wants to admit, and we have always been humans like we are today, and very likely over time we have found and lost intelligence only to regain it again.

I am pleased to say that I regard myself as very open-minded. It is only the control of information by mainstream science and media that limits my ability to see the whole truth. What about you?

Today's research is bringing into question even our highest-held prior history timelines, cultural science, anthropological theories etc., and it confounds even the outside-of-mainstream researchers and scientists. And sometimes, because of earlier assumptions, the results of this research may seem beyond belief.

Why should this be? What is the problem with us being from some other creative thinking society predating our timeline?

Or if I might inquire somewhat more toward my own religious background, what is the problem with discussing our conventional beliefs in beings that supposedly created us in their image? It is an idea stated within documentation from numerous

> [Cont. on page 9](#)

Thoughts on evolution (cont.)

"Very likely over time we have found and lost intelligence only to regain it again."

"The researchers making such claims probably have no background in religious studies or comparative religion and perhaps not even any interest in the subject; so their statements should be regarded as having very little authority or meaning."

cultures around the world of someone or something making man and woman. But the mainstream automatically labels even the question as "unscientific." Is it unscientific to ask the question?

Since my background is in the religious direction, and I am reminded that the topic is not the focus of the Pleistocene Coalition, I will finish with some restraint. However, I would like to make a couple of important points about religion within the context of evolution.

Religion is a label typically placed by the mainstream science community on researchers with findings that do not fall within mainstream science thinking.

The religion label is often used to devalue discoveries made outside the mainstream or even the abilities of those trained to investigate these discoveries and as such are indiscriminately labeled religious. And so, important discoveries fall from study and are placed away from those who simply wish to know the truth.

Religion within the evolution paradigm is also a catch-all category that something found within an archaeological site is often thrown into when it doesn't fall within mainstream thinking.

Something thought to have been done regularly at a site which is clearly not survival-oriented is often labeled as a "religious activity." Artifacts which cannot be explained within a site many times are considered religious within themselves and called,

"ritual objects."

All of this is because of this typical mainstream thinking and training. Finally, let me say that the researchers making such claims probably have no background in religious studies or comparative religion and perhaps worse not even any interest in the subject; so their statements should be regarded as having very little authority or meaning.

Take a look at the fantastic findings right here within the discoveries of science and research of the Pleistocene Coalition and the theories within the newsletter's many issues' pages and see for yourself the amazing capabilities of humans over long periods within the context of human occupation on this planet, and you will see for yourself that relative to today's thinking, many prehistoric cultures may have surpassed the belief systems of today's world. Yes they are fantastic and lead a self-thinking person to really question what we know today as human evolution.

ROCKEY WHIPKEY could be described as a polymath, PC builder, webmaster, theorist and philosopher with a very diverse and unusual background. He was educated in the culinary arts (an accomplished organic chef), anthropology and archaeology; and is also an ordained non-denominational minister with an interest in comparative religion, history, and civilization.

On the trades and politics side, Whipkey ran and assisted in setting up lottery operations and

facilities for the U.S. states of Montana, Vermont and New Hampshire for several years. He is also a professional driver which includes years of driving 18-wheeler semi-trucks across the U.S.

One of Whipkey's more enjoyable jobs was as tour train driver and tour guide in Helena, the historic capital city of Montana (five years), giving several one-hour tours a day to hundreds of international tourists aboard the four-car train which operated on the city streets. He has also been involved in the city's politics as a historic preservation commissioner (four years) and once ran for mayor.

Whipkey has appeared in two movies—one with a speaking part—*Don't Come Knocking* (with Sam Shepard and Jessica Lange) and *Love Comes to the Executioner* (with Jonathan Tucker).

Whipkey is very interested in the new views of ancient archaeology which have been forming. He is an avid participant and follower of new archaeological thinking, as well as human origins and what has brought us to where we are today. Whipkey's interests also extend to theoretical physics.

In my opinion...

Keeping an open mind, Part 1

By Helen Banks

The problem with making assumptions, particularly in science or research, is that the more frequently that assumption is stated, the more likely it is to be accepted as truth. Say it often enough, and it becomes a fact. It is essential in any science to keep an open mind. Too often those who put forward a theory



"Science today is stultified by empire builders and the scramble for funding."

become so cemented to it that any contradicting theory has to be torn down and ridiculed to protect their position. Science today is stultified by empire builders and the scramble for funding.

Two monks were arguing about the temple flag waving in the wind. One said, "The flag moves." The other said, "The wind moves." They argued back and forth but could not agree.

The Sixth Ancestor said, "Gentlemen! It is not the wind that moves; it is not the flag that moves; it is your mind that moves."

The two monks were struck with awe."

- The Mumonkan Case 29, translation by Robert Aitken

Religion in Prehistory

Our ancient forbears were not fools, and were not

fooled. They managed to survive in a hostile environment, by hunting and gathering, and to do that successfully they needed to know *where to go* and *when to go there*, to take advantage of the season's fruitfulness. To do this they needed calendars, and maps. Whilst they may have been able to remember and orally pass down directions to certain sources of food, they would have to have had a method of

measuring the passing of time and predicting the seasons.

The frequent depiction of the Neanderthal as an unkempt grunting idiot belies the reality. Neanderthals possessed a brain larger than our own. Whilst this is not positive evidence that they were smarter than we are, it is known that to advance to the level of intelligence and civilization that modern man

The land of the Neanderthals once stretched from Asia to Western Europe -Helen Banks

At an excavation at an archaeological hill top site near Pulborough, West Sussex, a hoard of Neanderthal tools found in 2008 revealed broken spear tips and other tools, throwing remarkable new light on the life of northern Europe's last Neanderthals.

The finds suggest a thriving, developing population that hunted game such as horses, bison, mammoth and woolly rhinos some 35,000 - 38,000 years ago, rather than communities on the verge of extinction.

"The impression they give is of a population in complete command of both landscape and natural raw materials with a flourishing technology - not a people on the edge of extinction.

The tools we've found at the site are technologically advanced and potentially older than tools in Britain belonging to our own species, *Homo sapiens*," says Dr Matthew Pope of Archaeology South East based at University College London.

The project was directed by Dr Pope and Caroline Wells of Sussex Archaeological Society, working with specialists from the Boxgrove Project and the Worthing Archaeological Society.

has achieved, we needed a larger brain, and to be carnivorous to feed it. With a brain larger than our modern brain, we can safely assume that the Neanderthal was able to think, to analyze, to remember, to speak and communicate, and would therefore have had the mental ability to record those thoughts and conclusions. Neanderthals were certainly omnivorous.

In 2010, it was announced that Neanderthal DNA had been found in some modern humans, but *not* in modern Africans. Ancient-DNA expert Svante Pääbo of Germany's Max Planck Institute for Evolutionary Anthropology examined bones from a cave in Croatia that were 38,000 to 44,000 years old and found 1% to 4% of the DNA sam-

> [Cont. on page 11](#)

Keeping an open mind (cont.)

"A man or woman who could decipher the standing stones and tell you when to plant, when to prepare for the return of the salmon, and when to move your encampment or to prepare for the cold of winter was a valuable person with valuable knowledge."

ples taken from a person of Han Chinese descent, a Papua New Guinean and a French person is shared with Neanderthals—proof that Neanderthals and early modern humans interbred. The gene flow of Neanderthal DNA into early human DNA was found in only one direction: from Neanderthals to us, and is considered a genetic relic.

It would seem likely therefore that the Neanderthal did not become extinct—they interbred and diluted. Could we perhaps propose that this genetic input from the Neanderthal is what has made some of us so successful as a species?

The modern human has built technology upon technology, starting from the simplest stone implements. There was, however, a "great leap forward" in this transcendence. At one point in time, hominids or their descendants made the decision not to leave their fate to chance, and began to plan for the future. To do this, they needed to measure time. First keeping records by making grooves in rocks, then paintings in caves (Lascaux, 15,000 BC), primitive sundials, dozens of calendars of stones or solar observatories (Goseck, Germany 5,000 BC), disc calendars on clay, disc calendars on metal (the Nebra Sky Disc, c. 1500 BC), water clocks, clockwork mechanisms (the Antikythera Mechanism c.83 BC) and so on.

All of these inventions were to aid in *survival*. The openings in caves directed the

sun to shine onto the various etchings in stone indicating the seasons—in spring the salmon run where the sea meets the river—in autumn the stags and the bulls are fat and preoccupied with mating and easy to hunt to put meat aside for the winter—and so on.

Chantal Jègues-Wolkiewiez observed that the paintings in the Lascaux Caves in France were highlighted at certain times of the year by the sun rays. Further, she has shown that the actual positions of the constellations during the Paleolithic are depicted by these paintings.

Survival, not religion. In my opinion, these images and devices were not to worship—they were notations of how to survive, where to go, when to go, and what to eat. Similarly, my opinion is that henges were not altars—they were places of knowledge where people with the knowledge prevailed and advised. Stonehenge, for instance, should not be automatically assumed to be a place of sun worship; rather it is an arrangement of stones that measures and precisely fixes the dates of the solstices and the cycles of the moon, and perhaps also a mathematical calculator as it embodies angles and proportions. That is all that we know definitely—anything else is conjecture.

Did the ancients worship, in our modern sense of the word, anything at all?

An artifact such as a stone phallus is found—and the archaeologist states that the

maker of this item meant it for worship or as a ritual object. Similar items are freely available today...their intended use is not worship! A figurine of a female is described as a deity—rather than merely a piece of art. Look at the ornaments you have in your home—will these be considered to be ritual objects, or your pictures icons to worship in the millennia to come?

Without written evidence of the belief system of ancient peoples, it is fanciful to think that they were seduced by the idea that if they brought food offerings to a piece of stone, good things would come to pass. It is astonishing that it is the first thing to come to mind.

It is so much more likely that knowledge was what they aspired to acquire, and that those who had it were revered. A man or woman who could decipher the standing stones and tell you when to plant, when to prepare for the return of the salmon, and when to move your encampment or to prepare for the cold of winter was a valuable person with valuable knowledge. Indeed, the "holy grail" was knowledge, for knowledge meant survival.

HELEN BANKS spent her early years working on the production side in film and television. She has developed a life-long interest in geography and ancient history studying briefly at university but had to forego formal studies to earn a living. Banks is now semi-retired and lives in Australia.

The graphics of Bilzingsleben series

Scientific misconduct over ancient artifact studies and why you should care

Part 6: The Lower Paleolithic origins of advanced mathematics

By John Feliks

"Once a science calls a challenge an attack you know it is in trouble."

"Homo erectus is an upright ape... It could make tools, but they were very limited tools."

-Mark Pagel, evolutionary biologist

"Upright apes," "limited tools," not-quite-human creatures often described as "It."



We have all heard these types of things from the science community having had them repeatedly pounded into our heads from childhood as though they were facts.

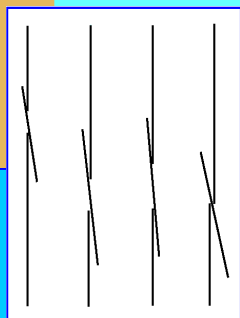


Fig. 2. The **four 3-part composite line sets** of Bilzingsleben Artifact 2 abstracted and equalized demonstrating that *Homo erectus* people were exploring at high precision the nature of lines and understood at the very least the concepts of *collinear line segments* (two segments as parts of a single line) and *sets*. The visible gaps in each set (like Cantor's ternary set) were clearly intended as emphasized by the identical diagonal lines serving as dividers in each set. Four set duplications in a row with deliberate variation should convince any mathematician as to the capabilities of the engravers. These **equalized sets** can be added, subtracted, multiplied, cross-multiplied, divided, or used as a matrix w/12 elements, etc; and in their **original radial form** (see Figs. 1, 3, & 5 and prior papers) can be used in matters related to time, change, motion, subsets, equations and functions. Evolutionary scientists tell you these people were part of a stagnant society. Do you believe them?

They are not facts.

And being claimed as facts while conflicting evidence is blocked from the public (Figs. 1-5) you can rest assured that they are not science either.

No true science encourages the promotion of non-facts as facts; and the sooner the world's thinking people remember this and learn to distinguish between real sci-

ences (e.g., chemistry, physics, astronomy, geology, paleontology, biology, psychology, mathematics) and corrupted variants (e.g., evolutionary biology, evolutionary psychology) the sooner we will be able to snap out of the quality of being so easily duped.

It is the opposite of logic to attach an ideological qualifier to the name of a scientific field for if the ideology is discredited the entire field goes with it. Proof of advanced mathematics in *Homo erectus* must of necessity be blocked in corrupted sciences because their evolutionary qualifiers require non-objectivity from their adherents. It is why devotees such as Richard Dawkins resort to tactics like name-calling, censorship, or attempts to force legislation preventing alterna-

tives from being discussed in the science classroom; they resort to such behaviors in order

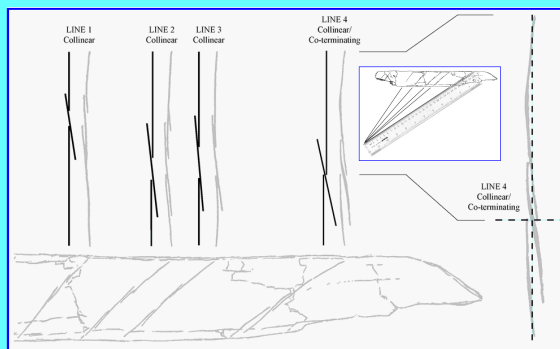


Fig. 1. Removing the radial variable (inset) and **equalizing the lengths of the four 3-part composite line groups or sets** (see magnification at right) of Bilzingsleben Artifact 2 (a 370,000-year old engraved rib bone of a large unidentified mammal). The artifact was possibly a multi-purpose mathematical tool as sophisticated as a slide rule with potential uses including not only simple counting or its proposed use as a straight edge (see Part 1, *Proof of straight edge use by Homo erectus*) but also for uses involving trigonometry, ratio, logarithms, exponents, and fractals (see Fig. 2); and equally-demonstrable non-mathematical uses. Note that all four line groups were already set by the engraver to the same *x-axis* (bottom edge of artifact). Mainstream science has aggressively promoted the evolutionary idea that *Homo erectus* was an ape-man while blocking geometric proof of modern-level intelligence. In, *Manufacturing Consent: Noam Chomsky and the Media*, we learn how power elites control public knowledge. In the case of demeaning *Homo erectus* the elite are not corporations but evolutionary scientists who, unable to counter empirical data, resort to suppression—one reason the late Carl Sagan emphasized that true science must not respect authority. Suppression of conflicting evidence is how the masses are duped when it comes to the topic of human origins.

to defend corrupted fields against what they call "attacks" from challengers. Once a science calls a *challenge* an *attack* you know it is in trouble.

Dawkins is well-exposed in the fact that he has more invested in evolution than science as his preoccupation with attacking religion attests. In fact, Dawkins may feel he doesn't have much

> [Cont. on page 13](#)

Lower Paleolithic origins of mathematics (cont.)

choice but to fight in this way (i.e. kicking opponents in the

groin rather than responding intelligently) because by ad-

mitting contrary evidence into *normal* scientific dis-

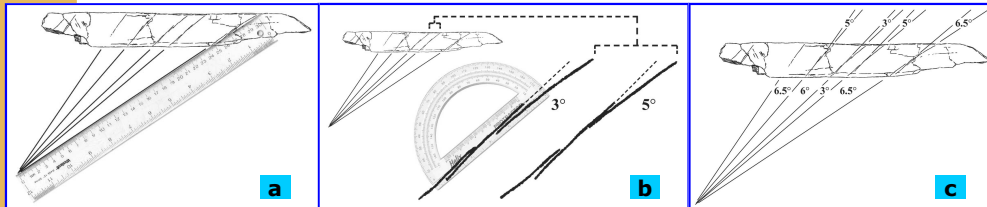


Fig. 3. Steps toward the infinite radial motif of Fig. 5. **a.) Radial pattern.** Proof of association between a complex graphic (or set) and an invisible abstract point. This is *The Graphics of Bilzingsleben Slide #43*—one of the “straight edge” proofs supporting the author’s claim of high intelligence in *Homo erectus* people. **PROOF OF COMPLEXITY:** The primary engravings of *Artifact 2* consist of four repeating logarithmically-varying 3-part composite and collinear line sets (Figs. 1, 2, and 3b). These already-complex sets represent the ‘visible’ components of a large radial motif and double-serve as vectors ending at the upper edge of the artifact and as a pencil of rays extending from zero (origin or vertex of rays) toward infinity (Figs. 3a, 3c and 5). The motifs perform these two roles by way of self-similar fractal angles between 3° and 6.5° (Fig. 3c) with the angles in the motifs (e.g., 3b) duplicated in their orientations to the *x-axis* (bottom horizontal of the artifact). The composite groups and two more line segments (the first radial plus the parallel to its left) are arranged in a ratio series discovered by Dietrich and Ursula Mania (1988; *Deliberate engravings on bone artifacts of Homo erectus*. *Rock Art Research* 5[2]: 91-107) spaced at the ratio 32213 (see [Part 1, Proof of straight edge use by Homo erectus](#)). These and other details are what make *Artifact 2* a complex graphic or set.

REGARDING PROOF OF ASSOCIATION: Finally, this complex radial set projects outward from an invisible abstract point, vertex, or zero (3a-c and 5). The myriad qualities of this and the other artifacts from Bilzingsleben (e.g., Fig. 4) show that the infrastructure necessary for modern language was present during the time of *Homo erectus* 400,000 years ago with these proofs providing the first empirical evidence supporting Chomsky’s 50-year theory that human language was fully-developed at whatever point in time it first appeared (see [Part 2, Censoring the world’s oldest human language](#)). **b.) Subsets.** Level 2 fractal angles each consisting of two sets of collinear line segments with breaking divider lines (Level 1 is the radial pattern or superset of the subsets). Noteworthy is the engraved 3° angle which is remarkable by any standards of non-mechanized precision especially seeing it was engraved with a flint knife.

c.) Fractal angle symmetry. Level 1 and Level 2 fractal angles. These self-similar angles include more sophistication than detailed here such as diminution and augmentation (Feliks 2008, *Phi in the Acheulian*). The paper was blocked from publication for five years by three overseeing authorities: 1.) the XV UISPP Congress under the direction of Luiz Oosterbeek (Polytechnic Institute of Tomar) who called the paper a polemic treating the author as a troublemaker, 2.) Chair of the *Pleistocene Palaeoart of the World* session (associate of the director) who after referring to the paper as “absolutely outstanding and stunning... breathtaking... a landmark contribution,” cc’d to researchers that it had “no scientific merit,” and 3.) Elsevier’s *Journal of Human Evolution* (predictably defending the evolutionary paradigm with an anonymous censorship board blocking the paper from publication).

This is how the science community—committed to the ape-man paradigm—responded to rigorous geometric data. In the process, the author’s work was circulated to competitive peer reviewers worldwide who absorbed the confidence of the paper into their own work without citation; this new confidence showed up in quick publications with sudden changes in direction or conviction disproportionate to the material being offered as evidence; these changes included uncharacteristically exaggerated claims of early human intelligence and graphics ability, though with little more evidence than what the authors had five, ten, or even 20 years prior. This was all done while the original author’s work was being relegated to an obscure miscellanea volume by Dr. Oosterbeek. I was prepared for behaviors such as this from the science community having already much experience of both censorship and plagiarism; it is why I put additional work into producing a detailed handout of all slides for *The Graphics of Bilzingsleben* presentation and registered the work. Conclusion: If researchers who are requested to present their latest unpublished and rigorous work in a mainstream forum cannot trust their work to the science community by granting privileged access for peer review then no one can trust this community.

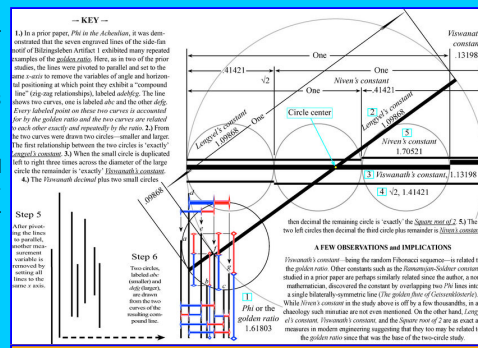


Fig. 4. Five constants from an Acheulian compound line. *Aplimat 2012*. Study of a different motif included here as a reminder that the claims for mathematics at Bilzingsleben are not limited to those discussed in this article. The artifacts are also expressible in trigonometric and projective terms not at all suggesting the work of apes.

course the devotee of a corrupted field must anticipate its potential demise.

Advanced early human mathematics is blocked from publication for the simple reason that the evolutionary paradigm requires an ape-man phase. Anonymous peer reviewers who censor geometric evidence to protect this paradigm need to be smoked out of their nest. What they do is not science.

Evolutionary psychology, a newcomer on the evolutionary bandwagon, will be the first to go. Since they didn’t anticipate an “attack” from empirical evidence they had no “scientific”

“Advanced early human mathematics is blocked from publication for the simple reason that the evolutionary paradigm requires an ape-man phase.”

> [Cont. on page 14](#)

Lower Paleolithic origins of mathematics (cont.)

"We don't need fossils in order to demonstrate that evolution is a

defense. Their only defense was, and still is, censorship.

This censorship is supported by

the greater part of my life was spent with paleontology for the most part unhindered by an

ideologically- vectored science education so I am familiar with the evidence from fossils in a more objective way than had I been programmed. Fossils have never been anything but trouble for evolution fanatics (see Richard Dawkins' solu-

tion in the sidebar. If you are impressed, I strongly recommend going after your alma mater, perhaps in a class-action suit as you are clearly not the only victim). You typically hear that thoughts do not fossilize but the engraved artifacts from Bilzingsleben are mathematical 'cognitive fossils' as impeccable as 'trace fossils' in paleontology only instead of

Of course, I am exposed to the ubiquitous rhetoric of "Homo erectus the ape-man" just like everyone else but staying out of the system during a crucial educational time was enough to let a small spark of objectivity remain. We all need to protect our own sparks from childhood and not allow ourselves to be duped by evolutionary rhetoric. Evolutionary biology is a harder fortress to take down than evolutionary psychology for only "one" reason—a hundred years of flooding the public and academia with so much convoluted rhetoric that normally intelligent people can't even see it.

Invisible rhetoric, cognitive trickery, scientific dishonesty works like this: Begin by forcing absorption of an ideology during childhood in a captive audience setting (i.e. as 'science' in the classroom). By the time of high school, students will naturally mistake the rhetoric they use to "think with" as being their own mind which in reality has become the medium of the rhetoric and so draws no attention to itself. Finally, by the time of university adults have lost all critical thinking ability and are naively convinced there is nothing but tons and tons of physical evidence supporting evolutionary theory even though they have "NEVER" seen it. That's how powerful long-term brainwashing can be.

JOHN FELIKS has specialized in the study of early human cognition for nearly twenty years using an approach based on geometry and techniques of drafting. Feliks is not a mathematician; however, he uses the mathematics of ancient artifacts to show that human cognition does not evolve. One aspect of Feliks' experience that has helped to understand artifacts is a background in music; he is a long-time composer in a Bach-like tradition as well as an acoustic-rock songwriter and taught computer music including MIDI, digital audio editing, and music notation in a college music lab for 11 years.

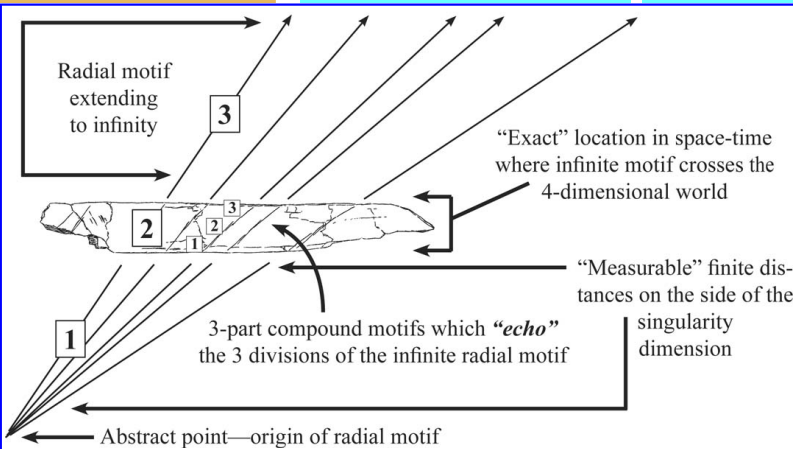


Fig.5. Proof of association between an abstract point and infinity (via a complex set). This figure is also described as "an infinite radial motif echoed at a 'crossing point' in two-dimensional space." This is Slide #44 from *The Graphics of Bilzingsleben* program presented at the XV UISPP Congress, Lisbon, 2006. It is the radial quality of this motif—as opposed to its popular interpretation as a set of parallel lines—that makes the association between zero and infinity possible. Without this radial quality the line segments comprising the motif would only suggest at most four infinite lines broken into collinear ray pairs or opposite rays with nothing but the gap measurable and suggesting no association except similarity between the sets. The abstract point or origin here represents "zero." Three other Bilzingsleben artifacts feature the very same convention of radial lines referenced to an invisible abstract point so the idea of deliberate zero representation is not mere conjecture. The four artifacts have all been plotted to precision on a curvilinear grid showing not only their spatial relationship to each other but also to zero and infinity (Feliks, J. 2010. *Base grids of a suppressed Homo erectus knowledge system*. *Pleistocene Coalition News* 3 [6]: 12-14). Engraved at a high level of precision, Artifact 2 itself breaks the infinite radial motif into three parts as labeled in the figure: **1.)** measurable finite distances on the side of the singularity dimension or zero, **2.)** The physical artifact's exact location in space-time (i.e. wherever and whenever it may be) where its engravings represent a visible manifestation of the invisible infinite radial motif crossing the 4-dimensional world (three of space and one of time—string theories aside for now but for good reason not discarded), and **3.)** Radial motif or set extending to infinity. The full radial set—characterized by measurable angles—is compared by analogy with its four 3-part subsets (each consisting of two collinear line segments deliberately gapped like in Cantor's no-middle-third set) with breaks confirmed by insertion of likewise measurable angled line segments (as seen in Figs. 1, 2, and 3b). In the infinite radial motif, the artifact itself (as shown in the section labeled '2' of the figure above) represents the gapped space. *The Graphics of Bilzingsleben* thesis paper—which apart from transparent proofs of early language and mathematics also included a rigorous critical reassessment of the evolutionary view of early peoples as "hominids" capable of little more than surviving—was finally dumped into a miscellanea volume of little use to anyone. After many similar experiences it was the final proof I needed that anthropology is not true science because it manipulates evidence and what the public knows or believes about human prehistory.

fact. ... it would be an obviously true fact even if not a single fossil had ever been formed."

-Richard Dawkins

evolutionary biologists because they are aware that if one front is lost more devastating "attacks" may be on the horizon and they would be correct to imagine it. I know this because

showing the tracks and burrows of where ancient animals went with their bodies the Bilzingsleben artifacts show where *Homo erectus* people went with their minds.

Saving Calico Early Man Site, Part 2

By Fred E. Bundinger, Jr., Archaeologist



Q: So pieces from Pit I were put with the stockpile for Pit I and Pit II were put with the stockpiles for Pit II?

A: No

Q: No?

A: The information painted on the rocks—and these were rocks not artifacts—were scratched out and just put in a pile.

Q: OK. So you obliterated the data?"

A: Right

Q: With another pen?

A: Actually we scratched the paint off.

Continuing from Part 1, Below are the relevant parts of my February 18, 2012 interview with Dr. Adella (Dee) Schroth—

current Director of Calico Early Man Site—which document some of the observations detailed in Part 1.

Many thanks to my wife, Pam Budinger, for transcribing the 45-minute tape.

Q—Fred E. Bundinger: Good morning Dee.

A—Dr. Adell Schroth: Good morning

Q: First of all I will mention that Jim Bischoff is trying to get to Ren to debate the geology. But Ren evidently has dropped out of sight pretty much. And so he said that he would be happy to debate you about the age of the Calico Site in any open forum [Eds. Note: See PCN, Sept-Oct. 2011, [Jim Bischoff responds to challenge of his original findings](#)].

A: I do not debate science. Science is not debatable.

Q: Science is not debatable?

A: The interpretation of science is debatable.

Q: OK

A: I am not a geologist. Ren is the geologist.

Q: Is Ren the geologist for Friends of Calico?

A: No. She is a geologist working on her PhD from the Calico deposits.

Q: Really!

A: Yes.

Q: Where is she taking her doctorate?

A: I believe at the University of Washington.

Q: And she is actually in the program now?

A: As far as I know, I do not

know for sure. She was a year or two ago.

Q: Ok. So do you look to her for geologic interpretations of Calico?

A: I am not a geologist. So anybody can interpret.

Q: Ok. Let me get to the first things that I am curious about. I got a copy of the newsletter and it said that you had reexamined the collection and dropped some 30–40% of the pieces. Is that true?

A: Yes.

Q: Is that the entire assemblage? Does that include Master Pit I, Master Pit II, Master Pit III?

A: And all the test pits and Ritner's Ridge, and the surface collection. It includes everything.

Q: Everything. OK. And the pieces that were deleted were?

A: Not artifactual.

Q: OK. Did you make a list of what you were ...

A: Yes.

Q: [dropping out]

A: Yes.

Q: So there is a list with the pieces? I presume from the newsletter or something that pieces were returned to the site?

A: Yes

Q: So pieces from Pit I were put with the stockpile for Pit I and Pit II were put with the stockpiles for Pit II?

A: No

Q: No?

A: The information painted on the rocks—and these were rocks not artifacts—were scratched out and just put in a pile.

Q: OK. So you obliterated the data?

A: Right

Q: With another pen?

A: Actually we scratched the paint off.

Q: Oh. With a knife or something?

A: Another flake or something. [Laughter]. Whatever was handy.

Q: Ah. So this included all of the stuff that Christopher Hardaker had gone through over the year and half that he was here?

A: I have no idea of what he has gone through or not.

Q: Well, I know that he had finished Master Pit I and II but he had not gotten to Master Pit III yet.

A: OK

Q: If you dropped out 30–40 percent, do you have any idea what that number amounts to? It must be several thousand.

A: I would have to look at the catalog and see.

Q: Do you know what the total artifact count is now?

A: A lot of it is good debitage. So I could not give you a count. But it would include the stuff dropped out.

Q: OK. We had about 60,000 pieces of debitage, and what I call technical flakes. How many do you think we have now?

A: I have no idea. We have not finished.

Q: We had about 2,000 really good pieces that were formed tools, good cores, and preforms. Do we still have about 2,000 of those?

A: Oh yeah.

Q: Any more than 2,000? Do you know?

A: I do not know. We have not finished yet.

Q: OK. So the pieces that you have dropped out are physically outside of the building now? There back

> [Cont. on page 16](#)

Saving Calico Early Man Site (cont.)

Q: *Chris Hardaker was doing the bipolar work and he was finding "orange segments." Did you keep or drop those that he identified as having evidence of bipolar flaking?*

A: *No idea.*

Q: *Now I notice in a newsletter from 2008 that the objective Mission Statement had been changed to the "education." That it was actually an educational effort, not a science effort.*

A: *Education, Science*

Q: *No. Science was first.*

A: *and history*

Q: *Science was always a priority.*

A: *Right*

out in the desert?

A: Right

Q: And do I understand that you are renumbering the catalog?

A: No. We are not renumbering anything.

Q: OK. Maybe I got a bum steer on that. I hear that (this was either 3rd, 4th or 5th hand) that all of the specimens were getting new numbers.

A: No

Q: So the numbers that Hardaker assigned are still good?

A: Yes

Q: OK. And his catalog now carries notations of what pieces have been dropped out?

A: Yes.

Q: OK. Ah...

A: We did a column and if they were dropped out it says, "deaccessioned." Called deaccessioned and put the date that it was deaccessioned. So we know exactly when it was deaccessioned. And that it was deaccessioned.

Q: OK. And does it give the reason why it was deaccessioned?

A: It's a rock.

A: When Dee Simpson first started out at Calico. She encouraged volunteers by saying everything was an artifact. So there is a lot of rock in the catalog. And it easy to just count them and say that it is all debitage. It is easy [word(s) unintelligible] a lot of non-artifacts stuff.

Q: Chris Hardaker was doing the bipolar work and he was finding "orange segments." Did you keep or drop those that he identified as having evidence of bipolar flaking?

A: No idea. But I do know that there are some with bipolar flaking still in there.

Q: OK

A: Because I have looked at them.

Q: OK. But they have not

been renumbered?

A: No.

Q: Specimen numbers that Hardaker assigned are still good?

A: Yes.

Q: Excellent! Excellent! One of the projects that I was really trying to start when I was still Project Director was the microscopy and photography of the edges showing use-wear. That was part of the Science First Protocol that the Board had voted on. Do you plan to get back to use-wear photography?

A: Eventually. That is in the future.

[Portion of transcript omitted here. F. E. Budinger, Jr.]

Q: Ritner's Ridge is an intriguing area. It is one of the places I thought would always be good for a Master Pit IV. It could incorporate of pits that are already there that Ritner dug. BLM [Bureau of Land Management] is probably still insisting that nothing be deeper than five feet without shoring.

A: Right

Q: If you were to go to Ritner's Ridge and if you looked at the two pits that are there and if you start far enough back you could stair-step it down a five feet then flat five feet then flat, five feet then flat. One could incorporate those deeper parts and never have any vertical part that was never deeper than five feet lower than the adjacent section. Have you ever thought about starting Master Pit IV?

A: No. Not at this time.

Q: Why is that?

A: Ah...I haven't heard you explain it that way.

Q: Well I mean it is "Friends of Calico" not "Friends of the Rock Wren Test Pit."

A: I know.

Q: Ugh. Why are you concentrating the efforts only at Rock Wren? By Calico I mean the deep stuff, the stuff like we find at Master Pits I and II.

A: We are not allowed into Master Pits I, II and III.

Q: Right. But you have the same stuff at Ritner's Ridge. Some very good artifacts have come out of Ritner's Ridge. If you started a big pit now by big I mean probably 40' x 40' because you're going to be going five foot horizontal five feet deep or a little less than five feet deep. Five foot horizontal, five feet deep. If you stair step it down like they did at the Koster Site. Then the BLM would be happy. The designated Mission Statement of Friends of Calico is the scientific investigation of Calico and the interpretation Calico. Now I notice in a newsletter from 2008 that the objective Mission Statement had been changed to the "education." That it was actually an educational effort, not a science effort.

A: Education, Science

Q: No. Science was first.

A: and history

Q: Science was always a priority.

A: Right

Q: So in that regard why are you still working on Rock Wren and that which is sort of a subset...

A: OK

Q: and not going with deep old stuff?

A: What we are going to do is... Rock Wren... is we're going to do lithic technology as it appeared in Master Pits I, II, and III then compare it to the lithic technology of Rock Wren. OK, so we need a sample comparable to Master Pits I, II, and III.

> [Cont. on page 17](#)

Saving Calico Early Man Site (cont.)

Q: *If Bischoff got 200,000 on carbonate rinds on artifacts near the base of the fan...*

A: *They weren't artifacts*

Q: *Yes, they were artifacts.*

Q: OK. How old is the Rock Wren stuff?

A: I do not know.

Q: How old is the stuff out of Master Pits I and II?

A: I do not know.

Q: I would submit that Rock Wren by sediment thermoluminescence is 14,400 years plus or minus 2,200 years.

A: But that's a geological date.

Q: Yes it is. And it is by sediment thermoluminescence done by Dr. Debenham in Nottingham, England. Master Pits I and II: the stuff at depth in the big pits is at least 200,000 by uranium series dating done twice by Bischoff once in the 80's and once just a couple years ago. And also by beryllium 10 and cosmogenic work, the paper I just gave you by Lewis Owen and Teresa Davis. Would you care to comment on either the Bischoff uranium-series dating or the Owen and Davis cosmogenic dating?

A: As geological dates they are solid dates. But that's a geologic date not artifactual dates. We have ... artifacts that appear to be heat-treated.

Q: Yes, I know that. I think we found one—both of us found one the same day.

A: So we are going to after we are done with the interpretation and we know what we are looking at we are going to do thermoluminescence on the artifacts. This will give us a real artifactual date.

Q: OK. But wouldn't you as an archaeologist just agree that in general that when you date the sediments you are dating the site?

A: Not necessarily

Q: If Bischoff got 200,000 on carbonate rinds on artifacts near the base of the fan...

A: They weren't artifacts

Q: Yes, they were artifacts.

A: Ok, We tend to disagree with that.

Q: OK. Even if they were not artifacts... if he dated that level and artifacts were coming from that level... Wouldn't that date that level?

A: Not necessarily

Q: How could it not?

A: It dates the level not the artifacts.

Q: There are no kortovena, rodent holes, or anything bringing artifacts down from another level. There is no rodent burrowing.

A: An earthquake fault runs through the site.

Q: Yes it does, more than one.

A: Yeah. That shifts stuff around.

Q: OK, but we can see it see one of them in evidence in Master Pit I and all the way through the pit, the column and the entrance trench and we know that the arroyo along which we walk up the path is right along the strike of a fault. There are other faults sub-parallel to it many of them running north-northwest, and some almost perpendicular to that. There is also a tremendous amount of folding. In fact, folding has been more of a feature of this geomorphology than faulting. My own interpretation is that the site is a plunging anticline. You have any comment on that?

A: No.

Q: Do you agree or disagree?

A: I do not know.

Q: I think with Master Pits I and II we just fortuitously happened to come down on the flat part of the anticline because if you go east or west you will find that the beds are dipping to the east and west, respectively. You go north and south they are dipping north and south, respectively. At Control and Pit I the beds are dipping 23

degrees to the north-northwest. If you are down there by the old visitor center the beds are dipping to the south. Any comment on that?

A: No. I am not a geologist.

Q: OK. And you don't see that it is useful to use geologic methods to date a site?

A: Sometimes it is, but, like I said, dating the artifacts is the best way to go.

Q: And in this case you want to do the themoluminescence on the heat-treated flakes themselves.

A: Yes. There is so much controversy on the geological dates by various geologists and archaeologists. Dating the artifacts would give us a good solid base.

Q: There hasn't been any controversy about Bischoff's uranium-series dating. Nobody has published an opposing paper. Lewis Owen and Teresa Davis's work on cosmogenic beryllium was just published in January of 2011. So that is just a little over a year ago. There has been nothing in the journals contradicting it. How can you say there is controversy about the dating?

A: The controversy is about the artifact dating to the geological dating. So if the geologic dates are solid they are good. Whether or not the artifacts the cultural component dates the same as the geological dates is in question. And that is what we're going to do. Date the artifacts the cultural component.

.....
Pleistocene Coalition News Readers, I would love to hear from you in this venue. Perhaps we can establish a written point-counter dialog in these pages as archaeologists often do in American Antiquity. I welcome comments from both friend and foe.

FRED E. BUDINGER, JR.

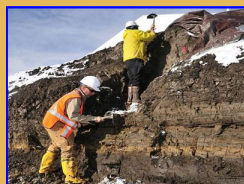
In their own words

The question of "early man" in ice age Colorado

By Virginia Steen-McIntyre

Ph.D, Tephrochronologist (Volcanic ash specialist)

"In our heart of hearts, it looks like a meat cache."



Jeff Pigati and Paul Carrara, U.S. Geological Survey, at the Ziegler Reservoir site. Highly-motivated scientists and volunteers moved more than 8,000 "tons" of dirt by hand in only 6 weeks to determine how climate and plant life changed in the past. Photo: USGS.

"Drs. Kirk Johnson and Ian Miller, co-leaders of the dig, and others noticed small boulders where they shouldn't have been."

Looks like establishment archaeology is beginning to find EARLY early man sites of their own!

The Ziegler Reservoir site in Colorado where a mammoth was recently discovered would have been under a load of ice during the last glaciation, so the lake sediments where interesting soccer ball-sized stones occurred would have been deposited during a warmer (interglacial) time more than 40,000 years ago. Dr. Kirk Johnson ends by saying,

"In our heart of hearts, it looks like a meat cache."

This is reminiscent of those cautious scientists who—while holding a permineralized (fossilized) skull from the Guadaluajara, Mexico area with measurements very like those of the Zhoukoudian *Homo erectus* Skull XI from China—stated:

"However, to reiterate the findings of the Texas A&M workers, these comparisons do not imply that pre-*Homo sapiens* were in the Americas" (Irish et al., 2000).

See [Pleistocene Coalition News, Nov-Dec 2009: p.3](#). -VSM

Question of early man at Ziegler vexes scientists

By Chad Abraham, Aspen [Colorado] Daily News Staff Writer
April 28, 2012

"As more than 40 scientists continue to study the myriad ice age findings from the Ziegler Reservoir [near Snowmass Village, Colorado], one mystery continues to vex experts: Was early man at the site? The question arose this summer at the site outside Snowmass Village, which has yielded a cache of more than 4,800 fossils

since a construction worker uncovered the remains of a young Columbian mammoth in October 2010. Workers were enlarging the drained reservoir's water capacity and installing a new dam; the site is now back under water again. The possible presence of Paleo-Indians arose when Drs. Kirk Johnson and Ian Miller, co-leaders of the dig, and others noticed small boulders where they shouldn't have been. Several soccer ball-sized stones were found in what was once the middle of the ancient lake.

The rocks were next to, above and below a partial mammoth skeleton, Johnson said Wednesday. The rocks were out of place geologically as no similar stones were found nearby, he said. Paleontologists have established that early man used such stones to hide meat caches in ice-bound spots away



Protective tent built over the first mammoth site. Despite Johnson's story, the official claim is that no signs of early human activity have been discovered. Photo: USGS.



Excavation of the Columbian mammoth with out-of-place boulders found at the site. Photo: USGS.



The Ziegler fossil discovery site as cleared away. Tent in center covers the original mammoth. Scientists and volunteers from the Denver Museum of Natural History moved more than 8,000 "tons" of dirt by hand! Photo: USGS.

from predators and to prevent the protein from spoiling."

So it appears as if early man may have used Ziegler as a frozen meat locker, except for one problem: Man wasn't supposed to have been here by then. Most researchers put North America's earliest settlement by early man at around 14,000 years ago. Ziegler's ice age finds are estimated to be between 40,000 and 150,000 years old....

The site is seemingly far too old to have seen Paleo-Indians, but "in our heart of hearts, it looks like a meat cache," Johnson said.

Irish, Joel D. , Stanley D. Davis, John (Jack) E. Lobbell, and Federico A. Solórzano 2000, Prehistoric Human Remains from Jalisco, Mexico, *Current Research in the Pleistocene* 17, 95-96.

The 4% Universe, book quote

By Virginia Steen-McIntyre
Ph.D., Tephrochronologist (Volcanic ash specialist)

"Our view of the cosmos is profoundly wrong, and Copernicus was only the beginning: not just Earth, but all common matter is a marginal part of existence."

"Pity the poor realist who, up to this point, only believed in the part of reality that can be physically handled and manipulated!"

Recently I ran across an interesting item in a science magazine: Researchers who study such things now believe that of the *physical* universe that surrounds us, we with our human senses and complex instruments can access only four per cent. That means that, except for the fact that it affects gravity, 96% of our *physical* universe remains unknown to us. It is a humbling thought! And something we editors will try to keep in mind as we select articles to include in future issues of *Pleistocene Coalition News!*

The subject is discussed in a new book;

Panek, Richard 2011 [The 4% Universe: Dark matter, Dark energy, and the Race to Discover the Rest of Reality](#);

available on Amazon, four-star **** rating.

Quoting the Amazon Review:

The story behind the 2011 Nobel Prize in Physics

"In recent years, a handful of scientists have been racing to explain a disturbing aspect of our universe: only 4 percent of it consists of the matter that makes up you, me, our books, and every star and planet. The rest is completely unknown.

"Richard Panek tells the dramatic story of how scientists reached this cosmos-shattering conclusion. In vivid detail, he narrates the quest to find the "dark" matter and an even more bizarre

substance called dark energy. The scientists involved in this search—Saul Perlmutter, Brian Schmidt, and Adam Riess—shared the 2011 Nobel Prize in Physics for their efforts.

"But these scientists were not all working together. The 4% Universe offers an intimate portrait of the bitter rivalries and fruitful collaborations, the eureka moments and blind alleys that fueled their search, redefined science,

in this case, particularly unfamiliar) world.

"The stakes couldn't be higher. Our view of the cosmos is profoundly wrong, and Copernicus was only the beginning: not just Earth, but all

common matter is a marginal part of existence. Panek's fast-paced narrative, filled with behind-the-scenes details, brings this epic story to life for the very first time."

Pity the poor realist who, up to this point, only believed in

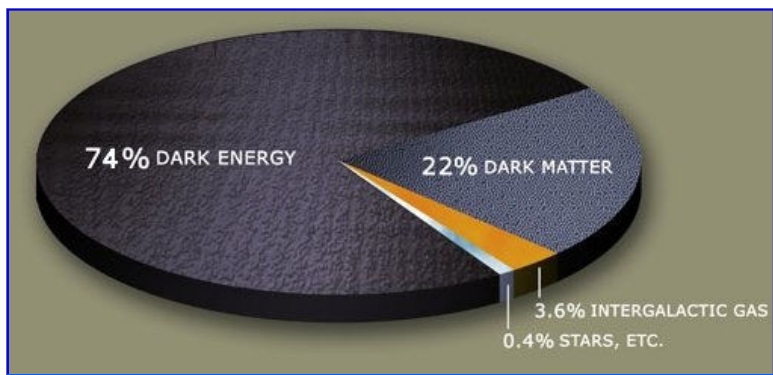
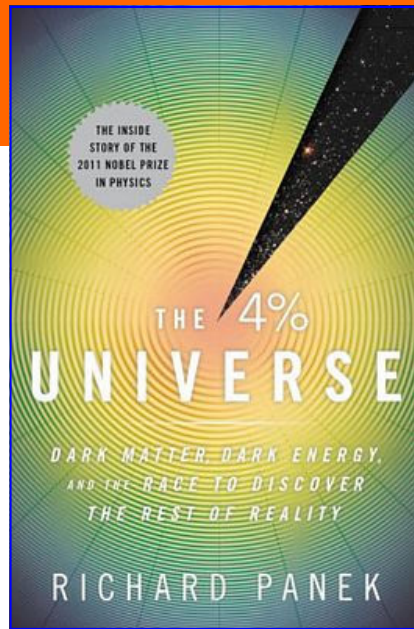


Fig. 1. How the content of the universe is presently understood to be apportioned. 96% is dark matter or energy. Public domain, courtesy of NASA.

and reinvented the universe. Drawing on in-depth, on-site reporting and hundreds of interviews, Panek does for cosmology what others have done for biology, sports, and finance: He tells a fascinating story that illuminates the inner workings of a particular (and

the part of reality that can be physically handled and manipulated!

Has anyone read this book? Would anyone care to make a report on it for the newsletter? Sounds like it's something we all should be made aware of.

Four arguments for the *elimination* of television, Jerry Mander

By John Feliks

"TV stops the critical processes of the brain."

-Jerry Mander, *Four arguments for the elimination of television*

Disclaimer

The author grew up watching some wonderful television programs and, while no longer watching television *per se*, does enjoy DVDs and especially VHS (ability to pop one in and take over right where one left off in a stack of films). The author's interest in Jerry Mander's book has to do with critical thinking and not a belief that television has not produced some very high quality programs.

This is the second in a series of films and books which I would like to highly recommend one see, or read, to help one hone up on critical thinking skills. The first of these was last issue's recommendation to watch the classic b&w film, *12 Angry Men*, starring Henry Fonda.

I believe critical thinking is a very important skill to have in the sciences but that a loss of critical thinking ability is why so many (90%?) with a modern higher educational background are so easily duped by science evolution myths claimed as 'facts' when virtually anyone who has held onto critical thinking skills from childhood would *at the very least* be able as adults to question such myths should conflicting evidence be presented to them. One would expect so, right? Because of the twenty-year observation that this is not the case, i.e. that most "educated" adults (based on statistics) do not have the ability I have been very interested in knowing how this could have happened in the first place and have studied the problem in depth—the phenomena of persuasion, rhetoric, propaganda, brainwashing, cults, *captive audience ideological education*, etc. I believe the skill is lost because of a one-two punch that nearly everyone getting a standard 20th-21st Century Eurocentric education has been the victim of: 1.) indoctrinate people beginning in childhood and sustain it without tolerance for questioning throughout higher education (it can be through television

or through the captive audience science classroom), coupled with, 2.) be absolutely certain to either *prevent* (preferably) or *remove* the ability of critical thinking right off the bat. If you

think you are safe in your belief because you are backed by 900 million scientists and followers, consider this exploration of critical thinking as a challenge. As we all know, it is as easy to dupe a million (via propaganda) as it is to dupe one.

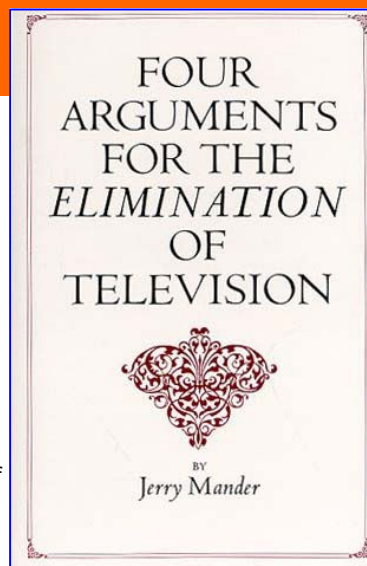
Jerry Mander's book was an important part of learning critical thinking for me:

Sometime back in the Eighties I was perusing with a few friends one of my favorite haunts of the time, Borders Book Store. It isn't always that one can remember the very moment one first saw a particular book—but I do with [*Four arguments for the elimination of television*](#).

Not only do I recall the exact moment, but it is probably also the only book I ever purchased where I recall my exact thoughts upon seeing it:

"What's THIS?! Yeah, right."

That was pretty much the end of my skepticism because within five seconds I had the book in my hands. Once I began to skim it I



realized there was something here. If your thinking upon seeing the book's title is as typical and knee-jerk as mine was then I highly recommend that you read this book. It is

as pertinent in today's modern media world as it was when it was written.

Years later, some of the things I learned from Mander's book really hit home for me when I learned of the technique Sesame Street producers used while learning how to control children through TV and, in the process, take away years of normal inclination for creative activity or exploration. They did it by tracking the eye movements of subject children watching their test programs. If any child looked away from the screen for a second that was a sign that the programming had to be re-worked in that section. The goal was make it so that the children could not look away from the screen.

What do you think happens in higher science education when you are not allowed to look away from an ideology? You don't even know *how* to look away or look at conflicting evidence for yourself because you are already convinced it doesn't exist. Intrigued? I hope so.

Avocational archaeology

Artifacts with adhering matrix, Ohle pit, Germany

By Virginia Steen-McIntyre Ph.D,
Tephrochronologist (Volcanic ash specialist)

After reading the article about artifacts with adhering matrix

([Pleistocene Coalition News, March-April, 2012: pp. 20-22](#)), Ursel Benekendorff submitted

several photos of lithics with matrix attached, from the lower levels of the Ohle pit, Gross-Pampau, Germany. The artifacts are dated circa 423-524,000 years old (Benekendorff 2012, Harrod 2012). Three of the artifacts are shown here.

Artifact 209

Fig.1 is a handaxe-like artifact with a small amount of adhering matrix on the very edge of the piece from the Ohle pit, c. 475,000 years old. Even such a small amount could possibly be enough to help confirm the date.

Versuche II 004

Fig. 2. Note the adhering reddish matrix and the red-stained battered tip.



Fig. 1. Versuche II 209, a handaxe-like artifact with a small amount of adhering matrix remaining on the edge; from the Ohle pit, c. 475,000 years old.

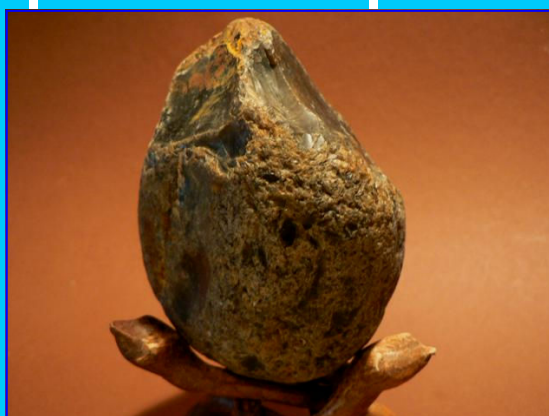


Fig. 2. Versuche II 004. Features a reddish-brown adhering matrix at its battered tip.

Artifact 210

Fig. 3 a-e

Is a handaxe-like artifact

worked on all sides according to Benekendorff. Even after cleaning, some pink-stained residual matrix remains.

From Benekendorff's perspective, this artifact may also be a "figure stone" (i.e. an object that may double serve as a useful tool as well as

have aesthetic qualities separate from its utilitarian function). Note the flat circular area (eye?) in bottom two pictures (picture in the

"The artifacts are dated circa 423-524,000 years old (Benekendorff 2012, Harrod 2012)."

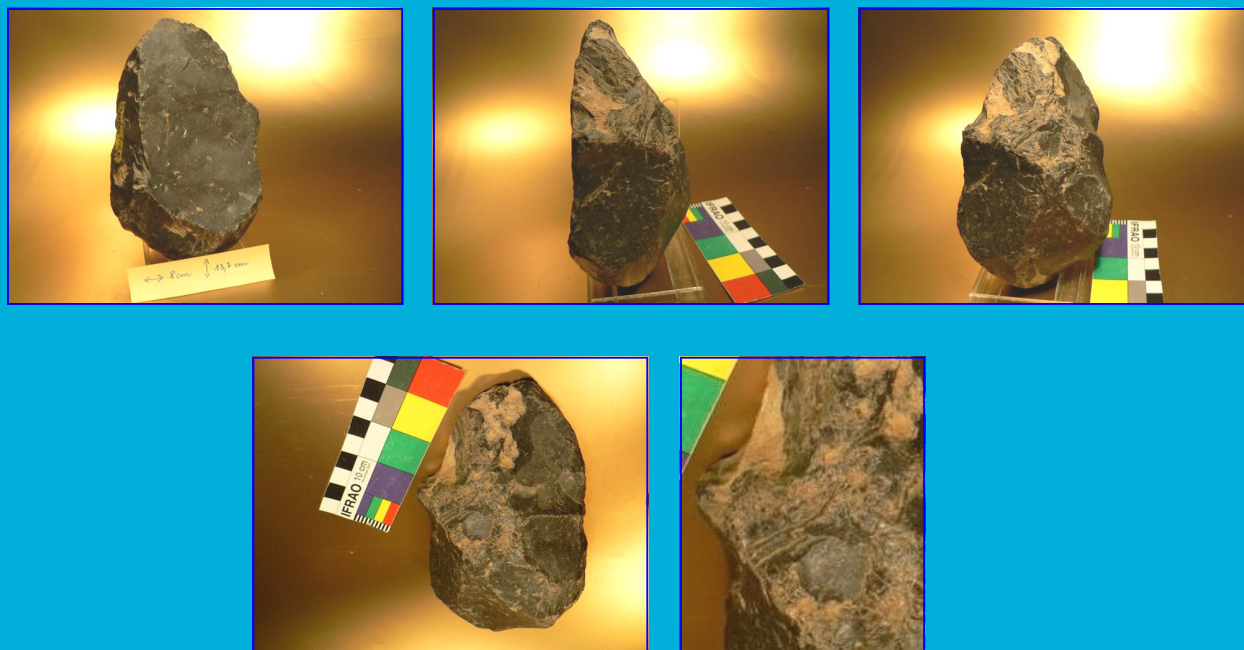


Fig. 3 a-e. Artifact 210, a handaxe-like artifact apparently worked on all sides. Some pink-stained residual matrix remains. In the bottom two pictures—3d, enlarged in 3e—notice the flat circular area (eye?). The area is surrounded by what appear to be cut marks that enhance the feature. Some of the marks are still covered by the adhering matrix. In other words, the cut marks are *older* than the matrix partially covering them.

“More important than that is that some of the marks are still covered by the original adhering matrix; i.e. the cut marks are older than the matrix which is partially covering them.”

lower-right is an enlargement). An important feature is that the area around this circle shows what appear to be cut marks that enhance the feature. More important than that is that some of the marks are still covered by the original adhering matrix; i.e. the cut marks are older than the matrix which is partially covering them.

Ron Alexander, an avocational archaeologist, has mentioned to me that he has seen several artifacts from surface sites in Colorado with what appear to be “eyes”—natural color variations or shapes which he

believes were purposely left in the pieces when they were manufactured. To guide the missiles to their prey perhaps? Is this a common thing? -VSM

References Cited

Benekendorff, U. 2012. Lower Paleolithic “figure stones” from the Ohle gravel pit, Gross-Pampau, Germany, *Pleistocene Coalition News* 4 (1): pp. 17-19.

Harrod, J. 2012. Comments on dating of Benekendorff’s Ohle pit artifacts, *Pleistocene Coalition News* 4 (1): p. 19.

VIRGINIA STEEN-MCINTYRE, PhD, is a tephrochronologist (volcanic ash specialist) involved in preserving and publishing the Palaeolithic evidence from Valsequillo since the late 1960s. Her story first came to public attention in Michael Cremo’s and Richard Thompson’s book, *Forbidden Archeology* (1993), and in the Bill Cote television special, *Mysterious Origins of Man*, hosted by Charleton Heston (1996).



The Pleistocene Coalition

Prehistory is about to change

- Learn the real story of our Palaeolithic ancestors—a cosmopolitan story about intelligent and innovative people—a story which is unlike that promoted by mainstream science.
- Explore and regain confidence in your own ability to think for yourself regarding human ancestry as a broader range of evidence becomes available to you.
- Join a community not afraid to challenge the status quo. Question with confidence any paradigm promoted as "scientific" that depends upon withholding conflicting evidence from the public in order to appear unchallenged.

**PLEISTOCENE COALITION
NEWS**, Vol. 4: Issue 3
(May-June)

© Copyright 2012

PUBLICATION DETAILS

EDITOR-IN-CHIEF/LAYOUT
[John Feliks](#)

COPY EDITORS/PROOFS
[Virginia Steen-McIntyre](#)
[Tom Baldwin](#)
[David Campbell](#)

SPECIALTY EDITORS
Paulette Steeves, Alan Cannell,
James B. Harrod, Rick Dullum,
Matt Gatton

ADVISORY BOARD
[Virginia Steen-McIntyre](#)

CONTRIBUTORS to this ISSUE

Fred Budinger
Vesna Tenodi
Rockey Whipkey
Helen Banks
Ursel Benekendorff
Virginia Steen-McIntyre
John Feliks

***Pleistocene Coalition
News is produced by the
[Pleistocene Coalition](#)
bi-monthly
since October 2009.
Back issues can be found
near the bottom of the
[PC home page.](#)***

To learn more about early
man in the Pleistocene visit
our newly redesigned
website at

pleistocenecoalition.com

The Pleistocene Coalition is now
in its third year of challenging
mainstream scientific dogma.

If you would like to join
the coalition please write
to the editors.