



# PLEISTOCENE COALITION NEWS

VOLUME 18, ISSUE 3

MAY - JUNE 2026

- Challenging the tenets of mainstream scientific agendas -

## Inside

### PAGE 2

**Five new discoveries** reveal prehistoric human mysteries, *Part 3*, 1-million-year-old *Homo sapiens*?

Tina Wan

### PAGE 5

#### Member news/Info:

Neil Steede

(1949-2024)

#### Links to Issues 98-100

### PAGE 6

#### Multi-purpose Paleolithic tools

Alberta and California with spokeshave feature

Tom Baldwin

### PAGE 8

**The unambiguous hand of man** in Ice Age Montana

Richard Dullum

### PAGE 11

#### Legacy of Calico

Early Man Archaeological Project, *Part 9*, Conclusion & References

Fred E. Budinger, Jr.

### PAGE 14

**Debunking evolutionary propaganda.** *Part 10* of the series in reverse (Bryozoa)

John Feliks

### — Welcome to PCN #101 —



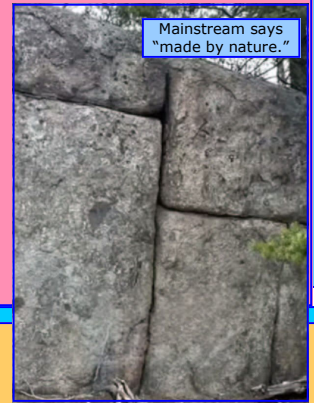
Archaeologist, **Fred E. Budinger, Jr.**, Director of Calico Early Man Site in California's Mojave Desert (after Dr. Louis Leakey) concludes his 9-part series ending with Bassett Point site and his 40 references

for the entire series. See [Budinger p.11](#).

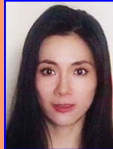


For experts shouting "geofacts" **Richard Dullum** reminds them what

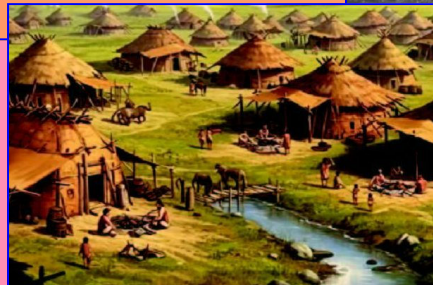
manmade stonework looks like. See [Dullum p.8](#).



Architect and researcher in Paleolithic civilizations, **Tina Wan**, concludes her

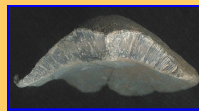
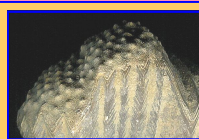


three-part series about remarkable new discoveries. It includes surprising recent evidence *Homo sapiens* may have been walking the earth quite a bit earlier than anticipated and in better living circumstances. See [Wan p.2](#).



since the days of Dr. Louis Leakey discusses biodegradable tools and weapons such as wood or bone spears, darts and arrows (like mentioned by Wan for European sites last issue)...

Objectivity through living and extinct forms contrasting scientific unaccountability



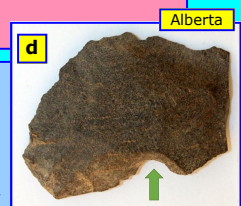
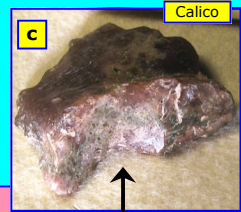
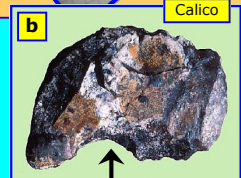
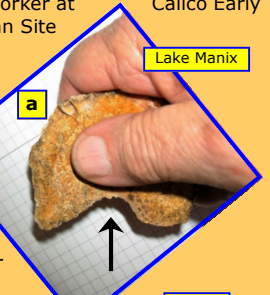
#### Part 10: Bryozoans

No meaningful change after 500 million years. Bryozoans are still bryozoans.

See [Feliks p.14](#).



These tools may have disappeared from genuinely ancient American sites perhaps misleadingly suggesting that wood and bone tools were never present. However, *the stone tools used to make spears, darts or arrows* of the entirely wooden type might still be here. That would make artifacts such as the 'spokeshaves' or concave scrapers at right the only evidence the biodegradable tools ever existed.\*



See [Baldwin p.6](#)



\*As a reminder: The mainstream preconceives all specimens from Calico (e.g., 'b') 'geofacts.' Otherwise, they must admit to older ancient Americans.

# Five new discoveries reveal prehistoric human mysteries, Part 3, 1-million-year-old *Homo sapiens*?

By Tina Wan, B.Arch (Architecture), MLA (Landscape Architecture)



**"If Yunxian 2 walked the Earth a million years ago, say the scientists, early versions of Neanderthal and our**



**Fig. 1.** Reconstruction of *H. longi* skull, found in the Hanjiang river terrace excavation, a coeval species to *H. sapiens*, *H. denisova*, and Neanderthals, dating to approximately 1MyaBP. BBC News.

**own species probably did too."**

In [Part 1](#) and [Part 2](#), I discussed the oldest stone and bone tools, the Kalambo wooden structure, and wood tools that are around 300,000 years old. Here comes the fifth new study, published in *Science* Volume 389, No. 6767 (Sept. 25, 2025) [<https://www.science.org/doi/10.1126/science.ado9202>], pointing to the potential that *Homo sapiens* might have been, shockingly, a million years old.

A skull extracted from the Hanjiang River terrace in China suggests that our species, *Homo sapiens*, began to emerge at least half a million years earlier than we thought ([Fig. 1](#)). It also shows that we co-existed with other sister species, including Neanderthals, for much longer than we've come to believe. The skull was excavated along with two others. But

they were damaged and crushed, which is one of the reasons that Yunxian 2 had been first mis-categorized as *Homo erectus*. After restoring the skull using computer modeling techniques and 3D printing, it is now *reclassified* to be an early version of

*Homo longi*, a sister species at similar levels of development to Neanderthals and *Homo sapiens*.

Genetic evidence suggests it existed alongside them, so if Yunxian 2 walked the Earth a million years ago, say the scientists, early versions of Neanderthal and our own species probably did too. According to Professor Chris Stringer of the Natural History Museum, a co-lead on



**Fig. 2.** AI-assisted illustration of possible ancient human settlement (Craiyon.com).

the research, this startling analysis, if correct, would dramatically shift the timeline of the proposed evolution of large-brained humans back by *at least* half a million years. Professor Stringer stated there are likely to be million-year-old fossils of *Homo sapiens* somewhere on our planet—we simply have not found them yet. *Homo sapiens* potentially being 1 million years old—that's big news, isn't it?

### A shared feature of locations for ancient humans

From the previous two parts, you may already notice there is an interesting shared feature, a parallel among all the above archeological sites. The 3.3-million-year-old Lomekwi stone tools were from Lake Turkana. The 2.8-million-year-old Oldowan tools at Nyayanga were by Lake Victoria. The 1.5-million-year-old bone tools were uncovered by Olduvai Gorge, a Pleistocene lake bed. The Kalambo structure is excavated at Kalambo river. The wooden spears of Schöningen near a prehistoric lake; the Gantangqing wood digging tools came from a lakeshore. And the 1-million-year-old skull was extracted from a river terrace.

All these Paleolithic sites used to be right by a freshwater body, a lake or a river, out in the open and not in caves. Freshwater has been essential for human survival since the dawn of the *Homo* genus. Even today, with modern utility lines to deliver water, over 50% of the world's population lives closer to 3 km or less than 1.9 miles to a surface freshwater body, whilst 90% lives within 10 km or 6.2 miles. It's *natural* for early humans to choose their residential camps or homes in places with a consistent freshwater resource.

### The caveman hypothesis is a false narrative

Prehistoric people are often referred to as "cavemen" who lived in caves and rock shelters. But archeological findings display that early humans stayed extensively near lakes and rivers. The variety of hunting, harvesting and food processing tools at a single location, such as Schöningen, Germany indicate that the site was occupied frequently or for an extended period. Further, the Kalambo structure showed that hominins from almost half a million years ago might have lived in above-ground housing ([Fig. 2](#)).

> [Cont. on page 3](#)

## Five new discoveries reveal prehistoric mysteries (cont.)

***"It also shows that we co-existed with other sister species, including Neanderthals, for much longer than we've come to believe."***

For decades, the mainstream narrative is that permanent dwellings came about only around 10,000 BC, with the invention of agriculture and animal husbandry. Before that, Paleolithic people were forced to move around all the time to follow their food and lived under the shelter of caves and tepees.

But early humans and other extinct hominoid species were never really "cavemen." They did not set up permanent homes in caves; and merely used caves as temporary shelters during their seasonal wanderings. Caves are not always available around freshwater; they could be hard to get to, cold, dark with poor air circulation and no exit egress; they can also be frequented by dangerous animals, which makes them unsuitable as habitations. The misconception of prehistoric people being cavemen relates to the rudimentary archaeological work done in the 19th century. *Human remains and artifacts in remote, rarely occupied caves get preserved much better than in the open landscape, which leads to this biased idea.*

Later studies have proven that archaic humans mostly resided in the open-air settings near water. Desirable locations, such as plains close to freshwater bodies, travel and trade routes would have been reoccupied and rebuilt countless times by various human groups for hundreds of thousands of years. Thus, the traces of early human activities might be mostly destroyed. Our modern cities in the old world might even have rooted from popular and populated Paleolithic sites.

As for prehistoric humans not being nomadic but having wooden dwellings, I'm not really surprised since I've always found the claim

that hunter-gatherers, especially those who lived in cooler regions, were solely nomads with long-term settlements impractical. The human groups consisted of not only strong and mobile hunters, but also young children, pregnant women, and the elderly. Besides the hunters, the group needed individuals to gather necessities, start fires, cook, make clothes and shoes, create tools, set up shelters and care for the injured, young, elderly and sick. Can you imagine a family with older relatives and young kids constantly moving around on foot to chase animals year after year? Every night, they would have to find a safe and protected spot to cook and sleep in the wild.

Granted our ancestors from the stone age were way harder than us, this type of demanding and hectic lifestyle still doesn't seem sustainable. What if they killed a big game animal or gathered a lot of wild cereals – where would they process and store the food if they were always on the go? When they moved, did they carry their water, firewood, cooking pots, vessels, stone tools and other tools with them?

Based on current evidence, these people had neither draft animals nor wheels. Every possession they wanted to keep would need to be carried or hauled. Years of accumulation of tools, containers and dried foods could be fairly heavy. It would make more sense to first scout and find a resourceful place, then move the entire group and establish secure residences, at least seasonal ones, that are close to freshwater. Areas close to rivers and lakes

would be guaranteed to attract animals. If hunter-gatherer tribes found an ideal area with freshwater, good wild grains or legumes, and plentiful game animals and fish year-round, then why would they move away?

***"It's long been believed that our modern civilization is unique, which originated ... around 12,000 years ago."***

It would have been pragmatic and conducive for hunter-gatherers to organize labor, resources and time to build permanent settlements & dwellings for their families and tribes. And recent discoveries discussed earlier are proof of this hunter-gatherer settlement hypothesis.

### **Time available for civilizations**

It's long been believed that our modern civilization is unique, which originated at the end of the last Ice Age, around 12,000 years ago when the climate became warmer and farming finally emerged. Only until then did a warmer climate foster the conditions necessary for farming, and permanent dwellings came about with the invention of agriculture and animal husbandry. Farming allowed for food surpluses. Food surplus supported larger populations, and the development of concentrated living such as villages and towns. New social classes showed up, including priests, warriors, and artisans. Languages evolved into more complex speech due to increasing economic and social needs which formed written records. Writing then greatly helped with the preservation and spreading of knowledge and skills. This crucial transition kick started a rapid technological & economic development, advanced human society from Paleolithic to Neolithic, to the Bronze Age and onward which even-

> [Cont. on page 4](#)

# Five new discoveries reveal prehistoric mysteries (cont.)

## "Homo sapiens

usually reached our current height. *In this concept, warmer climate, farming and sedentary lifestyle are the three prerequisites of fast*

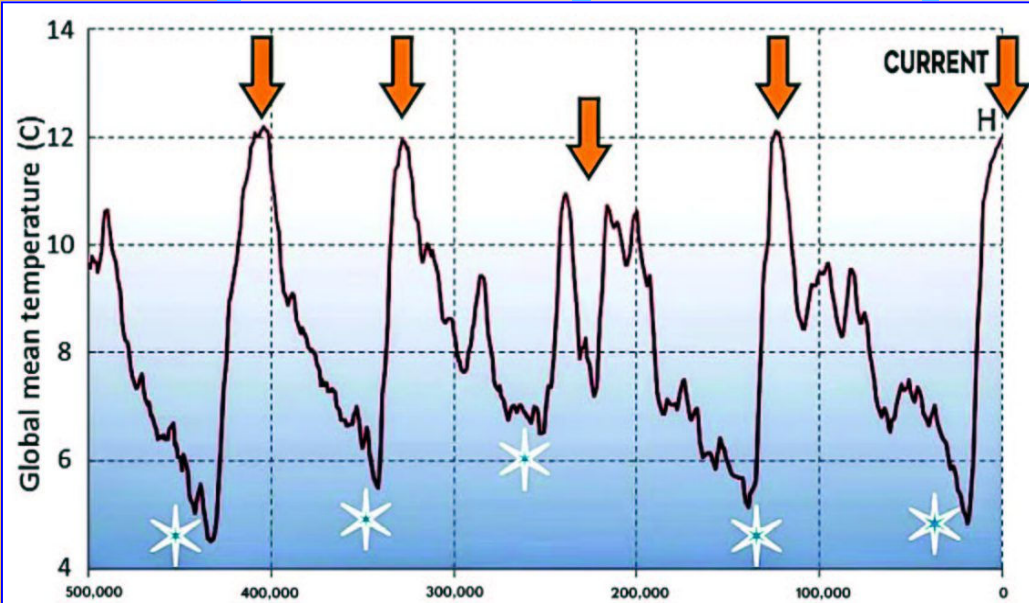
ing, hauling and relocating, they would have more time to study and perfect their tool making, nurture themselves and teach their

but instead settled in wooden dwellings.

New discoveries spawn new questions—if human history is that much

longer, early humans were that much smarter and capable, and had sedentary living for almost half a million years, then why did these early humans, homo sapiens included, stay in the paleolithic age for hundreds of thousands of years without much progress? Why only in the last 12,000 years or so, did humans begin farming and move forward technologically at a dramatic pace? Could there have been earlier,

farming and technical civilizations during the last few interglacial periods?



**Fig. 3.** Time available for civilizations. These are the approximately four prior warm periods the last 500,000 years. (Figure by Steven Earle; [creativecommons.org/licenses/by/4.0/](https://creativecommons.org/licenses/by/4.0/), using data from Lisiecki & Raymo, 2005).

**potentially being 1 million years old—that’s big news, isn’t it?”**

*human society and technological advancement.*

But now archeological finds show there might have been similar conditions before: there were approximately four previous interglacial warm periods for the last 500,000 years (Fig. 3). Any of these warm eras could have ignited farming, particularly for the East Asian tribes who already had a plant-based diet 300,000 years ago, right?

### **Are we sure we are the only ones who invented farming?**

During the Middle paleolithic period, almost half a million years ago, archaic humans possibly already had a sedentary lifestyle and lived indoors in Zambia. Settling down in permanent dwellings would be quite beneficial to human societal development. When people were not burdened by constant mov-

young, enhance their living conditions with new crafts and inventions, and communicate & share their knowledge. Could certain large brained human groups during prior interglacial times have developed farming and built their civilizations?

### **The Takeaway**

So, what have we learned from these discoveries?

1. Tool making might not be exclusive to the homo genus.
2. Early stone age humans were much more sophisticated than thought.
3. Prehistoric hominins were not cavemen but lived by lakeshores and riverbanks.
4. The Stone Age is also the Wood Age, as wooden tools were likely utilized before the birth of stone tools.
5. Middle Paleolithic people were probably not nomadic

TINA WAN is a multi-topic researcher with a Bachelor of Architecture and a Master of Landscape Architecture. Her primary research interests include lost advanced civilizations, prehistoric cultures and megalithic sites. She is a proponent of the hypothesis that precise megalithic sites such as the Great Pyramids, Osireion and Sacsayhuaman were the remnants of a civilization from the late Pleistocene. She has been posting her independent studies and findings in video form on her YouTube channel: Curious Being/ Where Evidence Meets Ancient Mystery.

<https://www.youtube.com/c/CuriousBeingbyTina>

# Member news and other info

## Quick links to articles in PCN #100:

**PAGE 2**  
[Dialogues with the underworld](#) Acoustics of Neolithic tomb Dragos Gheorghiu

**PAGE 4**  
[Mode pace set by climate conditions](#), Part 4

Jan Willem van der Drift

**PAGE 6**  
[Ancient art](#) shows a modern artistic sense Abdulrahman Albalawi

**PAGE 7**  
[Five new discoveries](#) reveal prehistoric human mysteries, Part 2: Wood Age vs. Stone Age Tina Wan

**PAGE 11**  
[A golden nugget](#) from *The Outer Limits* John Feliks

[Member news/Info: Links to Issues 97-99](#)

**PAGE 12**  
[A glance at my archaeological odyssey](#)

Tom Baldwin

**PAGE 14**  
[Pleistocene hard stone construction](#)

Richard Dullum

**PAGE 17**  
[AI and pareidolia](#) The importance of studying the past Patricio Bustamante Díaz

**PAGE 19**  
[Legacy of Calico](#) Early Man Archaeological Project, Part 8, Uranium-series dating Fred E. Budinger, Jr.

**PAGE 21**  
[Debunking evolutionary propaganda](#), Part 11 of the series in reverse (Arthropoda)

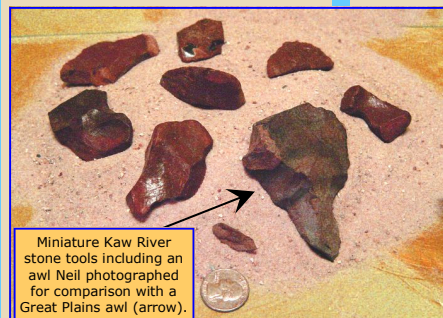
## Late arriving news

MesoAmerican archaeologist, PCN author, and associate of PC Co-founder, Dr. Virginia Steen-McIntyre, **Neil Steede**, MA, passed away August 28, 2024. He was 74 years old.

Neil is best known to our readers by his 2-part PCN series introducing the evidence for very small people having lived in the Kaw River region of ancient Kansas, providing photographs of small skulls and stone tools. See Neil's



photographs of small skulls and stone tools. See Neil's



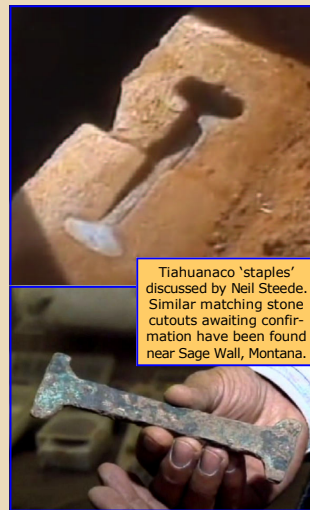
Miniature Kaw River stone tools including an awl Neil photographed for comparison with a Great Plains awl (arrow).

[The Kaw River People, Part 2: Tools and skulls](#) (PCN #36, July-Aug 2015). It contains a link to [Part 1](#), May-June 2015).

Neil is also well-known for bringing to public awareness the enigmatic metal staples of Tiahuanaco, Bolivia, that hold large cut stone blocks together. Even though these staples have been known among the archaeological community since the 1800s, Neil introduced them to a large television audience in the Bill Cote documentary, *The Mysterious Origins of Man* (1996) hosted by Charlton Heston. It was produced after Cote had prior won an Emmy for his *Mystery of the Sphinx*. In [PCN #11](#) (May-June 2011), Cote tells the story of the mainstream's efforts to block the program from ever being seen. Anti-science actions like that are a common problem in anthropology.

Despite professional awareness for 150 years, Steede's effort is important as there still remain many unresolved questions regarding the staples. These include: The actual processes by which they were made; How (purportedly) did Tiahuanaco independently develop similar techniques globally known in such as Greece, Egypt and Cambodia; Doubts about the metal composition and sources; And all this not to mention missing evidence due to behaviors of the Spanish Conquistadors. The staples remain enigmatic to this day.

For the past several years we have been doing an ongoing series by PCN researcher and copy editor, Richard Dullum, on discovery of several unique geological or megalithic sites in SW Montana and, in particular, one called Sage Wall. Related to the site's possible human connections, one exciting turn of events was the nearby discovery of apparent metal staple technology just like that explained by Neil in the Bill Cote documentary.



Tiahuanaco 'staples' discussed by Neil Steede. Similar matching stone cutouts awaiting confirmation have been found near Sage Wall, Montana.

As nearly always in mainstream anthropology, resistance to conflicting evidence such as for high intelligence in early humans or early humans in

[Link to PCN #100](#)

[Link to PCN #99](#)

[Link to PCN #98](#)

the Americas—especially from established writers with years of dogma to defend—can prevent important evidence from being seen by the public for decades. Neil knew well, before most, Virginia's story of suppression now approaching 60 years from working with her in the Bill Cote film and greatly admired her. Neil was a very pleasant person to work with in his PCN work and his regular correspondences even another article in the works prior. A good way to end is with a relevant quote from Carl Sagan: "Science invites us to let the facts in, even when they don't conform to our preconceptions."

# Multi-purpose Paleolithic tools of Alberta and California with 'spokeshave' feature

By Tom Baldwin

**"Lake Manix dried up about 25,000**



**years ago, and when the water left, so did the early people that populated the area around the lake. All they left behind to tell us they were there was their lithic workshops."**

For more on concave scrapers, notches or spokeshaves, see Chris Hardaker [PCN #30 p.3](#); Dr. Richard Michael Gramly 2024 updated "Palaeolithic artifacts...of the Americas," [PCN #88 p.12](#); and Tina Wan about Clacton notches, [PCN #100, p.9](#).

**One of the things I enjoyed** about working all those years at the Calico Early Man Site was the chances I had to get away from our archaeological dig camp, and wander through the surrounding hills. The desert is so barren and yet beautiful out there. Almost nothing grows except desert holly and creosote. There isn't even cactus to be found. The ground itself was covered in desert pavement, which occurs when wind and rain wash away all the loose soil leaving just a layer of rock behind. It may sound like a barren wasteland to you, and I guess it is, however, to me it is beautiful. The amateur archaeologist in me reveled in walking through an area where it was hard to take a step without coming upon some evidence of early man, the ground being covered with lithic (stone) artifacts and workshops.

Not far away is the dry bed of Lake Manix that during the Pleistocene filled the valley below. Above its ancient shoreline were lots of surface workshops dating >25,000 years old (per archaeologist, Fred E. Budinger, Jr., e.g., [PCN #93, Jan-Feb 2025](#)) where thousands of years earlier indigenous peoples (probably *Homo erectus*) set up their lithic sites and made their stone tools.

Lake Manix dried up about 25,000 years ago and when the water left so did the early people populating the area around the lake. All they left behind to tell us they were there was their lithic workshops.

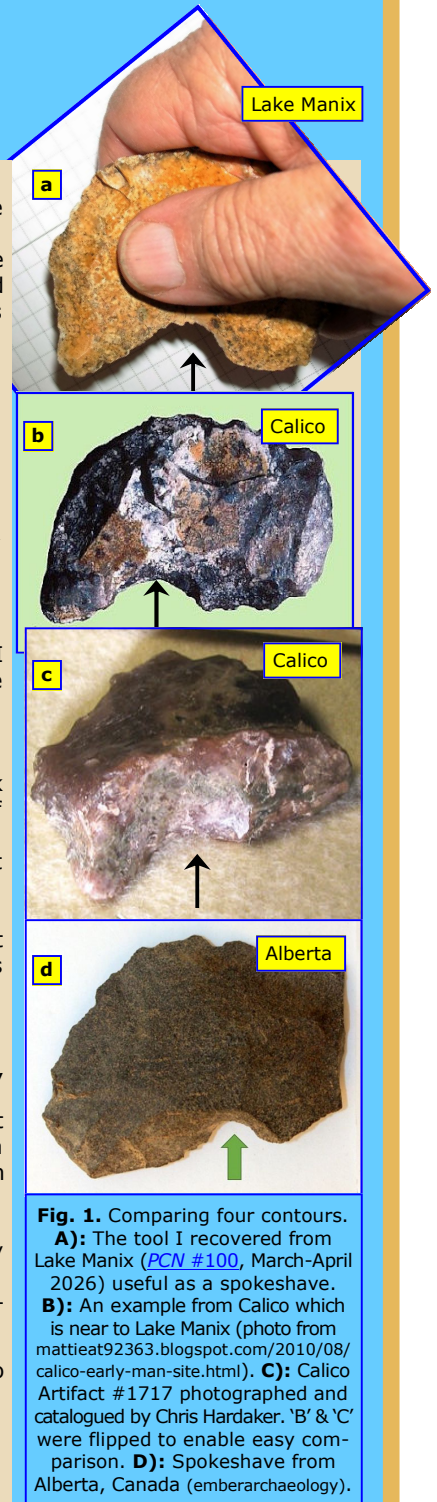
A workshop usually meant a circular scatter of flakes that had been tossed aside. Toward the center of the workshop the quality of the flakes got better. That is one reason I picked up the artifact this

article was inspired by. I like to call it my Swiss Army Knife of the Pleistocene (**Fig. 1a**). Aside from last issue, I wrote about it some years ago, and am revisiting it at our Editor's request as the artifact may well be worth a second look.

When I found it on one of my wanderings through the desert I could see that it had been used and was not just cast aside by its maker. I wasn't sure what I had found, though. I felt confident it was worth my time and efforts to solve that mystery.

Still, it was some time before I had my answer. The Calico site was open to the public. There were restrooms and a small building where we had an exhibit and visitors could walk through and see examples of the sort of stone tools we were finding. I must have glanced at the exhibit a thousand times over the years till one day it finally registered with me that one of those display tools was almost a duplicate of the artifact I had found lying on the desert's surface all those years ago. "So," I told myself, "it wasn't wishful thinking." It wasn't just some debris left at a toolmaking site. It had a real purpose. A Pleistocene man or woman who knew how to shape stone so it would be useful had worked it. It looks very hard to make and must have taken much thought and planning before it was completed.

Like in Fig. 1a, the others also feature what has long been called a *concave scraper* or *notch* and often now called a *spokeshave* with a likely use of smoothing arrows, spears and darts via its rounded shape. **Fig. 1b** is from Calico. It appears a near duplicate to mine. **Fig. 1c** is Calico Artifact #1717 photographed and catalogued by Pleistocene Coalition co-

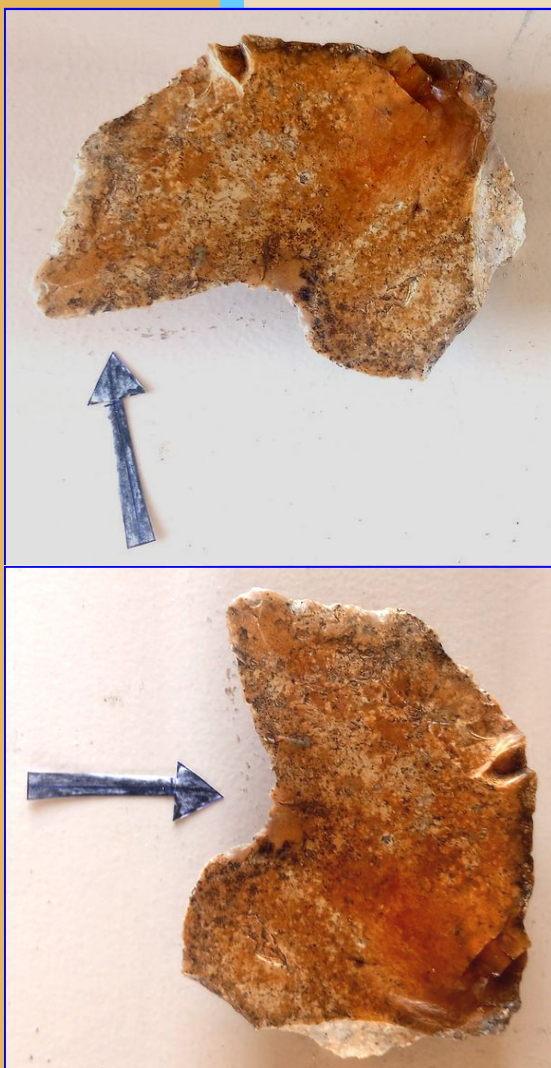


**Fig. 1.** Comparing four contours. **A):** The tool I recovered from Lake Manix ([PCN #100](#), March-April 2026) useful as a spokeshave. **B):** An example from Calico which is near to Lake Manix (photo from [mattieat92363.blogspot.com/2010/08/calico-early-man-site.html](http://mattieat92363.blogspot.com/2010/08/calico-early-man-site.html)). **C):** Calico Artifact #1717 photographed and catalogued by Chris Hardaker. 'B' & 'C' were flipped to enable easy comparison. **D):** Spokeshave from Alberta, Canada ([emberarchaeology.com](http://emberarchaeology.com)).

founder archaeologist Chris Hardaker (MA) dating it c. 200,000 years. **Fig. 1d**, is a spokeshave from Calgary, Alberta, CA, 8–10,000 years old.

> [Cont. on page 7](#)

## Multi-purpose Paleolithic tools of Alberta and California (cont.)



**Fig. 2.** Two closer views of what appear to be the sharpened tip edges (**Top**) and the apparent spokeshave notch or concave scraper (**Bottom**) of my multi-purpose tool from Pleistocene Lake Manix. Calico is not known for stone points though Lake Manix has them. However, more important is that many Paleolithic cultures around the world especially in North America are well known to have made their spear and arrow points *not out of stone but out of wood* which rapidly biodegrades and disappears causing many interpreters to miss the preservation bias suggesting these early people didn't have points. In fact, the *foreshaft* (the point) is *often made out of a heavy wood instead of stone*. This makes spokeshaves evidence that, while not preserved, Calico and Manix likely had spears and possibly arrows as well. Photos by Tom Baldwin, May 2026.

**Fig. 2** shows two closer views of my Lake Manix artifact's current main points of interest. I call it my Swiss Army Knife of the Pleistocene because it has multiple uses just as the knife carried by a Swiss soldier.

**First**, it has been knapped so

that it fits quite comfortably in the hand (see again Fig. 1a). Working long hours, one wants a tool that lends itself to being held in the knapper's hand.

**Second**, as noted above, the tool features an implement called a *concave scraper* (see two views in Fig. 2). This would be very important to the early people that called Lake Manix home. Limited points have been found among the stone tools they produced suggesting they used wooden arrow or spear tips and perhaps fire hardened. A wooden shaft without a heavy stone tip would not fly as true as one with a stone tip. For that reason the shaft had to be as smooth as possible or game might get away. The concave portion of the tool I found being rounded would lend itself to making the arrow or spear shaft smooth without knots. And I might add it would be useful in stripping meat from bones as well. It is important to note that many Paleolithic cultures around the world, especially in North America, are well known to have made their spear and arrow points *not out of stone but out of wood* which rapidly biodegrades and disappears often causing some interpreters to miss the preservation bias assuming these early people simply didn't have points. In fact, the *foreshaft* (the point) is *often made out of a heavy wood instead of stone*. This means that even if such points are not preserved spokeshaves may be the only surviving evidence the people of Calico and Manix had spears, darts and even arrows.

**Third**, the tool I found has a sharpened tip which would give it another use (again Fig. 2) as a drill. Need a hole for a strap to fit through on some leather work? This stone drill is perfect for making those holes. The technical name for such a tool is a *burin*.

**Fourth**, It has a flat, sharpened area next to the burin portion of the tool that could be used like a chisel. I am not aware of the technical name for such a use of the tool. All in all, what I found is a good

multi-purpose tool that an early man or woman could put to use in making someone's life easier.

A few spokeshave examples are pictured. The fact that three are from the Calico Early Man Site region is significant. They are too complex to occur naturally. They must have been made by very skilled flintknappers and were *not* formed in a lake, streambed or mudflow despite the fact of mainstream skeptics pre-committed to calling tools from the region "geofacts." The argument should not raise its ugly head. You have to really stretch to find a way to explain how nature could have made these tools. Also, the one I collected is of likely great age due to its orange color. This coloring is called *desert varnish*. It also comes in black. The orange version is the product of microbes growing on the bottom of rocks lying on the surface, a very slow process that takes many thousands of years to occur.

Once more we find new evidence that man was in the Americas long before the archaeologists care to admit. I wonder what shape the next artifact will take.

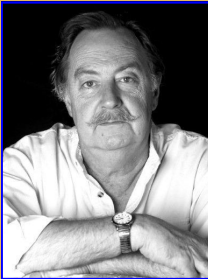
TOM BALDWIN, an award-winning author, educator, and amateur archaeologist living in Utah, also worked as a successful newspaper columnist. He has been a central writer and copy editor for *PCN* since 2010. He was actively involved with the Friends of Calico (maintaining the controversial Early Man Site in Barstow, CA) since the early days when famed anthropologist Louis Leakey was the site's excavation Director (Calico is the only Western Hemisphere site excavated by Leakey). Baldwin's book, *The Evening and the Morning*, is a very well received and entertaining fictional story based on Calico. Apart from being one of the core editors of *PCN*, Baldwin has published over 70 prior *PCN* articles focusing on the intelligence of early humans, including *Homo erectus*, as well as early man in the Americas. Links to all of Baldwin's articles can be found at:

[https://pleistocenecoalition.com/index.htm#tom\\_baldwin](https://pleistocenecoalition.com/index.htm#tom_baldwin)

# The unambiguous hand of man in Ice Age Montana

Part 1 By Richard Dullum, B.A. (Biology)

**"Oddly enough, in considering types of evidence that**



**might suggest civilizations, the researchers did not in-**

In his recently published book, *Extreme Human Antiquity*, (Feb. 2025), Michael Cremo's Introduction begins with a discussion of the 'Silurian Hypothesis,' which I mentioned previously in [PCN #95, p. 7](#). The hypothesis sprang from the researchers' discussion on how to detect signs of industrial civilizations on planets in observable solar systems. Paraphrasing them: "Could the same principle hold on Earth, if we looked into the geological record?" The conclusion they reached was essentially that the dynamic features of the earth are constantly eroding and burying the possible evidence of such existence millions or hundreds of millions of years

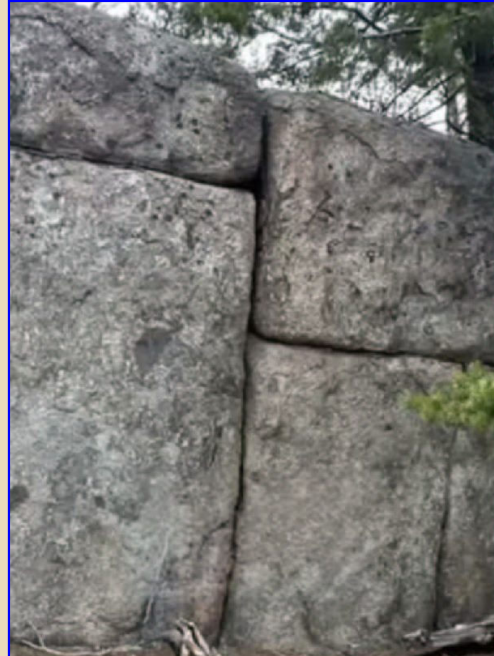
Oddly enough, in considering types of evidence that might suggest civilizations, the researchers did not include evidence left in stone. This is especially unexpected as stone *does* last millions of years, though in a usually highly weathered state.

What about thousands, or hundreds of thousands of years into the past, when *Homo sapiens* roamed all over the planet? Would we not be able to find traces of such civilizations? What artifacts would we expect to exist from those time periods, and what have we already found?

Fossil bones and stone artifacts, such as simple tools withstand those time periods, marked by known geological strata and datable volcanic deposits. If humans were building with stone in deep geologic time, could we not expect to find such remnants, seeing we do find stone tools left by less complex societies?

For three years, I have been reporting on discoveries made in North America that show what are quite possibly traces of a long-vanished human civilization which was present (by default) at the

time of the Pleistocene Era. These discoveries are seen in



**Fig. 1.** A five-block section of Sage Wall featuring staggered joinery of squared blocks, a possible though unlikely natural feature. Photo: Michael Collins.



**Fig. 2. Top:** Seven cup-marks in a highly eroded dolerite slab lying near Sage Wall. **Bottom:** A possible drill mark on top of a Sage Wall boulder. Photos: Michael Collins.

**clude evidence left in stone."**

past and only minute traces of artifacts would be possible to detect, provided we knew where to look.

worked, hard stone remnants that would be expected to survive through hundreds of thousands of years of natural erosive and geologic processes, when such a civilization would have been extant.

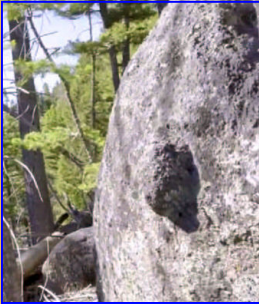
### The Sage Wall

A massive, straight, and nearly vertical 25' high (above ground level) megalithic granite wall exists in Southwest Montana that is celestially aligned featuring staggered and squared blocks (**Fig. 1**). Possible drill holes, cup-marks, gouges, and scoop-marks are seen in the blocks as well as in blocks scattered around the wall (e.g., see **Fig. 2**) as well as other enigmatic features colloquially referred to as

> [Cont. on page 9](#)

# The unambiguous hand of man in Ice Age Montana (cont.)

## "These clear alterations



**Fig. 3.** One of many stony knobby projections on blocks on and near Sage Wall. Photo: Michael Collins.

## attest to the hand of man on the very hard granitic highly magnetic dolerite."

"knobs" (e.g., **Fig. 3**). See especially also [PCN #86 \(Nov-Dec 2023\) Fig. 4](#).

These clear alterations attest to the hand of man on the very hard granitic, highly magnetic dolerite, which is extremely non-porous and resistant to normal weathering processes. This is a type of stone that does not possess natural straight fracture lines; it can only assume the shape of a squared block under intentional working.

One can explore Boulder Batholith and find the Pipestone Walls, where rounded massive blocks show straight vertical and horizontal lines running cross-wise, like a checkerboard, in the stone. Explaining such features geologically would include that they were made when the batholith was under the surface of the ground, still hot and subject to the action of ground water working its way down through the covering soils and debitage lying over the batholith before it was exposed to the

sured columnar appearance of the batholith currently projecting out of the Montana ground,

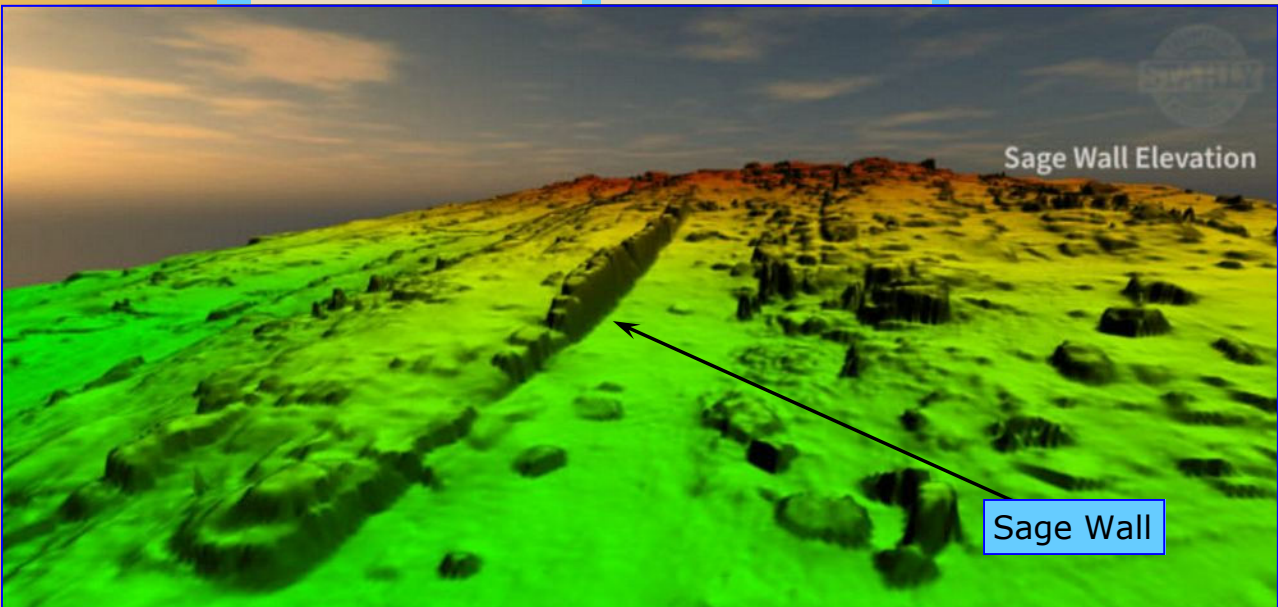


**Fig. 4.** Polygonal shaped-to-fit Wall section, opposite Sage Wall on a ruined section. It's what's holding up the path in front of Sage Wall, as a retaining wall. Photo by Will Brown.

as it eroded out of its confined crusty environment, which, forming at 73–78 MyaBP, was thrust up with the nascent formation of the Pacific coastline, then at the Idaho-Montana border. The region remains seismically active due to its location on active faults, which would have toppled many spires as they were exposed to greater heights above ground by ero-

sites worldwide. I featured this section of wall in [PCN #86 \(link above\)](#). If it were a

natural wall, such as a volcanic dike, there would not be one part of it that appears fitted; pink granite polygonal blocks surrounded by dolerite blocks, all shaped to interlock together that cannot possibly be natural. Additionally, as many as six or eight walls, parallel to the Sage Wall, laid block on block are found up the grade from the Sage



**Fig. 5.** Sage Wall 3D LiDAR elevation from C. Borton and L. Welsh 2025. Arrow and text added [PCN#97](#). Multiple parallel tops of ruined walls.

surface by erosion over millennia or perhaps millions of years.

Very hot granitic magma of the underground batholith contracted, which caused the fis-

sion of the soils over the batholith through millions of years.

Many of the stones of Sage Wall are polygonal, e.g., **Fig. 4**, similar to studied megalithic

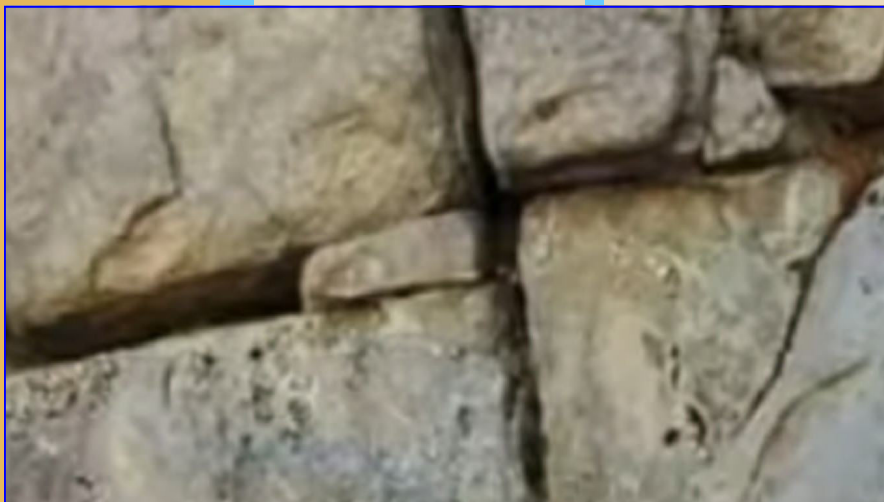
Wall, revealed by LiDAR scans (**Fig. 5**), continuing up the 16° slope toward the summit.

> [Cont. on page 10](#)

## The unambiguous hand of man in Ice Age Montana (cont.)

To my mind, the Sage Wall site begins to appear as a

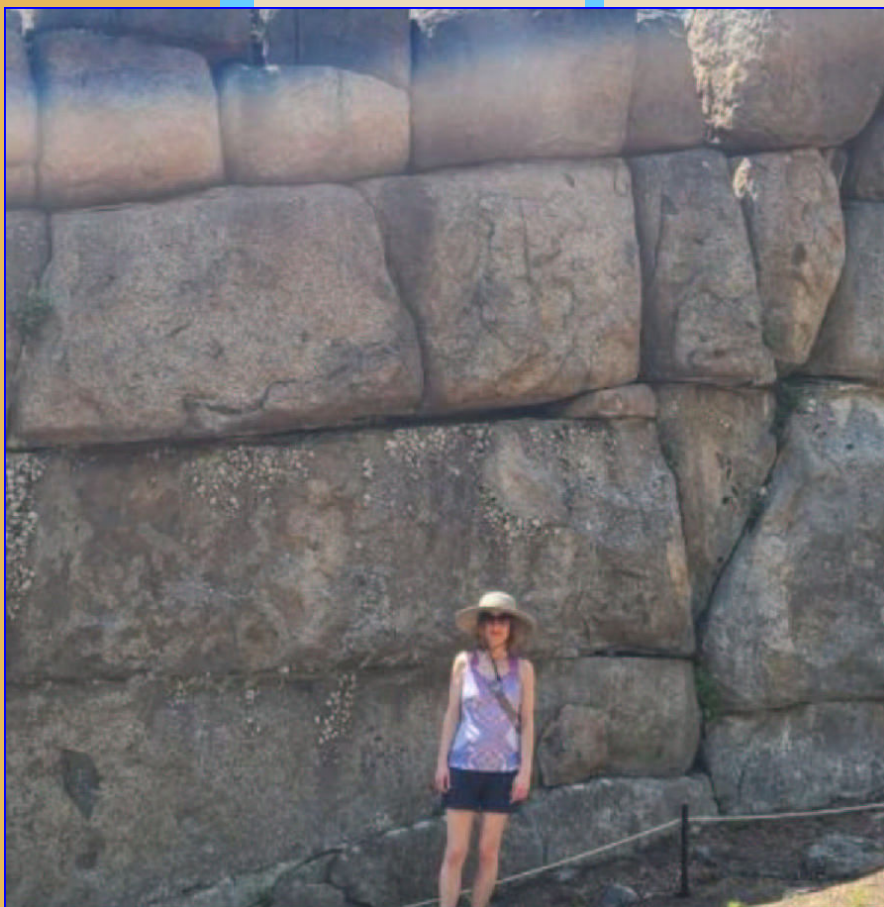
Another man-made feature of Sage Wall is glaringly



**Fig. 6.** A *shim* neatly placed near the largest block in Sage Wall. See its *context* in Fig. 7.

complex structure, function unknown, the remains of which we see here and now.

apparent. It is a "shim," a small rock that has been inserted into the wall with a



**Fig. 7.** The *shim* in context with pattern of horizontal lines on the Wall above. Photo by Julie Ryder.

clear leveling intent almost beyond refute (**Fig. 6**). With a straight edge at the joint on the right, and an eroded rounded opposite edge running under the block, it's clearly not part of either the block on top of it or the block below it. This is near the largest block in the Wall, seen here above and to the left of the unnamed tourist (**Fig. 7**). It also clearly seems to be wedge-shaped as it goes into the wall. I propose this feature maintains the more or less horizontal line of the 6-block course above it, plainly visible from a wider view. I also propose that the arrangement was done with an aesthetic purpose in mind, in other words, to keep the lines as straight as possible along the wall. If not for the shim's adjusting effect, the line of blocks above it would sag downward in the course above.

---

—Continued in Part 2: Dolmens

---

RICHARD DULLUM, retired as a surgical R.N. working in a large O.R. for the past 30 years, is a researcher in early human prehistory and culture. He is also a Vietnam veteran with a B.A. in Biology. Dullum has written or co-written over 60 articles for *PCN* since 2009 and is also one of *PCN*'s copy editors. All of Dullum's articles in *PCN* can be found at the following link:

[https://pleistocenecoalition.com/index.htm#Dullum\\_and\\_Lynch](https://pleistocenecoalition.com/index.htm#Dullum_and_Lynch)

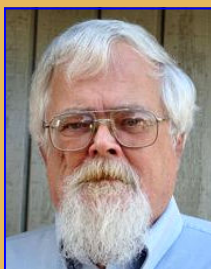
# Legacy of Calico Early Man Site Archaeological Project

## Part 9, Conclusion and References

By Fred E. Budinger, Jr. Budinger & Associates,  
San Bernardino, CA

Continuing from  
[Part 8 in PCN #100](#)  
(March-April 2026)...

**"The Calico site is a lithic workshop and**



**quarry which has been dated to more than 200,000 years ago by uranium series dating and more than 198,000 years ago by beryllium-10 cosmogenic dating."**

**Note:** The long list of references is for the entire series.

### The Bassett Point Site

During geoarchaeological investigations of the Manix Formation at the Bassett Point site, a modified chalcedony specimen with the prominent force bulb, radial force lines, step-flaking, and regular space unit facial modification was found in situ in the uppermost part of Lower Member B of the Manix Formation (Jefferson 1985B) at an elevation of 5 m topographically lower than the base of the Long Canyon Ash (Budinger 1992, 2000). The Long Canyon Ash, an airfall tephra erupted from the Kern Plateau in the southern Sierra Nevada, has been dated to  $185 \pm 50$  ka ago (Bacon and Duffield 1981; Izett 1981; San-Wojciki et al. 1984).

Later work at the Bassett Point site yielded 21 specimens exhibiting edge and/or face modification of probable cultural origin. Most of the Bassett Point specimens exhibit unifacial flaking. A few show alternate bifacial edge flaking. Edge modification is localized on fortuitously shaped clasts, especially ones with natural concavities along their edges. Such concavities were sometimes worked by percussion flaking into concave or hollow scraper edges. All of the specimens exhibit fluvial abrasion indicative of transport, possibly from as far as the vicinity of the Calico Site, some 16 km upstream.

### Summary and Conclusion

In summary and conclusion, this article has outlined work accomplished at

and near the Calico Early Man Archaeological site (CA-SBR-2102) and the Bassett Point site in the central Mojave Desert of southern California. The Calico site is a lithic workshop and quarry which has been dated to more than 200,000 years ago by uranium series dating and more than 198,000 years ago by beryllium-10 cosmogenic dating.

Lithic artifacts exhibiting significant fluvial abrasion have been found at the Bassett Point site, approximately 10 miles east of Calico. These artifacts were found 5 m beneath the  $185,000 \pm 50,000$ -year-old Long Canyon Ash and exceed that age. At the Calico site, younger lithic artifacts have been found in a place that had been eroded and subsequently infilled. Sediment thermoluminescence dating has indicated an age of  $14,400 \pm 2,200$  years.

Large, crudely flaked bifaces and large scrapers have been found in the hills at and near the Calico site. These have been attributed to the Lake Manix Lithic Industry and are hypothesized to be older than 25,000 years given that they were found above the 534 m (1,780 feet) contour, the shoreline of the last stand of Pleistocene Lake Manix.

The prehistoric archaeological record of the Manix Basin (lower Mojave River Valley) has the greatest time depth in the United States. The valley also has

the usual Holocene archaeological evidence which has not been discussed here.

### References

- Alsozatai-Petheo, J. A. 1975. *The East Rim Site, California (SBCM 1803): An Early Western Lithic Co-tradition*. Master's thesis, Eastern New Mexico University, Portales, New Mexico.
- Bacon, Charles R., and Wendell A. Duffield. 1981. Late Cenozoic Rhyolite of the Kern Plateau, Southern Sierra Nevada. *American Journal of Science* 281:1-34.
- Barnes, Alfred S. 1939. The Differences Between Natural and Human Flaking of Prehistoric Flint Implements. *American Anthropologist* 41:99-112.
- Binning, Jeanne D., Roderick S. Brown, Norman Meek, and Edward B. Weil. 1986. *Intermountain Power Project (IPP): The Cultural Resources Study of the Ground Electrode Facility at Coyote Lake, San Bernardino County, California*. Report on file at the Department of Water and Power, Los Angeles, California.
- Bischoff, James L., Roy J. Shlemon, T. L. Ku, Ruth D. Simpson, Robert J. Rosenbauer, and Fred E. Budinger, Jr. 1981. Uranium-Series and Soils-Geomorphological Dating of the Calico Archaeological Site. *Geology* 9 (12): 576-82.
- Budinger, Fred E., Jr. 1983. Evidence for Pleistocene Man in America: The Calico Early Man Site, San Bernardino County, California. *California Geology* 36(4):75-82.
- 1992. *Targeting Early Man Sites in the Western United States: An Assessment of the Manix Type Section, Central Mojave Desert, California*. Master's thesis, California State University, San Bernardino.

> [Cont. on page 12](#)

## Legacy of Calico Early Man Site Archaeological Project (cont.)

**"At the Bassett Point site, a modified chalcedony specimen with the prominent force bulb... was found... topographically lower than the base of the Long Canyon Ash... an airfall tephra erupted from the Kern Plateau in the southern Sierra Nevada... dated to 185 ± 50 ka ago."**

—2000. Modified Lithic Specimens from the Lower Member B of the Manix Type Section, Central Mojave Desert, California. *Proceedings of the Society for California Archaeology*, pp. 244–54.

—2004. Middle- and Late-Pleistocene Archaeology of the Manix Basin, San Bernardino County, California. In *New Perspectives on the First Peopling of North America*, edited by Bradley Lepper and Robson Bonnichsen, pp. 13–23. Center for the Study of the First Americans, Texas A&M University, College Station, Texas.

Budinger, Fred E., Jr., and Ruth D. Simpson. 1985. Evidence for Middle and Late Pleistocene Man in the Central Mojave Desert of Southern California. In *Woman, Poet, Scientist: Essays in the New World Anthropology Honoring Dr. Emma Louise Davis*, compiled and edited by the Great Basin Foundation, pp. 16–36. Los Altos, CA: Ballena Press.

Debenham, N. 1998. *Thermoluminescence Dating of Sediment from the Calico Site (California) (CAL1)*. Quaternary TL surveys, Nottingham, United Kingdom.

—1999 *Thermoluminescence Dating of Sediment from the Calico Site (California) (CAL2)*. Quaternary TL surveys, Nottingham, United Kingdom.

Duvall, James G., and William T. Venner. 1979. A Statistical Analysis of the Lithics from the Calico Site (SBCM 1500A), California. *Journal of Field Archaeology* 6(4):455–62.

Haynes, Vance. 1973. The Calico Site: Artifacts or Geofacts? *Science* 181:305–10.

Izett, Glen A. 1981. Volcanic Ash Beds: Recorders of Upper Cenozoic Silicic Pyroclastic Volcanism in the Western United States. *Journal of Geophysical Research* 86(B 11):10,200–10,222.

Jefferson, George T. 1968. *The Camp Cady Local Fauna from Pleistocene Lake Manix, Mojave Desert, California*. Master's thesis, University of California, Riverside.

—1985a. Review of the Late Pleistocene Avifauna from Lake Manix, Central Mojave Desert, California. History Museum of Los Angeles, *Contributions in Science* 362 :1–13.

—1985b. Stratigraphy and Geologic History of the Pleistocene Manix Formation, Central Mojave Desert, California. In *Cajon Pass to Manix Lake; Geologic Investigations Along Interstate 15*, compiled by Robert E. Reynolds, pp. 157–69. San Bernardino County Museum, Redlands, California.

—1987. The Camp Cady Local Fauna: Paleoenvironment of the Lake Manix Basin. *San Bernardino County Museum Association Quarterly* 34(3&4):1–35.

—1989. Late Pleistocene and Earliest Holocene Fossil Localities and Vertebrate Taxa from the Western Mojave Desert. In *The West-central Mojave Desert: Quaternary Studies between Kramer and Afton Canyon*, edited by Robert E. Reynolds, pp. 27–40, Special Publication, San Bernardino County Museum Association, Redlands, California.

—1991. A Catalog of Late Quaternary Vertebrates from California: Part One, Nonmarine Lower Vertebrate and Avian Taxa. *Natural History Museum of Los Angeles County, Technical Reports, No. 5*.

Owen, Lewis A., Teresa Davis, Marc W. Caffee, Fred Budinger, and David Nash. 2011. Surface Ages and Rates of Erosion at the Calico Archaeological Site in the Mojave Desert, Southern California. *Geomorphology* 125:4050.

Patterson, Leland W. 1983. Criteria for Determining Attributes of Man-Made Lithics. *Journal of Field Archaeology* 10:297–307.

Payen, Louis A. 1982a. Artifacts or Geofacts at Calico. Application of the Barnes Test. In *Peopling of the New World*, edited by Jonathon E. Ericson, R. E. Taylor, and Rainer Berger, pp. 193–201. Los Altos, CA: Ballena Press.

—1982b *The Pre-Clovis of North America: Temporal and Artifactual Evidence*. Ph.D. dissertation, University of California, Riverside.

Reheis, Marith C., David M. Miller, James B. Paces, Charles G. Oviatt, Joanna R. Redwine, Darrell S. Kaufman, Jordan Bright, and Elmira Wan. 2011. Geomorphology of Lake Manix, Mojave Desert, California: Evolution of a Complex

Terminal Lake Basin. *Geomorphology* 392, November 2021, 107901.

Sarna-Wojcicki, Andrei M., Harry R. Bowman, Charles E. Meyer, Paul C. Russell, Marta J. Woodward, Gail McCoy, J. J. Rowe, Jr., P. A. Baedeker, Frank Asaro, and Helen Michael. 1984. *Chemical Analyses, Correlations, and Ages of Upper Pliocene and Pleistocene Ash Layers of East Central and Southern California*. U.S. Geological Survey Professional Paper 1293.

Schuilung, Walter C. (editor). 1972. Pleistocene Man at Calico. San Bernardino County Museum Association, Redlands, California.

1979 Pleistocene Man at Calico (2nd edition). San Bernardino County Museum Association, Redlands, California.

Shlemon, Roy J., and Fred E. Budinger, Jr. 1990. The Archaeological Geology of the Calico Site, Mojave Desert, California. In *Archaeological Geology of North America*, edited by Norman P. Lasker and Jack Donahue, pp. 301–313. Centennial Special Volume 4, Geological Society of America, Boulder, Colorado.

Simpson, Ruth D. 1960. Archaeological Survey of the Eastern Calico Mountains. *The Masterkey* 34(1):25–35.

—1976. The Manix Lake Industry: Early Lithic Tradition or Workshop Refuse? A Commentary on W. Glennon's Article. *Journal of New World Archaeology* 1(1):63–66.

—1978. The Calico Mountains Archaeological Site. In *Early Man in America from a Circumpacific Perspective*, edited by Alan L. Brian, pp. 218–20. Department of Anthropology, University of Alberta, Occasional Papers, No. 1.

—1980. The Calico Mountains Site: Pleistocene Archaeology and the Mojave Desert. In *Early Native Americans: Prehistoric Demography, Economy, and Technology*, edited by David L. Browman, pp. 7–20. Mouton, The Hague.

—1982. The Calico Mountains Archaeological Project: A Pro-

> [Cont. on page 13](#)

## Legacy of Calico Early Man Site Archaeological Project (cont.)

**"Later work at the Bassett Point site yielded 21 specimens exhibiting edge and/or face modification of probable cultural origin."**

gress Report. In *Peopling of the New World*, edited by Jonathan Erickson, R. E. Taylor, Rainer Berger, pp. 181-92. Palo Alto, CA: Ballena Press.

—1999 An Introduction to the Calico Early Man Lithic Assemblage. *San Bernardino County Museum Association Quarterly* 46(4).

Simpson, Ruth D., Leland W. Patterson, and Clay A. Singer. 1986. Lithic Technology of the Calico Mountains Site, Southern California. In *New Evidence for the Pleistocene Peopling of the Americas*, edited by Alan L. Brian, pp. 89-105. Center for the Study of Early Man, University of Maine, Orono.

Singer, Clay A. 1979. A Preliminary Report on the Analysis of Calico Lithics. In *Pleistocene Man at Calico*, edited by Walter C. Schuiling, pp. 55-66. *San Bernardino County Museum Association Quarterly* 26 (4).

Taylor, R. E., and Louis A. Payen. 1979. The Role of Archaeometry in American Archaeology: Approaches to the Evaluation of the Antiquity of *Homo sapiens* in California. In *Advances in Archaeological Method and Theory, Vol. 2*, edited by Michael B. Schiffer, pp. 239-283. New York, NY: Academic Press.

Wilmsen, Edwin H. 1970. *Lithic Analysis and Cultural Inference: A Paleoindian Case*. Tucson, AZ: University of Arizona Press.

FRED E. BUDINGER, JR., MA, RPA, is Senior Archaeologist at Budinger & Associates and former Curator (1974-1986) and Project Director (2000-2008) at Calico Early Man Site. Over the past several years he has raised concerns and discussed in detail

graph selected Calico specimens for an up-coming book was given the following response: "The Calico collection is no longer available for study." Budinger continues his efforts to keep Calico site from being buried by popular archaeology as have other sites such as Hueyatlaaco.



**From PCN #32:** The author as Project Director of Calico Early Man Site measuring artifacts—such as those seen in this series—in the wall of Master Pit I. Photo: T. Oberlander.

the threatened Calico artifacts and the gradual and deliberate destruction of the site in several articles including [Protecting Calico](#) (PCN #17, May-June 2012), [Saving Calico Early Man Site](#) (2012, same issue), and [The Calico Legacies, December 2014](#) (PCN #32, Nov-Dec 2014). He has also provided several brief news items on the degraded state of U.S. archaeology and lack of preservation efforts and the subject of truth in science including [An important update on the state of affairs at Calico Early Man Site](#) (PCN #39, Jan-Feb 2016). In that report Budinger encapsulated current "professional" rulings: 1.) "No [Calico] artifacts can be seen by anybody," and 2.) A respected book author (Bipoints Before Clovis) who wrote to Director Schroth about flying out to California from Virginia to photo-

# Debunking evolutionary propaganda, Part 10

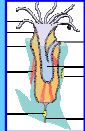
## The inconvenient facts of living fossils: Bryozoa

A lifelong reader of textbooks in every field exposes “thousands” of examples of false statements of fact and other propaganda techniques easily spotted in anthropology, biology, and paleontology textbooks

By John Feliks

Reprint from PCN #32, March-April 2015. This is Part 10 of 21 in reverse to give readers the facts of the fossil record first.

**Fig. 1.** The basic anatomy of an individual bryozoan called a *zooid* (Wikimedia Commons). This little creature that lives in tiny holes in bryozoan colonies (Figs. 2-5) has baffled biologists since the 16th Century. Yet biologists like to refer to bryozoans as “simple.” If, after 150 years of Darwinism and \$500,000 grants to study them one doesn’t have an explanation for the simplest organisms (sponges, corals, bryozoans, brachiopods, molluscs, echinoderms, etc.), then how can one imagine to explain human origins?



The title of the above paper might make readers imagine that science is on its way to explaining bryozoans in evolutionary terms; but such is not the case. Although paleontology and biology consider bryozoans—or moss animals as they are popularly known (Figs. 1-5)—to be primitive, simple organisms that evolved like everything else in the Darwinist worldview, the actual real-time physical facts of the fossil record tell a very different story. What the record actually shows is that after nearly 500 million years bryozoans are still bryozoans—just like when they first appeared. They didn’t evolve from anything else and they didn’t evolve into anything else.

The quote itself may seem innocuous but it uses two standard diversions that prevent readers from considering bryozoans objectively:

1.) Not “little is known,” but truly nothing is known about the so-called evolutionary history of bryozoans. The

**“Bryozoa is one of the most puzzling phyla in the animal kingdom and little is known about their evolutionary history.”**

—Fuchs, J., M. et al. 2009. The first comprehensive molecular phylogeny of Bryozoa (Ectoprocta) based on combined analyses of nuclear and mitochondrial genes. *Molecular Phylogenetics and Evolution* 52 (1): 225.

The date ranges in this article are from *Fossilworks: Gateway to the Paleobiology Database*, Macquarie Univ. Dept. of Biological Sciences, Sydney, Australia—assembled by hundreds of paleontologists internationally; *Fossilid.info*, Baltic University, Paleobiodiversity in Baltoscandia; and several other sources.

For Cheilostomata see *Membranipora* in Fig. 4.

Genus, etc.	Current living fossils	Range	Fossils recovered in situ by the author
<b>Bryozoa</b> <i>Phylum. No evolutionary links</i>	<b>Unchanged 480 million years</b> Ordovician–Recent; 480.0 MYA–Present	Worldwide	 Colony 7/8" wide (2.3 cm) <b>Monticulipora</b> colony encrusting <b>Platystrophia</b> brachiopod; Trepostomida; Stenolaemata class; Ordovician; Big Bone Lick, Kentucky
<b>Stenolaemata</b> <i>Class. No evolutionary links</i>	<b>Unchanged 480 million years</b> Ordovician–Recent; 480.0 MYA–Present	Worldwide	 1 3/4" wide (4.4 cm) <b>Prasopora</b> dome-shaped colony showing internal structure; Order Trepostomida; Class Stenolaemata; Ordovician; Chandler Falls, U.P., MI
<b>Stenolaemata</b> <i>Class. No evolutionary links</i>	<b>Unchanged 480 million years</b> Ordovician–Recent; 480.0 MYA–Present	Worldwide	 1 1/4" wide (3.1 cm) <b>Prasopora</b> , diff. specimen; Ordovician; domed colony from Dolgeville, New York
<b>Cyclostomata</b> <i>Order. No evolutionary links</i>	<b>Unchanged 480 million years</b> Ordovician–Recent; 480.0 MYA–Present	Worldwide	 Colony 3/4" wide (1.9 cm) <b>Hederella</b> colony, Cyclostomata, on <b>Protopleptostrophia</b> (a delicate brachiopod with a constantly changing name; Name-changing is part of how Darwinism “conceals” continuity.); Stenolaemata class; Devonian; Medusa Quarry, Sylvania, OH
<b>Gymnolaemata</b> <i>Class. No evolutionary links</i>	<b>Unchanged 465 million years</b> Ordovician–Recent; 465.0 MYA–Present	Worldwide	 Left image 7/16" tall (1.2 cm) <b>Sulcoretepora</b> ( <i>Flustra parallela</i> ); Cryptostomata; Stenolaemata; Devonian; Medusa Quarry, OH; similar, Sibley Quarry, Trenton, MI; Modern <b>Flustra</b> ; Gymnolaemata
<b>Ctenostomata</b> <i>Order. No evolutionary links</i>	<b>Unchanged 465 million years</b> Ordovician–Recent; 465.0 MYA–Present	Worldwide	 What living bryozoans look like. Image: Wikimedia Commons.
<b>Cheilostomata</b> <i>Order. No evolutionary links</i>	<b>Unchanged 172 million years</b> Jurassic–Recent; 172.0 MYA–Present	Worldwide	For Cheilostomata see <b>Membranipora</b> in Fig. 4.

**Fig. 2.** A few examples of “thousands” of classes, orders, families, genera (presently bryozoans) showing *no evolution* in hundreds of millions of years. Remember, it’s easy to sell evolutionism when you block knowledge and facts from the public.

> [Cont. on page 15](#)

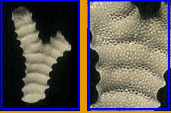


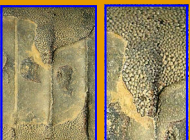

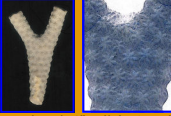
\*Links to the prior parts in this reverse reprint series: [Part 11](#), [Part 12](#), [Part 13](#), [Part 14](#), [Part 15](#), [Part 16](#), [Part 17](#), [Part 18](#), [Part 19](#), [Part 20](#), [Part 21](#).\*

# The inconvenient facts of living fossils: *Bryozoa* (cont.)

problem, as in all other such papers, is that evolution is presented as a preconceived

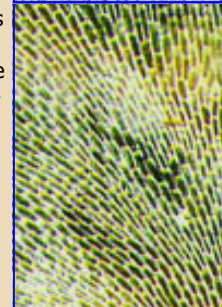
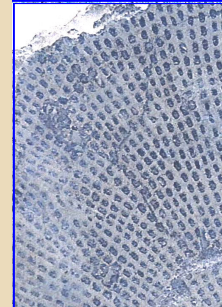
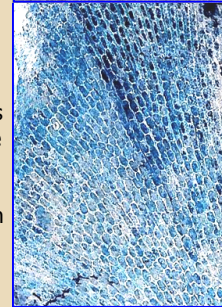
'given' despite the fact that not a single group of organisms has been established in

depends upon the rhetoric used which conceals what the claims actually are. The

Genus, etc.	Former living fossils	Range	Fossils recovered <i>in situ</i> by the author
<b>Trepostomida</b> <i>Order. No evolutionary links</i>	<b>Unchanged</b> <b>256 million years</b> Ordovician–Triassic; 488.3–232.0 MYA	Worldwide	 1 1/16" tall (1.8 cm) <b>Parvohallopora rugosa</b> ; Trepostomida colony; Class Stenolaemata; Ordovician; Middletown, Butler Co., Ohio
<b>Trepostomida</b> <i>Order. No evolutionary links</i>	<b>Unchanged</b> <b>256 million years</b> Ordovician–Triassic; 488.3–232.0 MYA	Worldwide	 Portion shown 1 3/8" tall (3.5 cm) <b>Batostoma</b> ; Trepostomida colony; Class Stenolaemata; Ordovician; Middletown, Butler Co., Ohio
<b>Trepostomida</b> <i>Order. No evolutionary links</i>	<b>Unchanged</b> <b>256 million years</b> Ordovician–Triassic; 488.3–232.0 MYA	Worldwide	 1/2" wide (1.2 cm) <b>Trepostomida colony</b> with complete attachment base; Ordovician; Little Bay de Noc, Escanaba, U.P., Michigan
<b>Trepostomida</b> <i>Order. No evolutionary links</i>	<b>Unchanged</b> <b>256 million years</b> Ordovician–Triassic; 488.3–232.0 MYA	Worldwide	 Left image 9/16" wide (1.2 cm) Trepostome colony, perhaps <b>Spatiopora</b> (Class Stenolaemata) encrusting a <b>Treptoceras</b> nautiloid cephalopod shell; Ordovician; Big Bone Lick, Boone Co., Kentucky
<b>Cystoporata</b> <i>Order. No evolutionary links</i>	<b>Unchanged</b> <b>236 million years</b> Ordovician–Permian; 488.3–252.3 MYA	Worldwide	 View 9/16" wide (1.5 cm) <b>Fistulipora</b> colony; Cystoporata order; class Stenolaemata; Silurian; Waldron Quarry, Indiana
<b>Cystoporata</b> <i>Order. No evolutionary links</i>	<b>Unchanged</b> <b>236 million years</b> Ordovician–Permian; 488.3–252.3 MYA	Worldwide	 Detail 1 1/16" tall (1.3 cm) <b>L. Constellaria</b> ; Cystoporata colony; Class Stenolaemata; Ordovician; Butler County, Ohio

**Fig. 3.** Former living fossils. The evolution community is not objective regarding fossils. Once in the fossil record every taxon remains as it was until it goes extinct. Examples recovered by the author from formation across the U.S. and Canada over 30-yr. span.

evolutionary terms. It is the same problem now facing U.S. students with Common Core and the Next Generation Science Standards where the idea is presented as a given through false statements of fact and with no option for students to question it. In reality, evolution is no more a given for bryozoans than it is to assume that modern dog breeds "evolved" from earlier breeds. Modern dogs are not new types of organisms and neither are modern bryozoans. Promotion of the entire belief system



**Fig. 4.** Lacy bryozoans—the basic idea has been around for 500 million years. The variations are no more 'evolutionarily' significant than human races or dog breeds are. **Top-down:** Devonian *Fenestella*, Arkona, Ontario; Mississippian *Fenestella* (Rogers, Arkansas); Pennsylvanian *Fenestella* (Paris, Illinois); Recent living *Membranipora* (USGS).

seamless switching back and forth between the level of claims being made is a necessary part of selling the theory as a fact. 2.) Another misleading implication is that bryozoans are a uniquely puzzling group. This too is a standard technique used in the evolution community. The idea is to imply that evolutionary histories for organisms other than the ones you are currently talking about are established, which, again, is not true. Once one starts looking at evolutionary literature critically, one discovers that the

> [Cont. on page 16](#)

# The inconvenient facts of living fossils: *Bryozoa* (cont.)

same report as given for bryozoans is given for all organisms—with the fossil

record always being the main snag (see, for instance, Part 9, [Echinodermata](#),

PCN#31, Sept-Oct 2014).



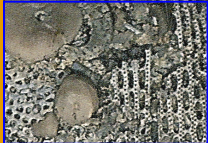

Despite what the fossil record says, evolution is being increasingly and aggressively promoted as fact with more and more popular scientists using propaganda techniques to get people to accept it or risk being labeled with all manner of names. No sciences except biology, paleontology, and anthropology—the three fields that put all their eggs into the evolutionary basket and now have tens of thousands of careers at stake—would ever claim as fact an idea that was not supported by the primary evidence. This is especially true if that evidence is a superbly

kept chronological record. Even Darwin knew that the fossil record did not support his theory and plainly stated so in the *Origin of Species* (1859). Darwin's only hope was that the fossil record would prove to be a record "imperfectly kept."

In light of all these facts, we need to start teaching the fossil record objectively without preconceptions. In science, you don't make up stories focused on unknown players (i.e. ancestors) when you already have the real players right there in front of you. Bryozoans and other invertebrates are represented by trillions and trillions of fossils. That's why Darwinism can't get them to morph into each other and then, somehow, turn themselves into human beings the way it would like them to.

We also need to stop denying students the right to know that evolution is being challenged. Let's not force students to spend their valuable study time absorbing propaganda. Let's see where they go without being coerced and allow them to come to their own conclusions. That's what the true nature of science is; and that's the kind of science we should be teaching in our classrooms.

JOHN FELIKS has specialized in the study of early human cognition for twenty years demonstrating that human cognition does not evolve. Earlier, his focus was on the invertebrate fossil record studying fossils in the field across the U.S. and parts of Canada as well as studying many of the classic texts (*Treatise on Invertebrate Paleontology, Index Fossils of North America*, etc.). With the advent of Common Core and the Next Generation Science Standards now set up through legislation in the U.S. to force evolutionary theory on children as fact, while blocking conflicting evidence, Feliks encourages students to insist that evidence be presented objectively—like in normal science. At present evolution is taught as propaganda with no rigor or accountability.

Genus, etc.	Former living fossils	Range	Fossils recovered in situ by the author
<b>Fenestrata</b> <i>Order. No evolutionary links</i>	<b>Unchanged</b> <b>236 million years</b> Ordovician–Triassic; 488.3–252.3 MYA	Worldwide	 Left image 1 7/8" tall (4.8 cm) <b>Septopora</b> ; Order Fenestrata; Class Stenolaemata; Mississippian; Sulphur, Indiana
<b>Fenestrata</b> <i>Order. No evolutionary links</i>  <i>Archimedes</i> should be a very easy bryozoan to prove an evolutionary appearance due to its unmistakable screw feature; but the fossil record does not show one.	<b>Unchanged</b> <b>236 million years</b> Ordovician–Triassic; 488.3–252.3 MYA	Worldwide	 View 1" tall (2.5 cm) <b>Archimedes</b> central screw portion laying atop disarticulated net-like portions formerly attached (Order Fenestrata; Class Stenolaemata); Mississippian; Sulphur, Indiana
<b>Fenestrata</b> <i>Order. No evolutionary links</i>	<b>Unchanged</b> <b>256 million years</b> Ordovician–Triassic; 488.3–232.0 MYA	Worldwide	 View 3/8" wide (.9 cm) <b>Fenestella</b> colony highly magnified to show the tiny holes that individual bryozoans lived in (Order Fenestrata; Class Stenolaemata); Devonian; Hungry Hollow, Arkona; Ontario, Canada
<b>Cryptostomata</b> <i>Order. No evolutionary links</i>	<b>Unchanged</b> <b>256 million years</b> Ordovician–Triassic; 488.3–232.0 MYA	Worldwide	 Bottom image 5/16" tall (.7 cm) <b>Top-L. Streblotrypa</b> (Cryptostomata; Stenolaemata Class) with <b>Top-R. Phacops</b> trilobite eye; <b>Bottom.</b> Close-up; Devonian; Medusa Quarry, Sylvania, Ohio

**Fig. 5.** One reason that biology, paleontology, and anthropology are able to spread evolutionism without normal scientific restraint is because the public and most scientists have little direct contact with the fossil record.



## The Pleistocene Coalition

Prehistory is about to change

- Learn the real story of our Palaeolithic ancestors—a story about intelligent and innovative people—a story which is unlike that promoted by mainstream science.
- Explore and regain confidence in your own ability to think for yourself regarding human ancestry as a broader range of evidence becomes available to you.
- Join a community not afraid to challenge the status quo. Question with confidence any paradigm promoted as “scientific” that depends upon withholding conflicting evidence from the public in order to appear unchallenged.

**PLEISTOCENE COALITION  
NEWS**, Vol. 18: Issue 3  
(May-June)

© Copyright 2026

### PUBLICATION DETAILS

EDITOR-IN-CHIEF/LAYOUT  
[John Feliks](#)

COPY EDITORS/PROOFS  
[Tom Baldwin](#)  
[Richard Dullum](#)

SPECIALTY EDITORS  
James B. Harrod, Rick Dullum,  
Matt Gatton

Pleistocene Coalition co-founder,  
copy editor and advisor emeritus  
[Virginia Steen-McIntyre](#)

### CONTRIBUTORS to this ISSUE

Tina Wan

Michael Collins

Fred E. Budinger, Jr.

Chris Hardaker†

Julie Ryder

Will Brown

Christopher Borton

Linda Welsh

Richard Dullum

Tom Baldwin

John Feliks

***Pleistocene Coalition  
News* is produced by the  
[Pleistocene Coalition](#)  
bi-monthly  
since **October 2009**.  
Back issues can be found  
near the bottom of the  
**PC** home page.**

To learn more about early  
man in the Pleistocene visit  
our website at

[pleistocenecoalition.com](http://pleistocenecoalition.com)

**The Pleistocene Coalition** celebrated its sixteen-year anniversary September 26, and the anniversary of *Pleistocene Coalition News*, October 25. *PCN* is now in its seventeenth year of challenging mainstream scientific dogma.