



# PLEISTOCENE COALITION NEWS

VOLUME 7, ISSUE 6

NOVEMBER - DECEMBER 2015

## Inside

### PAGE 2

**Bairoil, Wyoming:  
The story of an-  
other American  
site plowed under**

Marilyn Jesmain

### PAGE 4

**Re-establishing  
Moir's Pleistocene-  
age U.K. sites**

Kevin Lynch and  
Richard Dullum

### PAGE 7

**Member news and  
other information**

Sachin Tiwary,  
Ted Oberlander,  
Michael Winkler,  
John Feliks

### PAGE 8

**The controversial  
Brownwood Skull**

David Campbell

### PAGE 10

**Mammoth migrations  
suggest early hu-  
man presence**

Virginia Steen-McIntyre

### PAGE 11

**Oldest Monte Verde  
dates 'ignored' by  
the mainstream**

Chris Hardaker

### PAGE 13

**More on the Utah  
rock art panel sug-  
gesting a mammoth**

Ray Urbaniak

### PAGE 14

**Debunking evo. prop.,  
Part 16: Overview  
of the series so far**

John Feliks

### PAGE 17

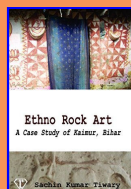
**Pleistocene under-  
ground, Part 1**

Vesna Tenodi

- Challenging the tenets of mainstream scientific agendas -

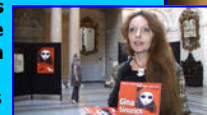


**With revving bulldozers  
breathing down their necks,**  
quick-working contract  
archaeologists often  
barely have enough  
time to throw impor-  
tant finds into bags and  
then get off of incon-  
veniently-discovered  
sites as quickly as  
possible. See stories by  
Marilyn Jesmain, PhD (p. 2),  
and David Campbell (p. 8).



**New book  
on rock art  
by Sachin  
Tiwary, PhD  
(p. 7).**

**The suppression of evidence  
in science is  
not only the  
mainstream  
against chal-  
lenging ideas  
but also  
mainstream against main-  
stream and usually for political  
reasons (see Tenodi, p. 17).**



**Archaeologist Chris Harkaker**  
expounds on the mainstream art  
of ignoring already-established  
relevant evidence of very early  
Americans (p. 11).



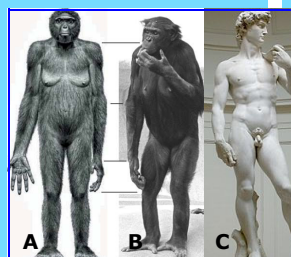
**Engineer and rock art pres-  
ervationist Ray Urbaniak** suggests  
the possibility that stories passed  
down across generations through  
oral tradition might be repre-  
sented in U.S. rock art (p. 13).



**Kevin Lynch and Richard Dullum continue in the footsteps of  
British amateur archaeologist James Reid-Moir** who out-guessed  
the mainstream science community 100 years ago predicting ancient  
Pleistocene man in the U.K. (p. 4)



**Virginia Steen-McIntyre**  
on the presence of mam-  
moths and their likely fellow  
travelers over the Bering  
Strait Land Bridge (p. 10).



**Debunking evolutionary  
propaganda, Part 16.** Over-  
view of the series with quick  
links to Parts 1-15 (p. 14).



**Partially miner-  
alized jawbone**  
from Red River,  
Fannin County,  
Texas, resembling  
the Brownwood  
Skull and found  
just a few coun-  
ties away from  
the Brownwood  
site. See story by  
David Campbell  
(p. 8).

# Bairoil, Wyoming: A potential U.S. site plowed under

By Marilyn Jesmain, PhD, archaeologist



**Fig. 1.** The Bairoil, Wyoming, archaeological site, 1988, location of a human burial discovered during a construction project. We can be seen inside the yellow oval. In the background (upper right) can be seen the giant bulldozer mentioned in the text. Such locations are not the glamorous context people often imagine archaeological sites to be, but it is important cultural work, and contract archaeologists simply try and make the best of the situation.

**"We found remains of at least 5 or more distinct cultures living peacefully side-by-side."**



**Fig. 2.** Rough location of the Bairoil, Wyoming, site.

**From 1984 to 1989, I was a "dig-bum." As a contract archaeologist, I worked in every state from North Dakota to Southern California and from Washington State to Texas and all points in between.**

I eventually ended up in Alaska, where I went back to college to receive my PhD at the age of 69. This was at the University of Alaska Fairbanks, in 1998. I am now 84.

One of my most interesting "digs," if you can call it that, was at Bairoil, Wyoming (**Figs. 1–3**). John and Mavis Greer, whose offices are in Casper, WY, hired me during

the summer of 1988 to work on a site that was rapidly being destroyed due to oil development. I parked my old Airstream travel trailer behind the Caspar Museum, where I volunteered on weekends.

The Bairoil site is in Sweetwater County, Wyoming, 90 miles southwest of Casper. We would drive down every morning to recover what we could before it was destroyed by the massive machinery and oil rigs that were everywhere.

It was crazy; our tools were a large plastic bag and shovel. My partner and I would locate a fire pit and as fast as we could, shovel its contents into the bag all the while a large bulldozer (see Fig. 1 in the upper right) would be poised nearby, revving his engine waiting for us to finish so he could plow it all under.

The town of Bairoil is a small village, population 97 (2000 census), in the middle of a large flat plain surrounded by high mountains at the northeast edge of the Great Divide Basin. It housed the oil workers who were developing the rich deposits under the valley floor. The site had been archaeologically surveyed and cleared years before, but because the surrounding mountains had left a foot or more of deposit, nothing was found and it was cleared for oil development. However, once the surface had been scraped, it proved to be a treasure of information.

Driving into the valley, dirt roads crisscross the entire area. About every quarter mile there was a pole with a gas monitor on top to let you know if there was a dangerous gas leak nearby. The trailer house town stood in

the center of all this, housing families and children, with a school, a post office, and a commissary. Just working there was scary, yet people were living

in the middle of this massive hazard.

I have tried to find a copy of this report to check my memory, but though Greer

> [Cont. on page 3](#)



**Fig. 3.** A closer view of the team at work at the Bairoil, Wyoming site, 1988.



## Bairoil, Wyoming: A U.S. site plowed under (cont.)

**"The point was quickly transported to me up in Casper, where I did the analysis and drawings. I was the site illustrator."**

mentions this, there does not appear to be much information available. It is now over 25 years since I was there, but this is what I remember. The valley apparently served as a trading center for we found remains of at least 5 or more distinct cultures living peacefully side-by-side apparently for the purpose of trade (e.g., **Fig. 4**).

Only one burial was found. It was of a middle-aged male in a fetal position, with no associated artifacts (**Fig. 5**). His remains were carefully excavated and sent to the state office in Cheyenne.

George Frizen was the State archaeologist at the time. During examination, a tiny obsidian point was found wedged in his knee joint. The point was quickly transported to me up in Casper, where I did the analysis and drawings. I was

the site illustrator. All the time this was happening, the

other sites in the Americas which, for one reason or

another, never receive a full and patient treatment. Who knows what else could have been found at the site or how far back it goes.

MARILYN JESMAIN, PhD, is an archaeologist, explorer, and Professor Emeretus at UNM Taos. She has worked at many sites throughout the U.S. from Texas to Alaska. Jesmain also believes she has found the only recorded U.S. menses site. A quickly made walk-through film of the site called *Archaic*

*Women's Menses Site* can be seen on YouTube at the following link:

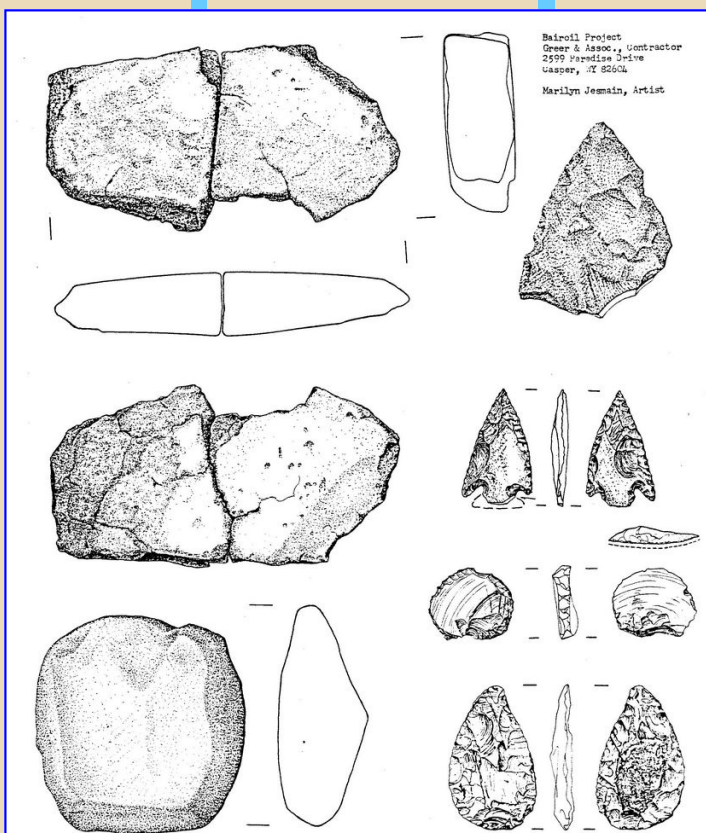
<https://www.youtube.com/watch?v=Ql0TyHKz2-4>

**Editors note:** A very interesting and brief article about the importance of contract archaeologists, *Shovelbums: Inside the world of contract archaeology*, can be seen at

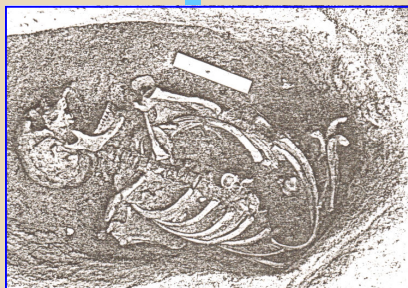
<http://archive.archaeology.org/0803/abstracts/shovelbums.html>

"The archaeologists whose careers are spent digging test pits within view of antsy bulldozer operators and moving from one project to another are all but invisible to the public eye, despite the fact that they are responsible for safeguarding much of the country's heritage."

PCN is interested in hearing from other contract archaeologists as well. This could be an important untapped resource concerning prehistory.



**Fig. 4.** Drawings of some of the artifacts we recovered from the Bairoil, Wyoming site, 1988. Illustrations; Marilyn Jesmain.



**Fig. 5.** The only burial we found was of this middle-aged male. During later examination a tiny obsidian point was discovered wedged in his knee.

local tribes were fighting to get the bones repatriated for burial.

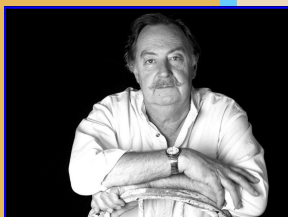
Politics and oil development have

now buried this site forever, but this might possibly have been one of the most important sites in all of North America since so much was found even under such rushed and pressured circumstances. It is like many

# Following Moir along the Norfolk coast at West Runton and Cromer

By Kevin Lynch and Richard Dullum

After reading Michael Cremona's and Richard Thompson's tome, *Forbidden Archeology*, and becoming fascinated by the discoveries of James Reid-Moir in East Anglia, I teamed up with Kevin Lynch who, so far as I know, is the only archivist of Moir. Lynch is an amateur archaeologist, photographer, lithologist and flint-knapper residing in East Anglia. Together, we have researched the times, the publications, the artifacts, and the human



**"As we have previously shown, Ipswich Man (a modern-type human) was found covered with boulder clay at a site that also yielded human bones of two other individual humans, both of modern type."**

remains discovered by Moir. Kevin has visited the sites of Moir's excavations, as well, recovering similar artifacts (e.g., **Fig. 1**) from the same strata identified by Moir at the very sites Moir excavated one hundred years prior.

One of the central tenets of scientific investigation is repeatability, the ability of independent scientists using the same methods, to come to the same conclusions, in this case, finding similar man-made implements, just as the original finder did. In the case of Darmsden Pit excavations by Moir, re-excavation (by nature at the site), or in this case, a mere visit, resulted in an implement being found from Tertiary gravel, very similar to the museum pieces from that site, which were also re-discovered by Kevin in the Ipswich Museum basement.

After the discoveries by mainstream archaeologists

this past decade of both implements and human footprints in the Cromer Forest Bed Formation at Happisburgh on the Norfolk coast it's pretty hard to deny that humans were already there in the vicinity of a million years ago.

As we have previously shown, Ipswich Man (a modern-type human) was found covered with boulder clay at a site that also produced human bones of two other individual humans, both of modern type. A site excavated nearby at Woodbridge yielded human bones and the tusk of *Elephas meridionalis*, an early Pleistocene species. It was recovered from the same strata as Ipswich Man. The boulder clay covering Ipswich Man was left after the Anglian Glaciation melted northwards, around 440,000 years ago. Before that time, possibly as early as 800,000 years ago, Britain was arctic. Graves could not be dug in frozen ground. By 850,000 years ago, scientists find



**Fig. 1.** A 'hollow scraper' discovered by Kevin Lynch in the West Runton-Cromer region along the Norfolk coastline, U.K., compared with a similar characteristic paleolith from Erment, Egypt. Kevin has made several trips to West Runton and Cromer—two sites that bracket the British Museum footprint site on the north and south coastline. Kevin followed closely Moir's directions in order to find the locations of his sites, after which he found various recognizable types of humanly-made stone implements and debitage. The number of implements collected from the chalky basins alone was close to one hundred objects.

boreal species pine cones along with humanly-worked tools, meaning that humans were living in a boreal environment, similar to Scandinavia has today. This type of climate requires humans living in it to have clothing, which is something we tend to associate with modern man. And even at 850,000 years ago, these humans were probably living in shelters they built cooperatively, meaning they had language, something we also tend to associate with modern humanity. Still, within an earlier Cromer Forest Bed layer dated to around 950,000 years ago, in Cromer estuarine mud flats exposed by the North Sea, the British

> [Cont. on page 5](#)



## Following Moir along the Norfolk coast (cont.)



**Fig. 2.** James Reid Moir at the Cromer site on the coast of Norfolk, 1929. This was nearly 100 years before the discovery of 850,000-yr old human footprints at the site by modern scientists in May 2013.

**"This places humans who had very modern-looking footprints in Britain right around a million years ago."**

Museum managed to photograph 54 human footprints before they were washed away by the tide. This places humans who had very modern-looking footprints in Britain right around a million years ago. During this time Britain was cooling off from a tropical environment in the very early Pleistocene, as noted by Moir's finding of monkey bones in the Cromerian layers. Moir excavated the same sites one hundred years earlier than the mainstream archaeologists are presently excavating today. Why does he not get the credit for being the first discoverer?

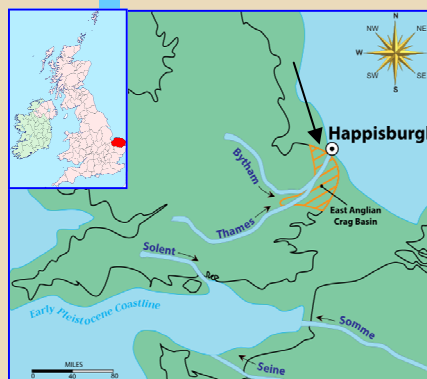
Actually, Moir did get a little, grudging credit after the first discoveries made by Parfitt, *et al.*, at Happisburgh, Norfolk. As noted in one of our earlier articles titled [James Reid-Moir was right on track 100 years ago proven by 850,000-year old footprints recently discovered in Happisburgh, Norfolk, U.K.](#) (PCN #28, March-April 2014) a mainstream publication, *Current Archaeology* (Vol. 210,

Jan-Feb, 2006) gives Moir at least a "partial rehabilitation." The one-page leaf features a coastline shot of West Runton beach, which was a site excavated by Moir, but not at the time visited by ourselves. As West Runton was chosen for the backdrop for the Moir 'partial rehabilitation' article, this site, which bears the Cromer stratigraphy used by the British Museum to date the footprints, suggests a need for re-investigation. To that end, Kevin made multiple trips to West Runton and Cromer on the Norfolk coast (**Fig. 3**), which sites bracket

the BM footprint site on the north and south coastline. At both places, he followed Moir's directions closely to find the remains of his sites, and proceeded to find many types of humanly-made stone implements, some of which we feature in this article (see Fig. 1 on the preceding page, **Fig. 4** at left, and **Fig. 6** on the following page). The number of the implements collected from the chalky basins at West Runton,

as featured in a close-up of the beach area (**Fig. 5** on

the following page) was close to one hundred objects, which included debitage. The basins collect heavier objects, like the



**Fig. 3.** Inset: Location of Norfolk County (red) within the greater U.K. **Large map, circle point:** Location of Happisburgh on the coast of Norfolk where the 850,000-year old human footprints were discovered in May 2013 vindicating Reid Moir's assertions nearly a hundred years earlier regarding very early man in the region. **Arrow:** Location of West Runton and Cromer where the artifacts discussed in this article were found by Kevin Lynch. **Green outline:** General coastlines as they were located during the early Pleistocene.



**Fig. 4.** Both sides of a flint knife from the Norfolk coast at Cromer as found by Kevin Lynch. It was recovered from the dark, peat-stained pebbly sand layer near the cliffside. According to Moir's observations of Cromer—which agree with mainstream geology of the area—this knife could be Cromerian (c. 866,000–478,000 years) or older in age. This piece is seen as having been cleverly worked to afford a finger hold (arrows), for exerting greater pressure. It is little rolled, if at all, indicating it came out of a formation recently washed by North Sea storms.

boulders from the once-overlying boulder clay. Retaining stone objects, as the ever-rising seas pushed tides and storms inland, scouring the sunken surfaces down to chalk, the stone implements settled down to the sandy bottoms of the chalk basins. Removing the boulder material, artifacts are found in the sandy layer underneath. Moir reported the sandy layer as thick as 18" but it is considerably less today.

If evidence of early man is to be actively sought for, we, having found Moir's excavations to be on the spot, suggest looking where he found his implements and other evidence of early man. Certainly, his evidence for Cro-

> [Cont. on page 6](#)

## Following Moir along the Norfolk coast (cont.)

**"If evidence of early man is to be ac-**

merian Man is right in line with evidence discovered lately in Britain, very near his sites, and in the same



**Fig. 5. Top:** Overhead longshot view of chalk exposure on the Norfolk coast as taken from the top of the West Runton Cliffs. **Bottom:** Closeup of the chalkbed as seen in the lower left hand corner of the top picture. The finds are in pockets of the chalk area below those covered in seaweed (the darker parts of the picture). They are not found anywhere else on this beach thus far other than an area about 25yds X 20yds, with the chalk "pool" in the center areas.

**tively sought ... we... suggest looking where [Moir] found ... evidence of early man."**

stratigraphic position. Every time Kevin visits these areas, he finds artifacts. Think what a professional archaeological team could do at these sites with all this surface evidence practically lying about? If this were the case in Africa, I can guarantee there would be excavation!!

### Discussion

We see by the types of implements collected on these Norfolk beaches, near the cliffs, in the chalky pothole sands, under the boulders, that early man was here long enough to establish a considerable stone tool industry. All the pieces featured here show unmistakable signs of human workmanship from the 'crude-ish' flint nodule, to some of the more finished and sharper scrapers and knives. These tools all are typical forms of flint tools found at other Paleolithic sites around the world, as the side-by-side comparison in Fig. 1 of a West Runton 'hollow' scraper and an Egyptian paleolith from the British Museum shows. In light of this and much more evidence we

wonder how can mainstream archaeologists stay away from these indications of a rich excavation to be had? As shown in the paleo-map of Fig. 3, these sites including West Runton and Cromer were all quite a distance inland during the Early Pleistocene. West Runton also has the remains of a

paleo-river which flowed East-West, making it a location we might expect to find traces of hunter-gatherers. The potential for such productive sites is clearly increased as we follow Moir's

footsteps; others should take note.

KEVIN LYNCH is a retired British businessman, an amateur archaeologist, archivist and member of the Prehistoric Society of Britain.

An avid collector of flints from his local countryside and beaches, he and his wife live in Hadleigh, Suffolk, UK. Lynch's specialty is British ar-

chaeology of the late 19th and early 20th centuries concentrating on the life and works of J. Reid-Moir. He and Richard Dullum have lately blended their interests in prehistory to write a series of articles dealing with the hey-day of British archaeology at the turn of the 20th Century.

RICHARD DULLUM is a surgical R.N. working in a large O.R. for the past 30 years as well as a researcher in early human culture. He is also a Vietnam vet with a degree in biology. In addition to his work with Lynch, he has written seven prior articles for PCN.

All of Lynch and Dullum's articles about Classic British Archaeology in *Pleistocene Coalition News* can be found at the following link:

[http://pleistocenecoalition.com/index.htm#Dullum\\_and\\_Lynch](http://pleistocenecoalition.com/index.htm#Dullum_and_Lynch)



**Fig. 6.** This flint nodule was found on the same trip in July 2015 where Kevin Lynch found also a flint triface. Again, this artifact shows multiple signs of human workmanship. It was found in another hole in the chalk-pan, under the sand and boulder. Like the similar triface artifact, it fits perfectly in the hand. It is quite suitable for fairly heavy jobs. It is also the same black flint that the mainstream found at several nearby areas.



## Member news and other info



**Direct links to recent articles**  
PCN #37, September-October 2015:

[Flagstaff Stone: New dating results](#)

[Forgotten heroes of archaeology: Cyrus Newton Ray](#)

[Kudos highlights since Issue #19](#)

[Member news and other info](#)

[Early man and the sea](#)

[Following Zilhao's lead: Rock art calumny watch](#)

[Detail from a Utah rock art panel](#)

[Debunking evo. propaganda, Part 15](#)

[Global perspective on Australian archaeology](#)

**"If current loose standards for defining hominid species were applied at the San Diego Zoo, 'each mammal species would need five more cages.'"**

—Tim White, PhD

**Archaeologist, Sachin Tiwary, PhD**, writes regarding his new book, [\*\*Ethno Rock Art: A Case Study of Kaimur, Bihar.\*\*](#)

The book just came out in hard-cover, 2015.

**Hardcover**

300 pages

**Product dimensions**

8.3 x 5.1 x 8.3 cm

**Publisher**

Ruby Press & Co.;  
1st Edition (2015):

<http://www.indiamart.com/ruby-press-company/>

**Tel. contact**

08046030259

**E-mail**

Rubypress Co  
<[rubypressco@gmail.com](mailto:rubypressco@gmail.com)>

**Postal Address**

- XI/3834, Shanti Niketan Building, 2nd Floor
- Pataudi House Road, Daryaganj
- New Delhi – 110002, Delhi, India

**The book is also available from Amazon India:**

<http://www.amazon.in/Ethno-Rock-Art-Study-Kaimur/dp/9382395733>

Dr. Tiwary (of the Archaeological Survey of India) is the author of the article [\*\*Newly discovered petroglyph sites, Kaimur Range, Uttar Pradesh and Bihar States, India\*\*](#) (PCN #35, May-June 2015).

**CORRECTION for PCN #37 regarding Fred Budinger's announcement that the [\*\*Calicodig.org\*\*](#) website is back up and running:**

"I saw in the *Pleistocene Coalition News* that the Calicodig web site is back up,

and I found that it is, but the note in the newsletter credits it to the two of us [Fred Budinger, Ted Oberlander] and 'Lee Dexter.' ... Could a correction be published in the next *PC News*?"

—Ted Oberlander

The 3rd party involved in maintaining the Calicodig website is Dexter Thomas rather than Lee Dexter. The website was re-booted after one of our readers noticed it had gone missing and wrote to us searching for it.

**Installation artist and theorist on prehistoric language, Michael Winkler**, writes regarding

some of his new work on language, images and signs, and continues to challenge the ideas of modern linguistic founder Ferdinand de Saussure:

[\*\*New Discoveries Should Re-open the Discussion of Signs\*\*](#)

By Michael Joseph Winkler

[https://alternativetheoretics.files.wordpress.com/2015/12/winkler-michael\\_new-discoveries-should-reopen-the-discussion-of-signs\\_at.pdf](https://alternativetheoretics.files.wordpress.com/2015/12/winkler-michael_new-discoveries-should-reopen-the-discussion-of-signs_at.pdf)

Winkler writes in his announcement:

"I was supposed to focus this article on the philosophical implications of my ongoing process-based exploration of language and image, and I did do that, but I couldn't resist also taking the opportunity to slam the Saussurian foundation of contemporary cultural theory one last time."

"I admit that I have a vested interest in seeing the demise of Saussure; but I'm telling

you, sooner or latter, the current Saussurian-based approach to the critical evaluation of contemporary art is going to bite the dust because it's lost its foundation."

E-mail: Michael Winkler  
<[m.winkler@yahoo.com](mailto:m.winkler@yahoo.com)>

See also Michael Winkler's [\*\*Ancient art and modern language\*\*](#) (PCN #5, May-June 2010).

**Mainstream quotes of the day –jf**

"If current loose standards for defining hominid species were applied at the San Diego Zoo, 'each mammal species would need five more cages.'"

—Tim White, PhD, famed anthropologist (Laetoli footprints). Quoted in *Science News*, June 27, 2015: p.7.

"What is extraordinary about these early communities of small arthropods is not how different they are from their equivalents in the living world, but how remarkably similar."

—Richard Fortey, PhD, famed paleontologist, Natural History Museum, London. *Life: A natural history of the first four billion years of life on Earth*, 1999: p. 148.

[The only reason similarities might seem "extraordinary" or "remarkable" is the imagined evolutionary notion that they *should* be different.]

"We can imagine a whole range of flippers and fins that *might* be transformed into legs and hands." —*ibid.* p. 149. Dr. Fortey's own emphasis

"When we look at any paleoanthropological—or other—question, we need always to examine our preconceived beliefs. ... We may be unaware that they are preconceptions."

—Ian Tattersall, PhD, famed anthropologist, Amer. Mus. of Nat. Hist. *The strange case of the rickety Cossack and other cautionary tales from human evolution*, 2015: p. 44.

# The Brownwood Skull

By David Campbell

**"Shortly  
afterward  
truck  
drivers**



**shoveling  
the frag-  
ments  
into the  
rock  
crusher  
began to  
notice  
bones  
embed-  
ded in  
them.  
Neverthe-  
less the  
bones  
joined the  
limestone  
in the  
crusher to  
become  
paving  
material."**

**In the last *Pleistocene Coalition Newsletter* I profiled [Cyrus Ray, founder of the Texas Archaeological and Paleontological Society](#).** In that article I made passing mention of documented discoveries made by Ray and other founding members of the Society that would be relegated to the fringe by most members of today's Texas Archeological Society. It is ironic to

note that Cyrus Ray and his associates were doing their best to establish credibility with the staid East Coast establishment by adopting accepted scientific methods and standards. Still it seemed that the ground truth of many of their discoveries out here on the physical fringes of civilization conspired to keep them on the intellectual fringes as well. There are many strange accounts buried in the old Bulletins; this is one of them.

It was late in the year of 1932 that Cyrus Ray read an odd newspaper account of human bones that had been blasted from a solid limestone boulder near Brownwood, Texas. Cyrus found the story to be highly improbable but his curiosity got the better of him. The ninety mile trip from Abilene down poorly paved roads to Brownwood was no step for a stepper such as Ray.

Arriving in Brownwood, Dr. Ray immediately began

rounding up the finders and taking their statements while the facts were still fresh.

Thereafter he visited the site of the bones in their company and took careful measurements as he always did. Later others visited the site and filed a report in "Science Service" but Cyrus felt that the report omitted significant facts. To rectify that he wrote his own report in the Field Notes and Reviews section of the 1933 Bulletin of the Texas Archaeological and Paleontological Society.

A road crew was blasting away at a ledge of Pennsylvanian (323-298 MYA) limestone formation. The resulting boulders were then taken to a nearby



**Fig. 1.** A similar find to the Brownwood Skull is this one from Red River, Fannin County, Texas, just a few counties away from the Brownwood site. As described on the last page, photographs of the Brownwood Skull were not included in Cyrus Ray's report. These photographs are provided as the bones share some of the traits of the Brownwood Skull. **Top:** Partially fossilized mandible. **Middle:** Width rear inferior maxillary 11.5 cm, vertical height 7.2 cm. **Bottom:** Vertical height chin including teeth 3.6 cm. Photos: David Campbell.

rock crusher. One 12 foot square boulder at the foot of the ledge required further reduction and more explosives were applied. Shortly afterward truck drivers shoveling the fragments into the rock crusher began to notice bones embedded in them. Nevertheless the bones joined the limestone in the crusher to become paving material. One long bone, that Cyrus judged to be a femur from the description, was thrown out on the road by one of the drivers. Although the foreman stated that it was a human bone, it

became part of the pavement anyway. Fortunately

> [Cont. on page 9](#)



## The Brownwood Skull (cont.)

***"Though none of the limestone adhered to the bones, the fractured edges were sharp and hard and of the same color as the limestone ledge from which they were blasted."***

another driver with a little more snap notified a company official named John O. Palmer. Palmer along with J.H. Arledge walked over to the site and almost immediately picked up a complete lower jaw containing most of its teeth. Part of the frontal bone with a peculiar nasal bone attached was retrieved with it. Though the finders did not consider the bones to be of any great significance, they nevertheless sent it to town with one of the truck drivers. The driver casually tossed it into the back of the truck and in course of bouncing around on the rough gravel roads some of the teeth were lost. At length the bones were taken to a local dentist, Dr. Snyder, where they lay in repose until Cyrus Ray examined them.

Despite other reports stating that the bones were only partially mineralized, Cyrus found them to be hard and heavy, noting that they were similar to other human skull bones from the Texas coast he had in his possession. (At a later date I hope to give a more detailed description of these other skulls from another article in the Bulletin, "Notes on Five Texas Crania" by anthropologist Dr. Ernest A. Hooton.) Though none of the limestone adhered to the bones, the fractured edges were sharp and hard and of the same color as the limestone ledge from which they were blasted. Palmer and Arledge stated that there was no observable fissure in the boulder and no earth or stained stones were among the rubble where they found the bones. They pointed to a small pile of freshly fractured limestone fragments where they had recovered the bones that were of the same light gray color. At

the time Dr. Ray examined the site nearly all the debris of the boulder had been cleared away.

Just opposite from the boulder's location Cyrus observed that there was a crack in the ledge about a foot wide containing black earth and stained stones but he did not think it necessarily had any connection with the widely detached boulder. Just below the ledge there was a small creek containing water and on the other side, he discovered a burned rock midden. These are quite common in the Middle Archaic to the Late Prehistoric throughout Texas but again Cyrus could see no direct connection to the ledge site.

Dr. Ray pointed out the obvious to Palmer and Arledge stating that scientists would give no credence to a tale of human bones blasted out of solid limestone over 300 million years old. Both held firmly to their first statements concerning the circumstances of the discovery. Cyrus then advanced an alternate scenario that there could have been a cave that subsequently filled with stalagmitic deposits encasing the bones. Yet he reasoned that since the bones had no signs of matrix adhering to them, this theory was not very reasonable either.

Dr. Ray mused that if the petrification of the bones did not evidence their being of great age consistent in color and hardness as the limestone, and if further they did not contain extraordinary anatomical features, he would have dropped the matter then and there. Since they did he felt the bones deserved description (as a reminder, Dr. Ray was an osteopathic surgeon and an ex-

pert on bones):

The ascending ramii of the lower jaw were quite wide, the distance across the top of one from coronid to condyle was 2 1/16 inches. The distance from coronid to coronid was 4 13/16 inches. From the bottom of the sigmoid notch to the bottom of the ascending ramus was 2 1/4 inches. From the back edge of the third molar to the middle of the incisors was 2 5/8 inches. The architecture of the lower jaw is heavy resembling in that aspect and in dental equipment some primitive jaws found near Abilene and elsewhere in Texas. The mylohyoid ridge is flattened like the fossil lower jaw found by George C. Martin on the coast of Texas and the lower jaw found by the writer near Colorado, Texas.

Dr. Ray further stated:

The teeth are much worn. In the left side all teeth are present except the two incisors and their jaw cavities indicate that have been lost recently. On the right side the teeth are all in place except the first premolar recently lost, and the broken off canine. The depth of the sigmoid notch is ten sixteenths of an inch.

The large portion of frontal bone has attached in place a remarkable nasal bone which is wide, flat, and spatulate shaped at the end. It also curves sharply upward. It is 1 1/4 inches wide at the proximal or attachment end. When a rule is set with one end against the skull at its articulation with the frontal bone and extended to the distal end

> [Cont. on page 10](#)

## The Brownwood Skull (cont.)

**"Despite other reports stating that the bones were only partially mineralized, Cyrus found them to be hard and heavy."**

of the nasal bone, the measurement straight across from end to end (not following the marked curvature of the bone) is 1  $\frac{3}{4}$  inches. This long flat upturned nasal bone is like nothing the writer has ever seen before on a human skull.

Dr. Ray concludes his report by noting how rarely nasal bones are found in good condition due to their fragility. That the Brownwood Skull survived multiple explosive charges and rough handling afterward with minor damage and the loss of some teeth is almost as anomalous as the bones themselves.

In Cyrus' own words: "We have reported all of the evidence as told to and ob-

served by us without injecting any conclusions and we have none. The matter should be looked into more fully by experts."

To my knowledge it never was.

There were no photos of the Brownwood Skull to accompany Cyrus Ray's report. I hope readers will not consider it presumptuous of me to include those of a partially mineralized jaw bone I examined a few years ago (see **Fig. 1** on Page 1). It was found on a tributary of the Red River in Fannin County, Texas. A number of its characteristics are similar to those Cyrus Ray described in the Brownwood Skull.

### References:

*Bulletin of the Texas Archeological and Paleontological Society*, Volumes 5 & 6, 1933-34, Texas Archeological Society, 2009 Reprint Edition.

DAVID CAMPBELL is an author/historian and an investigator of geological or manmade altered stone anomalies or large natural structures which may have been used by early Americans. He also has a working knowledge of various issues regarding the peopling of the Americas. Along with Virginia Steen-McIntyre and Tom Baldwin, Campbell is one of the core editors of *Pleistocene Coalition News*. Campbell has also written eight prior articles for *PCN* which can be found at the following link:

<http://pleistocenecoalition.com/index.htm#anarchaeology>

Author's website:  
[anarchaeology.com](http://anarchaeology.com)

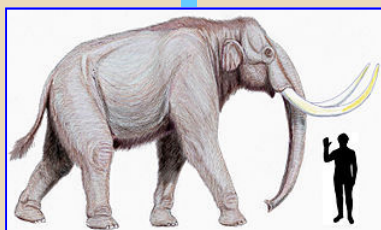
**"If mammoths of any kind were wandering the Bering Land Bridge 1.5 million years ago, could mammoth hunters be far behind?"**

### Mammoth migrations into North America suggest human presence

Virginia Steen-McIntyre

Information source: Laura Geggel, Staff Writer, *LiveScience.com*

**An intriguing note in my November 12 Sigma Xi Smart Brief says that it was probably the cold-adapted Eurasian steppe mammoth (*Mammuthus trogontherii*) that wandered into North America around 1.5 million years ago, and not its**



**Fig. 1.** *Mammuthus trogontherii*; Wikimedia Commons.

warm-climate ancestor *Mammuthus meridionalis*, and that it may be identical to the Columbian mammoth (*Mammuthus columbi*) that ranged across North America during the Pleistocene. This was reported in the November 12 issue of the journal *Science* by co-researchers Adrian Lister, a

research leader of paleontology at the Natural History Museum in London, and the late Andrei Sher, a paleon-

tologist with the Severtsoy Institute of Ecology and Evolution in Moscow.

The study was based on a re-evaluation of fossil

mammoth teeth, and the fact that steppe mammoth remains are found in north-east China 1.7 million years ago and in northeast Siberia 1.2 million to about 800,000 years ago. There are no known fossils of the temperate European mammoth that have been found in northeast Siberia or Alaska, "suggesting that this temperate-adapted species never dispersed as far north as the Beringian transit route."

Why did that catch my interest? Because if mammoths of any kind were wandering the Bering Land Bridge 1.5 million years ago, could mammoth hunters be far behind?

—VSM



# 18,500 BP, Monte Verde, Chile: "It's evidence we cannot ignore."

By Chris Hardaker, MA, archaeologist

**"The US experts**



**could not ignore the younger series of dates. However, they did ignore the older dates. Again."**

## It's déjà vu all over again!

18,500 BP is now the official date for two sites in the New World. Both are right next to each other in southern Chile, right next to the South Pole. Actually, they might be locales of the same site. While some dispute all of the lithic artifacts (e.g., **Fig. 1**) from the site, it was agreed that 35% of the lithic specimens were made from materials that were carried into the region by humans, i.e. man-u-ports.

There were two sets of dates for each locale. The US experts could not ignore the younger series of dates. However, they *did* ignore the older dates. Again.

Monte Verde 2 or MV-2 (18,500 BP; not ignored),

Monte Verde 1 or MV-1 (25,000–33,000+ BP; ignored).

Exactly the same thing happened in 1999.

Same place: Monte Verde, Chile.

Same Archaeologist: Tom Dillehay.

Same US Experts: the Clovis Mafia dons.

Same Point Spread:

MV-2: 14,500 BP; not ignored;

MV-1: 33,000 BP; ignored

It is safe to conclude that Meltzer and the rest of the First American experts:

- cannot ignore dates under 20,000 BP; and,
- dates greater than 20,000 BP are officially ignorable. As it was in 1999 so shall it be now.

The US dons know how to wield their academic muscle. Always have, always will. The

just have to get together and raise their hands up or point their thumbs down. To ignore or not ignore: that is the question.

This is how science is done in the highest reaches of First American research in the

United States. We got the research money and the peer-reviewers, so we get to call the shots for the entire Western Hemisphere (the New World). Life is great, and now history is repeating itself.

Tom's Dillehay's curiosity got the better of him after twenty years wondering whether it was safe to return to a site that first seemed to ruin his career, but in the end it actually made his career. In 2013 he returned to this southern Chile outpost to gather more data, including artifacts, but equally important it was a chance to fill in the holes of the incredible geological column containing the sites.

This time Dillehay was applying the newest cutting-edge field archaeology program to this Chilean backwater, an application that is actually catching on around the globe. It is called the De-escalating Intrusive Geology model. Dillehay just had to apply D.I.G. anywhere and he hit paydirt.

The region containing the sites is made up of a vertical string of sediments with plenty of carbon dating back to at least 43,000 years. There were no artifacts recovered from this lowest of the dated layers, at

least yet. The fact that datable layers of sediments exist in the first place is an incredible gift to geo-archaeologists everywhere.

What makes Monte Verde the "Belle at the Paleoamerican Ball" is the incredible preservation of organic materials

and artifacts made of bone and wood. This is why peat bogs are so great for archaeology. They even found a peat ball wrapped around some skin. How cool is that?

Monte Verde is a dream come true. It offers megatons of environmental information to analyze shifts and trends in environmental, climatic, glacial trends over the last 43,000 years... and counting. It's difficult to find the words to express the enormity of ecological importance that should be assigned to this region.

When you add to this backdrop an apparent human legacy of occupation in the region for at least 33,000 years, the dream becomes an archaeological wet dream.

Or at least it should, you would think.

## You're So Ignorable ...

The First American experts have known about the Chilean sites for going on 35 years, back to the early 1980s or before. Between this time and 1999, these same US experts saw fit to ignore this Pleistocene bonanza known as Monte Verde. Finally these Clovis First

> [Cont. on page 12](#)



**Fig. 1.** Two views of an 18,500–17,000-year-old stone artifact from Monte Verde, Chile, showing a bifacially knapped and retouched edge. Dillehay, TD, et al. 2015.

# 18,500 BP, Monte Verde, Chile (cont.)

**"The region containing the sites is made up of a vertical string of sediments with plenty of carbon dating back to at least 43,000 years."**

experts were seduced by free plane tickets to make a field trip to the site. Was it worth it?

As a result, in 1999, twenty years after the original finds were made, Monte Verde became the Clovis First Paradigm Buster, becoming the earliest officially accepted site in the New World. The US archaeologists were hard pressed, though. One was overheard whispering to a colleague, "Funny, it doesn't look Clovis."

Monte Verde stone technology was as different from Clovis as you could probably get. It totally closed the door of righteousness in the faces of the Clovis Mafia, but in the end they showed everyone that they were not to be messed with. In the end, the 14,500 dates were accepted. After all, it is only a couple thousand years older than Clovis. The Clovis dons could still salvage their pride. But those 33,000 year old dates? No chance, pal.

So, what did Tom Dillehay have to say when he saw the Clovis Mafia's great displeasure at the 33,000-year-old dates? Probably something like, 'sure, why not. I never much liked those pesky 33ky dates anyway. It's a deal.'

And it happened again, just like that, here in 2015. It is all about censoring yourself so others don't have to. For example, there is no mention of the ignorable 25,000-33,000 year old dates in his recent abstract, though they are well covered in the text.

Here is another nugget showing how the average archaeologist appeases the ex-Clovis dons who are looking over his shoulder as he writes his report. It shows how Dillehay describes the cultural data garnered from the 33,000-year-old deposit of MV-1. Anywhere else in the world, Tom could have written something a bit easier like: 'Several stone artifacts were associated with three

possible clay-lined hearths.' At Monte Verde, this description was made much more nebulous and sidwinderly.

"MV-I dated ~33,000 BP and initially defined by scattered occurrences of three clay-lined, possible culturally-produced burned areas and twenty-six stones, at least six of which suggest modification by humans." 2015: 4/27.

For the second time in so many publications, the most recent dates from a Monte Verde project were promoted, while the equally valid older dates were simply ignored. Officially the term is, 'Inconclusive.' Two different projects, same 25,000 BP+ dates, and all lithic artifacts are made out of materials that had to be man-u-ported in. And the conclusion by Meltzer and the US experts:

Nothing to see here.

Inconclusive, ergo ignorable. This means that the combined weight of these separate recoveries and dating regimens are still not good enough evidence to reset the cellar date for American antiquity to 25,000-33,000 BP. With the infamous and extremely ignorable Pedra Furada site (32,000 BP) removed from the table long ago, there are obviously no precedents for the new MV-1 artifacts other than the old MV-1 artifacts. Therefore, they don't count. Why? Because the US guys said so.

Maybe in twenty years, somebody will decide to go to Monte Verde again.

Welcome to archaeological science, US-Style.

## References

### Monte Verde, Chile, 2015

Gibbons, A. 2015. Oldest stone tools in the Americas claimed in Chile. *Sciencemag.org*. November 18.

<http://news.sciencemag.org/archaeology/2015/11/oldest-stone-tools-americas-claimed-chile>

Dillehay, TD, et al. 2015. New Archaeological Evidence for an Early Human Presence at Monte Verde, Chile. *PLOS ONE*, November 18.

<http://journals.plos.org/plosone/article?id=10.1371/journal.pone.0141923>

Dillehay, TD., and MB Collins. 1988. Early cultural evidence from Monte Verde in Chile. *Nature* 332: 150-52.

<http://www.nature.com/nature/journal/v332/n6160/abs/332150a0.html>

### Pedra Furada, Brazil 1986

Guidon, N, and G Delibrias. 1986. Carbon-14 dates point to man in the Americas 32,000 years ago. *Nature* 321: 769-71.

[www.nature.com/nature/journal/v321/n6072/abs/321769a0.html](http://www.nature.com/nature/journal/v321/n6072/abs/321769a0.html)

### Valsequillo Reservoir

<https://www.youtube.com/watch?v=koYWznEIV50>

<http://www.amazon.com/First-American-Suppressed-People-Discovered/dp/1564149420>

CHRIS HARDAKER, BA, MA, is an archaeologist working in California and is one of the founding members of the Pleistocene Coalition. He reviewed and catalogued the data from the massive artifact collection of Calico. For details, see the series, [The abomination of Calico](#), Parts 1-3, beginning in *PCN* #6, July-Aug 2010, and [Calico redux: Artifacts or geofacts: Original 2009 paper updated and serialized for PCN](#) (*PCN* #24, July-Aug 2013) and its [Part 2](#) (*PCN* #26, Nov-Dec 2013). For additional in-depth information and quality photographs of tools recovered from the Calico Early Man Site excavations see [Calico's "Double-notched" blades from T-22](#) (*PCN* #30, July-Aug 2014) and [Calico's only classic handaxe](#) (*PCN* #31, Sept-Oct 2014). Hardaker is also author of the book, [The First American: The suppressed story of the people who discovered the New World](#).

See [The abomination of Calico, part three](#) (*PCN* #8, Nov-Dec 2010), for a closer look at Monte Verde.

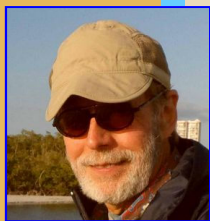
All of Hardaker's articles in *PCN* can be accessed directly at the following link:

[http://pleistocenecoalition.com/#the\\_first\\_american](http://pleistocenecoalition.com/#the_first_american)



# More on a Utah rock art panel with a proposed mammoth hunting scene

By Ray Urbaniak Engineer, rock art photographer and preservationist



In my [prior article](#), I discussed a photo I had recently taken of a proposed mammoth (or mastodon) being hunted with an atlatl or spear thrower.

Although there are, of course, many possible interpretations I will stick with this one for now.

**Fig. 1** from that article is reproduced at right. I reproduce the rest of the panel below in **Fig. 2**.

The idea that rock art panels of unknown ages in the U.S. could depict Ice Age animals is controversial. However, in this case, as I suggested in earlier arti-

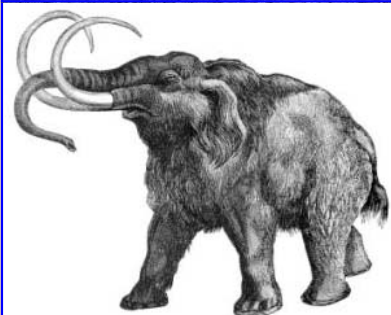
cles, in some cases they could have depicted something they only knew from oral form. This could help explain the unusual appearances of many such depictions.

I revisited this idea while considering the person who created the proposed mammoth hunting scene because of the unusual nature and positioning of what I am interpreting as "tusks." In other words, having never seen an actual mammoth tusk, the tusks are depicted as very large horns since horns are what the person would have been familiar with in their everyday life.

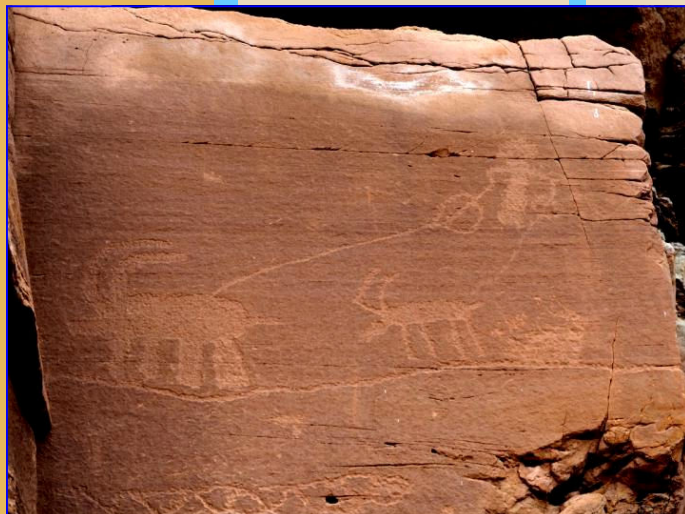
In a later article, I will discuss the line which was engraved underneath the animals in the panel.

RAY URBANIAK is an engineer by education and profession; however, he is an artist and passionate amateur archeologist at heart with many years of systematic field research on Native American rock art, especially as related to archaeoastronomy, equinoxes and sol-

stices in Utah. He has noted that standard archaeological studies commonly record details of material culture but overlook the sometimes incredible celestial archaeological evidence. Urbaniak has also played a major role in documenting and raising concerns for the accelerating vandalism, destruction and theft of Native American rock art. He has brought state representatives to rock art sites with the hope of at least



**Fig. 1.** In PCN #34, May-June 2015, I offered an interpretation for a petroglyph I discovered northwest of St. George, southwest Utah and included this comparison. Along with tusks, a trunk and a small tail, it was the robustness of the legs that especially gave the sense the image was meant to depict a large and heavy mammal.



**Fig. 2.** Here is the complete panel including the "mammoth" depiction when the sun is shining on it. The panel is protected from above being situated underneath a small overhang. Photo: Ray Urbaniak.

cles, another possibility is that descriptions of certain Ice Age animals may have been passed down in oral tradition over time, perhaps over many generations. In such a case, rock art artists wouldn't necessarily have had to actually see for themselves the animals they were portraying;

placing labels as protected nearby what he calls "sacred art" sites as a deterrent to vandalism. Urbaniak's book, *Anasazi of Southwest Utah: The Dance of Light and Shadow* (2006), is a collection of rock art photographs which include clear descriptions with many photographs being time-sequenced as events occurred along with compass, angular orientations, and other information. All of Urbaniak's prior articles in PCN, beginning with *Ice Age animals in Southwest U.S. rock art, part 1* (PCN #22, March-April 2013) can be found at the following link:

[http://pleistocenecoalition.com/index.htm#ray\\_urbaniak](http://pleistocenecoalition.com/index.htm#ray_urbaniak)

Author's webpage:

<http://www.naturalfrequency.net/Ray/index.htm>

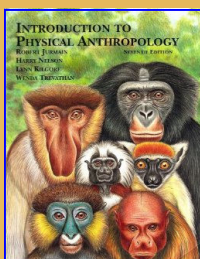
E-mail: rayurbaniak@msn.com

# Debunking evolutionary propaganda, Part 16

Overview and links for *Parts 1–15*

**A lifelong reader of textbooks in every field exposes “thousands” of examples of false statements of fact and other propaganda techniques easily spotted in anthropology, biology, and paleontology textbooks**

By John Feliks



**The field is “anthropology.”**  
Anthropology—the study of “humanity”—has a long history of deceiving the public. It is a powerful tool for manipulating both cultural and personal identity.



One of the most important questions in modern times is that of our origins and prehistory. In recent years the science community through continuous propaganda has managed to convince many that it has answered the question with evolution. The public is being told that evolution is now established fact. This series provides evidence that the exact opposite is true because evolution is in clear conflict with the fossil record.

## **Part 1: Basic propaganda techniques in college textbooks** (Issue 23:10–12, May-June 2013)

**Question:** How does one make an ideology claimed as fact appear overwhelmingly true to students never taught how to think critically?

**Answer: 1.)** Turn science textbooks into propaganda;  
**2.)** Intimidate students who question the propaganda;  
**3.)** Withhold conflicting evidence.

## **Part 2: Fictions taught as fact in college textbooks, 1st half** (Issue 23:16–18, May-June 2013)

The statistic equating higher institutional education with belief in evolution is not an indication of critical thinking as naïvely believed. It is an indication of how captive audience propaganda works.

## **Part 3: Fictions taught as fact in college textbooks, 2nd half** (Issue 24, July-August 2013)

## **Part 4: Evolutionists are not qualified to assess 'any' evidence** (Issue 25, September-October 2013)

“The Prezletice human molar has been re-identified as a bear ... and the ‘hominid’ skull from Venta Micena as a horse.”

—Clive Gamble, *The Palaeolithic societies of Europe*, 1999: 116

“The history of paleoanthropology is one of repeated misidentification of fossil ancestors.”

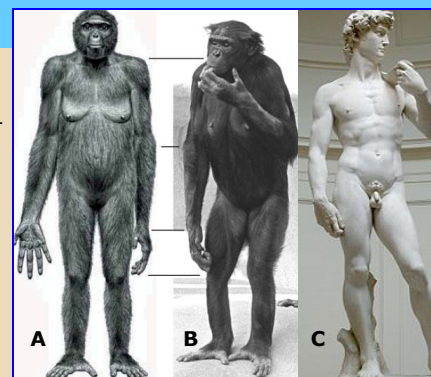
—Sarmiento *et al.* 2002. Morphology-based systematics (MBS) and problems with fossil hominoid and hominid systematics. *The Anatomical Record* 269 (1): 50-66.

## **Part 5: Mandatory U.S.-legislated indoctrination now in place - 1st target, captive-audience children in K-12 science classrooms** (Issue 27, January-February 2014)

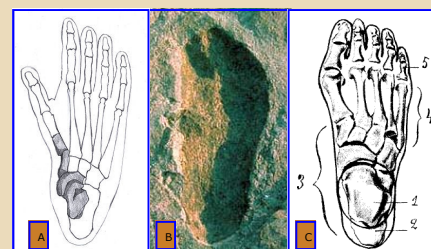
Modern science is in a compromised state having descended to the level of adopting use of *well-known propaganda techniques* to promote the ideology of Darwinism (that complex life and intelligence “evolved” from a batch of chemicals). In the *Next Generation Science Standards* this ideology has been interwoven with actual facts in a way that deceives anyone not objectively informed about fossils. 95% of the propaganda techniques described in *Part 1* are in the document. Americans need to recognize that the “Standards” for biology—legislation to force evolutionism on students while blocking them from conflicting evidence—is corrupted science. They are the result of decades of textbook fraud and a lack of perspective regarding the fossil record. Any grade school subject depending upon tactics such as those discussed is not ready to be taught as science.

## **Part 6: The inconvenient facts of living fossils: Brachiopoda** (Issue 28, March-April 2014)

From the very beginning, Darwin knew he had a *big* problem—the fossil record. According to paleontology’s own numbers it can plainly be seen that the fossil record is not a record of species, genera, families or orders—let alone classes or phyla—evolving one into another but a *very clear record* of thousands of well established organisms which have not changed for tens to hundreds of millions of years.



In the October 2009 issue of the journal *Science*, evolution-trained scientists were quoted that Ardi (A) “doesn’t look much like a chimpanzee ...or any of our closest living primate relatives,” e.g., (B). —Ann Gibbons

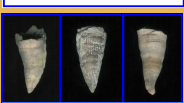


Regarding the famous 3.6 million-year old Laetoli human footprints (B), evolutionists actually teach they were made by (A) australopithecine apes, rather than by (C) humans.

> [Cont. on page 15](#)



## Overview and links for *Parts 1–15* (cont.)



The idea is to start thinking "dog breeds" for *all* fossil types. The term 'species' has long been out of control in biology, anthropology, and paleontology and can no longer be trusted as anything more than a way to differentiate varieties.



### Part 7: " " " [Mollusca](#) (Issue 29, May-June 2014)

**"Like brachiopods, molluscs ... provide for an excellent, unbroken fossil record from the Cambrian to the present. Most of the classes of molluscs living today... were already present in the Cambrian."**

—*Animals Without Backbones*, Buchsbaum et al 1987, Third Ed., p. 520

**"If my theory be true, numberless intermediate varieties ... must assuredly have existed; ... evidence ... could be found only amongst fossil remains."**

—Charles Darwin, *The Origin of Species*, 1859, p.179

*Parts 6–12* are based on the main volumes of the *Treatise on Invertebrate Paleontology*. I have also proposed an expanded definition of the term *living fossil* to reflect the true facts of the fossil record. This is to include organisms with remarkably long histories even though they eventually went extinct. Noting that this definition is based on date ranges which are agreed to by international consensus it can be stated that all taxa remain the same since their first appearance. In other words, they do not evolve. The three fossil snails at left extend from the Early Cambrian (542 million years ago) to the Present. They demonstrate a clear continuity through time. Such continuity is not helpful to Darwinism and so it is concealed through obfuscations in the taxonomic naming systems used in biology, paleontology, and anthropology. In these evolution-corrupted fields, if necessary evolutionary categories are not found, they are simply created. The top two fossils are not only called different species, but different genera, different families, different orders, and even different subclasses. *The bottom fossil is regarded a different class entirely*. The public needs to realize that they've been railroaded. Think *dog breeds* not evolutionary genera or classes.

### Part 8: " " " [Porifera and Cnidaria](#) (Issue 30, July-August 2014)

**"Modern corals...may have evolved from some nonskeletonized common ancestor that existed in the Paleozoic but left no fossil record."**

—Bruce L. Stinchcomb, geologist, paleontologist

This is a standard trick in Darwinism to explain why evolutionary claims *do not match* the physical evidence of the fossil record. It is applied by mainstream PhDs trained in biology, paleontology, and anthropology to every single creature and every type of creature known. Paleontologists cannot explain the origins of *any* organisms without recourse to a pantheon of invisible "unknown" ancestors. Yet, they can tell you the exact date range to the decimal of when *fossilized* creatures lived. This means that their desired explanation does not match their accrued facts.

### Part 9: " " " [Echinodermata](#) (Issue 31, September-October 2014)

**"The apparent first appearance of a crinoid occurs in the Lower Ordovician of England. ... It was not an intermediate form. It was not a primitive link with older ... ancestors.** The lack of a sequence of transitional types leading back to the ancestral stock is, of course, the chief reason for the uncertainty about origin of the class."

—Paul Tasch, geologist, *Paleobiology of the Invertebrates*, 1980 Edition: 759 & 761.

**Question.** According to the physical facts of the fossil record (not imaginary family trees, extrapolations from genetics, or other tricks of the Darwinism trade), what are the ancestors of the echinoderms—crinoids, starfish, and sea urchins?

**Proposed answer.** Crinoids, starfish and sea urchins.

Echinoderms appeared hundreds of millions of years ago and survive today. And like all invertebrates, the origin of these creatures is a frustration to scientists incongruously teaching evolution as fact. Tasch's description implying that the 'intermediate' ancestors of other animals are less uncertain than those of crinoids is misleading because *not one* has been established. Sciences that teach as fact the opposite of what the cumulative physical evidence actually says need to be questioned. It doesn't matter how many adherents there are.

### Part 10: " " " [Bryozoa](#) (Issue 32, November-December 2014)

**"Bryozoa is one of the most puzzling phyla in the animal kingdom and little is known about their evolutionary history."**

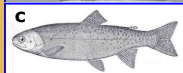
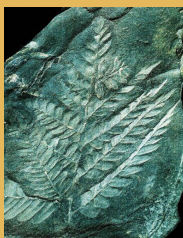
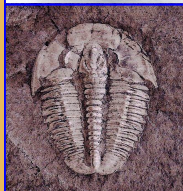
—Fuchs, J., M. et al. 2009. The first comprehensive molecular phylogeny of Bryozoa (Ectoprocta) based on combined analyses of nuclear and mitochondrial genes. *Molecular Phylogenetics and Evolution* 52 (1): 225.

The title of the above paper might make readers imagine that science is on its way to explaining bryozoans in evolutionary terms. This is not the case. Although paleontology and biology consider bryozoans—or moss animals as they are popularly known—to be primitive, simple organisms that evolved like everything else in the Darwinist worldview, the actual real-time facts of the fossil record tell a different story. What the record actually shows is that after nearly 500 million years bryozoans are still bryozoans—just like when they first appeared. They didn't evolve from anything else; nor did they evolve into anything else. The quote itself may seem innocuous but it uses two standard tricks that prevent readers from considering bryozoans objectively: 1.) Not "little is known," but truly nothing is known about the so-called evolutionary history of bryozoans. The problem, as in all such papers, is that evolution is presented as a 'given' despite the fact that not a single group of organisms has been established in evolutionary terms; and 2.) is the misleading implication that bryozoans are a uniquely puzzling group. This too is a standard technique used in the community. The idea is to imply that evolutionary histories for organisms other than the ones you are currently talking about are established, which, again, is not true.

> [Cont. on page 16](#)



## Overview and links for *Parts 1–15* (cont.)



### Part 11: " " [Arthropoda](#) (*Issue 33*, January-February 2014)

**"So where did trilobites come from? ...The evidence is neither clear nor unambiguous."**

–Sam Gonn III, PhD, biologist; trilobite authority, and webmaster of the comprehensive resource [trilobites.info](#)

Dr. Gonn's statement about the mysterious origins of trilobites should have a familiar ring to it. As pointed out earlier, this is the same observation made of *all* organisms. But the public doesn't know it because it is routine in the evolution community to admit "problematic evolution" for the organism at hand while implying that other organisms have been figured out in evolutionary terms. Proof of evolution has not been established for a single group—not one species, genus, family, order, class, phylum, or any other category.

### Part 12: " " [Trace fossils & graptolites](#) (*Issue 34*, March-April 2014)

**Trace fossils**, except for footprints, are little known to the public. They concern the passage of time. Trace fossils represent the actual activities or experiences of ancient organisms as they went about their daily lives. They include tracks, burrows and borings, and even records of unusual events that might only have happened to a single individual. Trace fossils preceded "long exposure" photography by hundreds of millions of years. They actually record events in time in high resolution 2D and 3D images and in increments as small as weeks, days, hours, and even minutes and seconds. At their best, they are the equivalent of 3D sculptures of real-time events making them 4-dimensional objects. In contrast to Darwin's hope that the fossil record would prove to be a record "poorly kept," one can hardly ask for a more perfect record of anything that happened in the ancient past. **Graptolites**, mysterious fossils believed to represent animals extinct for the past 350 million years, were recently discovered to be alive in the Indian Ocean adding them to a growing list of 'living fossils.'

### Part 13: " " [Plants](#) (*Issue 35*, May-June 2015)

**"Just a single species of green algae gave rise to the entire terrestrial plant lineage." ... "Exactly what this ancestral alga was is still a mystery."**

*Biology*, 6th Ed., Raven et al, 2002: pp. 735 & 736.

The above is a standard evolutionary false statement of fact followed by a direct admission from the authors that they have no idea what they are talking about. *Part 13* is filled with similar quotations not only from textbook authors but from plant specialists demonstrating that they have no idea where plants came from, how they supposedly morphed into each other, or why many so-called "primitive" plants seem to have arrived on the scene after supposedly more "advanced" plants.

**"The genome size of these reputed 'living fossils' [royal ferns] has remained unchanged ... at least 180 million years."** –Bomfleur B, et al. 2014. Fossilized nuclei and chromosomes reveal 180 million years of genomic stasis in royal ferns. *Science* 343 (6177): 1376.

### Part 14: " " [Fishes and invertebrates](#) (*Issue 36*, July-August 2015)

**"The evolution of craniates [animals with skulls] may be characterized as... profound shifts... new structures without any ancestral counterpart."**

–John G. Maisey; Curator, Vertebrate Paleontology, American Museum of Natural History, N.Y. *Discovering Fossil Fishes*, p.34

One of the most profound sudden appearances in the 'vertebrate' record is that of the placoderm fishes. Among many other 'firsts'—that happened all at once—they were the first vertebrates with jaws. Not only did they appear out of nowhere as tiny fish but they soon spawned the world's first super-predator, a 33-foot long, 8,000 lb. monster called *Dunkleosteus*. It has been determined that the bite of *Dunkleosteus* equaled 1,100 lbs. of force translating to 8,000 lbs. per square inch at the tip of a fang. How does natural selection turn something that isn't even the nibble of a minnow into the largest and most powerful biological crushing machine on earth—accompanied by 2-inch thick armor plating—without leaving a trace of the process in the fossil record?

### Part 15: [Tetrapod evolution credibility questioned via invertebrate fossils](#) (*Issue 37*, September-October 2015)

**"We knew that tetrapods [animals with 4 limbs]...evolved from fish. ... Almost certainly no single scenario can account for all the [hindlimb] stages. ...We may never piece together the entire puzzle of tetrapod evolution."**

–Jennifer A. Clack, PhD. 2005. Getting a Leg Up on Land: Recent Fossil Discoveries Cast Light On the Evolution of Four-limbed Animals from Fish. *Scientific American*, Dec. 2005. Quoting pp. 100 & 107.

**Question:** How does Dr. Clack—the leading tetrapod authority—go from essentially saying, "We have tetrapod evolution resolved," to "Well, we really don't have a clue"? **Answer:** Evolutionary writers become bolder and less accountable the higher up the taxonomic ladder.

Apart from propaganda, modern Darwinists divert attention away from the lack of evidence for evolution in the fossil record in two primary ways. One of these is to say that the changes are actually genetic. The other is appealing to 'unknown ancestors.' The convenient quality of each of these is that they involve things that are invisible. It is my hope that readers will begin to realize there is something amiss in the science community concerning the subject of origins and that research in this area should be just as objective as in any other.

JOHN FELIX has specialized in the study of early human cognition for 20 years demonstrating that human cognition does not evolve. Earlier, his focus was on the invertebrate fossil record studying fossils in the field across the U.S. and parts of Canada as well as studying many of the classic texts such as the *Treatise on Invertebrate Paleontology* and *Index Fossils of North America*. Except for a few public domain images, all scans in this article are of fossils recovered by the author direct from formations across the U.S. and Ontario, Canada, over a 30-year span.

# Pleistocene underground, Part 1

By Vesna Tenodi MA, archaeology; artist and writer

**"The most important conclusion**



**of Dr Poulianos' research is the co-existence of all main anthropological types—African ... Asian ... European ... at almost the same time period in prehistory."**

**Caves with evidence of ancient human occupation and underground tunnels are one of those intriguing subjects irresistible to passionate archaeologists.**

Ranging in size and depth—from shelters a few meters long to multilevel 40-meter deep cities as found in Turkey—these sites include natural underground formations which show evidence of human

occupation. In some cases, the natural cave passages have been extended with manmade tunnels, and the cave walls embellished with prehistoric art.

Some European and Asian caves and underground shelters are well known and documented, such as the caves with Paleolithic art in Spain and France, as well as caves with a wealth of archaeological material, that were inhabited by Neanderthals as found in Croatia, Germany and Russia.

Some have remained virtually unknown to the general public for many years. The reasons vary. In Europe and Asia, the reasons for relative obscurity of ancient underground networks were in some cases political, due to oppressive regimes, while in other cases they were of a linguistic nature, or the result of a combination of factors.

Some countries have yet to overcome the language barrier. As long as Hungarian research data are published only in the Hungarian language, German and Austrian research in German, and Greek sites are detailed in Greek—and until someone decides to go to the trouble

of translating the material into English—who is to know?

This explains why the Aus-

trian archaeologist, Professor Heinrich Kusch, one of the most passionate people dedicated to ancient cave research, has been working more or less under the radar—globally speaking—for more than four decades.

Dr. Kusch is a prehistorian from the University of Graz in Austria and, together with his geologist/speleologist wife Ingrid, has explored sites all over Europe and Asia for signs of the link between humans and

caves (**Fig. 1**). Prehistoric people mostly used natural caves as shelters. But the Kuschs also found caves that were used for thousands of years for cult worship and ritual purposes, such as the caves they explored in Papua New Guinea, with evidence of burial rites of head-hunting tribes.

While some ancient people worshipped on the top of mountains, others went down deep into the ground to "worship the gods." Such cults are still alive in some tribal societies (Heinrich and Ingrid Kusch, *Sealed Underworld*, 2014).

Underground tunnels, in part man-made, at Vorau region of Styria in Austria—are one of the great myster-

ies the Kuschs have uncovered. Over the last forty years, the couple explored



**Fig 1.** Passage in the "Frauenhöhle" near Kaindorf in Eastern Styria, Austria. Photo ©Heinrich Kusch, courtesy of Heinrich Kusch.

several thousand caves in Europe, Asia, Africa and America, including prehistoric sites for underground cults. They compiled a register of nearly 400 underground places of interest, but what got the world's attention was the evidence of a network of underground tunnels and megalithic structures. Some of these date back between 10,400 to 14,000 years ago, crisscrossing Europe, in a network stretching from Scotland to Turkey and from Northern Europe down to the Mediterranean Sea. This discovery places the Kuschs among those researchers who are revolutionizing the

> [Cont. on page 18](#)



## Pleistocene underground (cont.)

field of archeology (Heinrich Kusch, *The Secrets of the Underground Door to an Ancient World*, 2011).



**Fig. 2** Petralona cave in northern Greece. **Insert (upper left):** Petralona skull. Images, Wikimedia Commons.

**"Some European and Asian caves and underground shelters are well known and documented. ... Some have remained virtually unknown to the general public for many years."**

After the discovery of Turkey's Gobekli Tepe in 1994, dating back 12,000 years, it became obvious that we will have to rewrite the story of prehistory. Gobekli Tepe is so sophisticated and technologically advanced it forces a rethinking of the abilities of Paleolithic man, predating as it does the officially accepted start of the Neolithic revolution in Europe by at least six thousand years.

Much like Gobekli Tepe, discovery by the Kuschs calls for a new chronology of Stone Age cultures.

### Out of Africa or out of mind?

Some puzzling human fossilized remains have been discovered in a number of caves. Some of these have been dated and attributed to Neanderthals, such as the finds from the Krapina and Vindija caves in Croatia, while others are the subject of ongoing controversy and vitriolic battles among the experts. These currently disputed objects include those found in the Petralona cave in Greece, Gran Dolina and Atapuerca in Spain,

Vertesszöllos in Hungary, Arago and Terra Amata in France, Happisburgh in Britain, Mauer, Steinheim, and Bilzingsleben in Germany, and a number of equally enigmatic sites in Turkey and Russia.

These controversial finds have one thing in common. They all seem to conflict with the popular 'Out of Africa' theory of human origins. That theory is known for belief in a linear 'ape-to-human' evolutionary path. The controversial finds I mention here, on the other hand, are

believed to support a totally different popular theory known as the 'Multiregional' theory. In either case, proposed theories, dates, and interpretations of what constitutes different species are across the board.

### Petralona skull—oldest European hominid

The hominid cranium found in 1959 in Petralona cave (**Fig. 2** and **Fig. 3**) in northern Greece is associated with the Middle Pleistocene cave deposits. It provides morphological, metrical and radiographical information on what is commonly thought of as the 'evolutionary transition' from *Homo erectus* to *Homo sapiens* (C. Stringer *et al.* 1979). The significance of the fossil hominid skull from Petralona, Greece. *Journal of Archaeo-*

*logical Science* 6[3]: 235-53). Much like the finds at Denisova cave in Siberia encouraged the naming of another new category and species, *Homo georgicus*, the Petralona skull also does not fit into any known category and was consequently named *Archanthropus europaeus petraoniensis*.

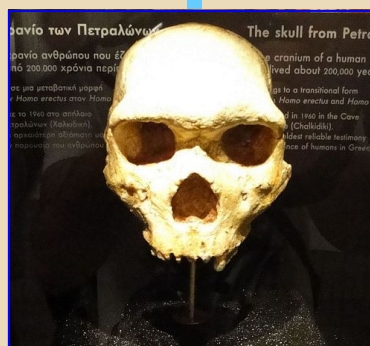
The discovery of the Petralona skull was deemed dangerous for its potential to change what is commonly believed about human evolution. The suppression and cover-up which followed read like a real archaeological thriller.

The Petralona human skull was found embedded in the wall of the cave. Later research also uncovered a large number of fossils including proposed "pre-human" species, animal hair, fossilized wood, as well as stone and bone tools. Dr Aris Poulianos is an expert anthropologist

who was working at the University of Moscow at the time of the skull discovery. He returned to Greece to take up a position at the University of Athens and to lead the

excavation in Petralona cave. He had already published a book, *The Origins of the Greeks*, with his extensive research showing that Greek people did not originate from the Slavic nations but were indigenous to Greece. Dr Poulianos' research into the Petralona cave and skull led him into another controversy. The results showed that "Petralona Man" (as the

> [Cont. on page 19](#)



**Fig. 3.** Petralona skull in frontal view. Wikimedia Commons.



## Pleistocene underground (cont.)

**"The participants in this saga see this politically-driven suppression of knowledge as yet another proof of fear of the unknown among mainstream scientists."**

skull is known) was 700,000 years old, making him the oldest human europeoid (presenting European traits) ever discovered in Europe.

His research suggested to him that Petralona Man evolved separately in Europe and was not an ancestor that came out of Africa.

In 1964, independent German researchers, Breiting and Sickenberg, tried to dismiss Dr Poulanos' findings, arguing that the skull was only 50,000 years old and was actually an ancestor that came from Africa. Research published in the US in 1971 in the popular magazine, *Archaeology*, backed up the findings that the skull was indeed 700,000 years old, based on an analysis of the cave's stratigraphy and the sediment in which the skull was embedded.

Today, most academics who have analyzed the Petralona remains say that the cranium of the *Archanthropus* of Petralona belongs to an archaic hominid different from both *Homo erectus*, classic Neanderthals, and anatomically modern humans, but showing characteristics of all those species and presenting strong European traits. This skull is either *Homo sapiens* or part *Homo sapiens* and, as such, is in direct conflict with the Out of Africa theory. Dr Poulanos believes it suggests an independent evolution of *Homo sapiens* in Europe.

As mainstream interpretations go, further excavations in the Petralona cave with the participation of 46 international researchers have provided additional support for Dr Poulanos' position. The body of finds made accurate dating possible and also suggest a continuous presence of stone and bone tool technology in the cave.

The whole picture is being thought of as the *Archanthropus* evolutionary stage ranging from 750,000–550,000-years old sediment layers within the cave.

### Scientific dating trumped by politically-driven theories

In 1983, the Greek government ordered that all excavations at the Petralona site must stop and research was forbidden to everybody, including the original archaeological team. The Anthropological Society of Greece took the case to court, and 15 years later Dr Poulanos was again allowed access to the cave.

But not for long.

In 2012, Dr Poulanos and his team of senior archaeologists and geologists were again denied further access to the cave and his research data were suppressed. His findings contradicted conventional views regarding human evolution, so the Greek government just changed the dating to a more comfortable official number of 300,000 years.

In September 2012 Nicholas Mascie-Taylor, Professor of Biological Anthropology at the University of Cambridge, sent a letter to the Ministry of Culture in Greece, on behalf of the European Anthropological Association, saying that the correct date of the skull is 700,000 years and not 300,000 years. He has also challenged the government's suppression of information regarding this important discovery.

The participants in this saga see this politically-driven suppression of knowledge as yet another proof of fear of the unknown among mainstream scientists. The most important conclusion of Dr Poulanos' research is the co-existence of all main anthropological

types—African (Kobi), Asian (Beijing), and European (Petralona)—at almost the same time period in prehistory (700,000, 500,000 and 750,000 respectively).

These twists and turns in Dr Poulanos work have driven him to continue his research in secret, and places him in today's growing category of disobedient, "underground archaeologists."

... To be continued

VESNA TENODI is an archaeologist, artist, and writer based in Sydney, Australia. She received her Master's Degree in Archaeology from the University of Zagreb, Croatia. She also has a diploma in Fine Arts from the School of Applied Arts in Zagreb. Her Degree Thesis was focused on the spirituality of Neolithic man in Central Europe as evidenced in iconography and symbols in prehistoric cave art and pottery. After migrating to Sydney, she worked for 25 years for the Australian Government, and ran her own business. Today she is an independent researcher and spiritual archaeologist, concentrating on the origins and meaning of pre-Aboriginal Australian rock art. In the process, she is developing a theory of the Pre-Aboriginal races which she has called the Rajanes and Abrajanes. In 2009, Tenodi established the DreamRaiser project, with a group of artists who explore iconography and ideas contained in ancient art and mythology.

Website: [www.modrogorje.com](http://www.modrogorje.com)

E-mail: [ves@theplanet.net.au](mailto:ves@theplanet.net.au)

All of Tenodi's articles published in *Pleistocene Coalition News* can be found at the following link:

[http://pleistocenecoalition.com/#vesna\\_tenodi](http://pleistocenecoalition.com/#vesna_tenodi)



## The Pleistocene Coalition

Prehistory is about to change

- Learn the real story of our Palaeolithic ancestors—a cosmopolitan story about intelligent and innovative people—a story which is unlike that promoted by mainstream science.
- Explore and regain confidence in your own ability to think for yourself regarding human ancestry as a broader range of evidence becomes available to you.
- Join a community not afraid to challenge the status quo. Question with confidence any paradigm promoted as "scientific" that depends upon withholding conflicting evidence from the public in order to appear unchallenged.

**PLEISTOCENE COALITION  
NEWS**, Vol. 7: Issue 6  
(November-December)

© Copyright 2015

### PUBLICATION DETAILS

EDITOR-IN-CHIEF/LAYOUT  
[John Feliks](#)

COPY EDITORS/PROOFS  
[Virginia Steen-McIntyre](#)  
[Tom Baldwin](#)  
[David Campbell](#)

SPECIALTY EDITORS  
James B. Harrod, Rick Dullum,  
Matt Gatton

ADVISORY BOARD  
[Virginia Steen-McIntyre](#)

### CONTRIBUTORS to this ISSUE

Marilyn Jesmain

Chris Hardaker

Ray Urbaniak

Kevin Lynch

Richard Dullum

Vesna Tenodi

Michael Winkler

Sachin Tiwary

Virginia Steen-McIntyre

John Feliks

**Pleistocene Coalition  
News is produced by the  
[Pleistocene Coalition](#)  
bi-monthly  
since October 2009.  
Back issues can be found  
near the bottom of the  
PC home page.**

To learn more about early  
man in the Pleistocene visit  
our newly redesigned  
website at

[pleistocenecoalition.com](http://pleistocenecoalition.com)

The Pleistocene Coalition is now  
entering its seventh year of chal-  
lenging mainstream scientific  
dogma. If you would like to join  
the coalition please write  
to the editors.